

Township Lines 330 Al. 54. 6th 30. 3rd
 Correction - 12 - 12 -

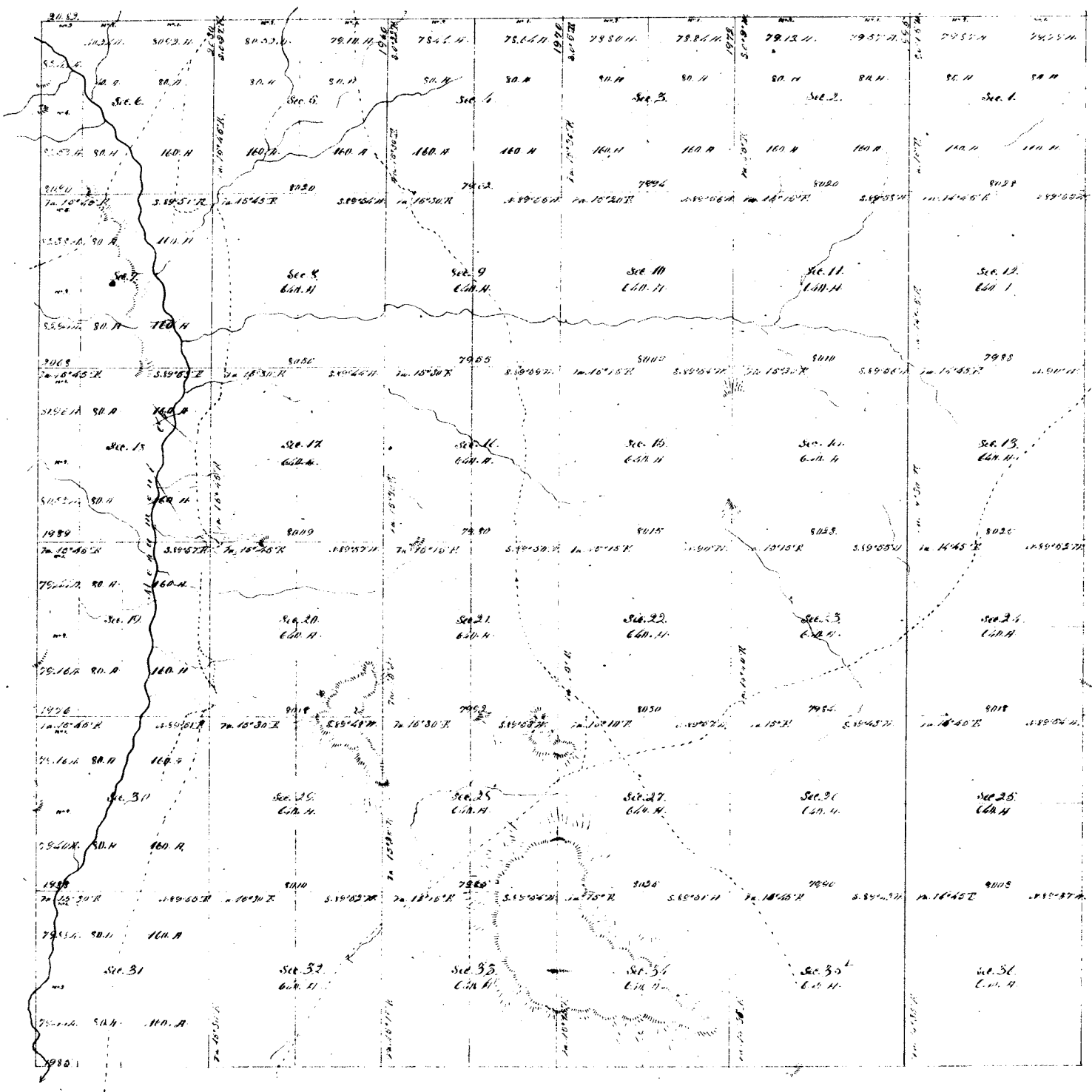
I do hereby certify that the above diagram of the exterior
 lines of Townships 67 69, 10 11, 12 & 13, South in Ranges 65, 66, 67 68
 and 69, West of the sixth Principal Meridian, as surveyed by
 Albinus K. Sheldon under contract of Oct 20th 1864, is in strict
 conformity with the approved field notes on file in this Office

Done at St. Paul, 26th 1865

J. M. Smith
 Surveyor General

13 66
T. XIII. S. R. LXVI. W.

BOOK 5



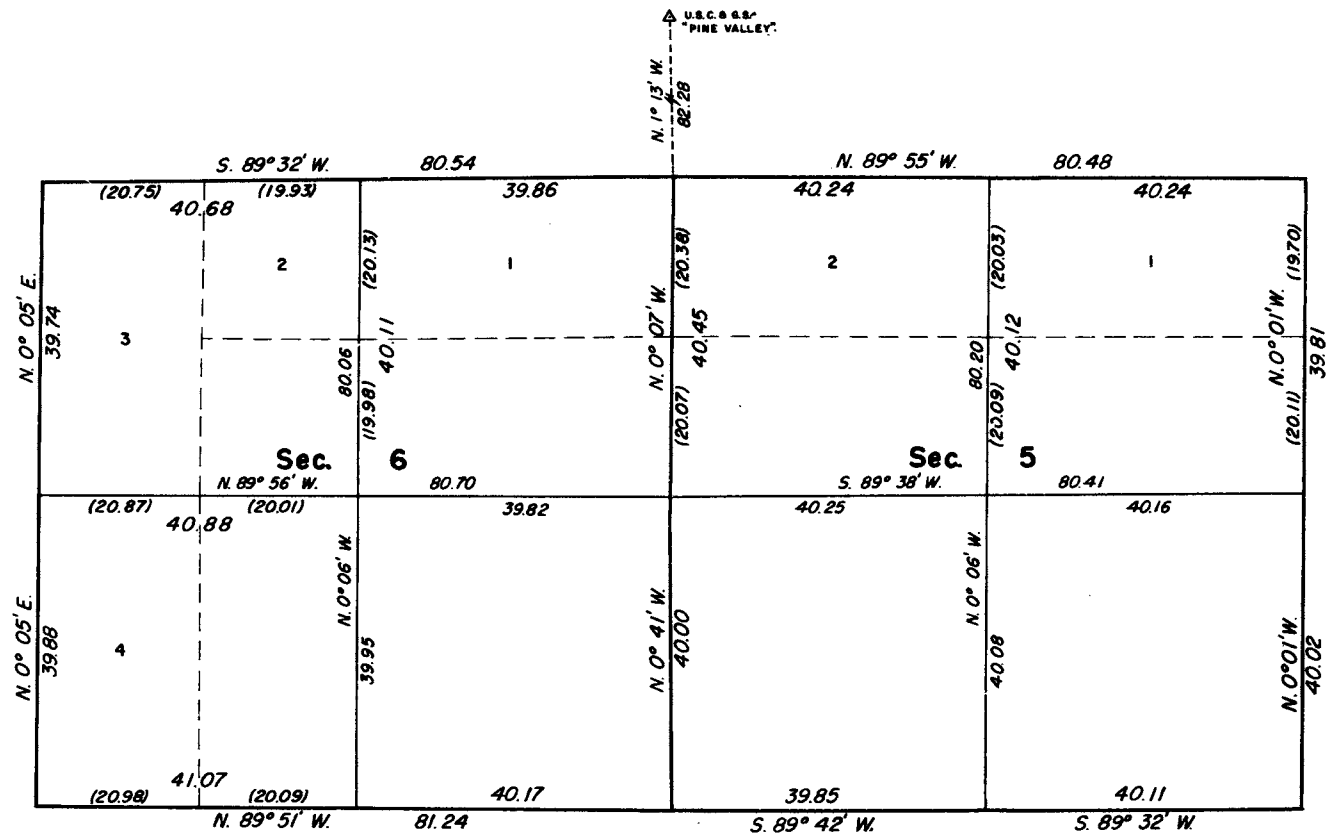
Surveys Reorganized	By whom Reorganized	Date or Command	Number of Surveys	When Reorganized
Township 13 North	William H. Smith	Oct. 30 th 1861	11	May 1869
Subdivision	W. H. Smith	July 2 nd 1861	60	Aug 1866

The above Map of Township 13 North, Range 66 West of the north principal meridian in Colorado is strictly conformable to the field notes of the survey, survey on file in this Office which have been examined and approved.
 Surveyor General's Office
 Denver, Sept 2 1866 J. B. Pierce

Sur. Gen.

TOWNSHIP 13 SOUTH, RANGE 66 WEST OF THE SIXTH PRINCIPAL MERIDIAN, COLORADO

DEPENDENT RESURVEY



This plat represents a retracement and reestablishment of the boundaries of sections 5 and 6, designed to restore the corners in their true original locations according to the best available evidence; and, the subdivision of sections 5 and 6, T. 13 S., R. 66 W., Sixth Principal Meridian, Colorado. Lottings and areas are as shown on the original plat approved September 14, 1866.

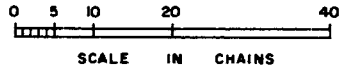
The resurveys were executed by Leonard W. Murphy, Cadastral Surveyor, April 4 to May 17, 1966, under Special Instructions for Group No. 532, Colorado, dated March 23, 1966.

UNITED STATES DEPARTMENT OF THE INTERIOR
BUREAU OF LAND MANAGEMENT
Washington, D. C. June 13, 1966

This plat is strictly conformable to the approved field notes, and the survey, having been correctly executed in accordance with the requirements of law and the regulations of this Bureau, is hereby accepted.

For the Director

E. J. Lemington
Chief, Division of Engineering



Area resurveyed: 1,287.74 Acres

BUREAU OF LAND MANAGEMENT

COLORADO

RECTANGULAR SURVEY INDEX

PRINTED: 02/24/76

BOUNDARY	TOWNSHIP 13 VOLUME	SOUTH		RANGE 66		WEST		TYPE CONTRACT	ISSUED OR	-SIXTH PRIN MER		SURVEYOR OR REMARKS	
		INTROUCTION		SURVEY	CERTIFICATE	OR GROUP	APPROVED			YEAR	APPROVED		
		FROM	TO	FROM	TO	FROM	TO						
NORTH	RD	241	242	294	294	326	332	ORG		05/31/1862	1862	07/09/1862	W PIERCE
NORTH	RL	89	89	93	97	246	251	ORG		10/20/1864	1865	09/26/1865	A L SHELTON
NORTH	RL	89	89	98	98	246	251	RES		10/20/1864	1865	09/26/1865	A L SHELTON
NORTH	RO487	153	155	156	160	167	168	RES	532	04/01/1966	1966	06/08/1966	L MURPHY
SOUTH	RD	241	242	287	287	326	332	ORG		05/31/1862	1862	07/09/1862	W PIERCE
SOUTH	RD	241	242	313	319	326	332	ORG		05/31/1862	1862	07/09/1862	W PIERCE
SOUTH	RC	160	162	167	167	195	198	RES		07/01/1863	1863	10/08/1863	A SHELTON
SOUTH	RC	160	162	172	172	195	198	RES		07/01/1863	1863	10/08/1863	A SHELTON
SOUTH	RC	160	162	177	177	195	198	RES		07/01/1863	1863	10/08/1863	A SHELTON
SOUTH	RC	160	162	183	183	195	198	RES		07/01/1863	1863	10/08/1863	A SHELTON
SOUTH	RC	160	162	193	193	195	198	RES		07/01/1863	1863	10/08/1863	A SHELTON
SOUTH	RL	89	89	91	91	246	251	RES		10/20/1864	1865	09/26/1865	A L SHELTON
EAST	RD	241	242	287	287	326	332	ORG		05/31/1862	1862	07/09/1862	W PIERCE
EAST	RD	241	242	291	294	326	332	ORG		05/31/1862	1862	07/09/1862	W PIERCE
EAST	RL	89	89	98	98	246	251	RES		10/20/1864	1865	09/26/1865	A L SHELTON
EAST	RU	168	170	174	175	317	320	RES		05/25/1866	1866	09/14/1866	W ASHLEY
WEST	RC	241	242	313	313	326	332	ORG		05/31/1862	1862	07/09/1862	W PIERCE
WEST	RL	89	89	91	94	246	251	ORG		10/20/1864	1865	09/26/1865	A L SHELTON
WEST	RO487	153	155	156	157	167	168	RES	532	04/01/1966	1966	06/08/1966	L MURPHY
SUBDIVISION	RU	168	170	171	215	317	320	ORG		05/25/1866	1866	09/14/1866	W ASHLEY
SUBDIVISION	RO487	153	155	160	165	167	168	RES	532	04/01/1966	1966	06/08/1966	L MURPHY
SUBDIVISION	RO487	153	155	165	166	167	168	ORG	532	04/01/1966	1966	06/08/1966	L MURPHY

145
240

9

241

Field notes

*of
the surveys of the Eastern
Lines of townships 13. 14. 15.
16. 17. 18. 19 and 20 South of
Range 65 West and townships
14 and 15 South of Range 66
West of the Sixth Principal
Meridian*

Names and duties of
the Survey Party

Wm H. Pierce } Compassman

George A. Billings }
Arlington O. Ashley } Chairman

Caleb S. Bernal }
Duncan Campbell } Cornerman

Redwood Fisher } Flagman

W. B. 20 S. 65 W.

Commenced at the South West
corner of township 20 South of
Range 65 West of the Sixth
Principal meridian and ran
South on a true line

15.80 Road Course East
28.20 Edge of bluff 30 feet high
40.00 Set a cottonwood post with
mound and chained stake for $\frac{1}{4}$ sec. cor.

73. Right bank of the Arkansas R.
75.80 Left bank of the Arkansas River
June 15th 1862

80. Set cottonwood post with mound
and chained stake for corner to
sections 23, 30, 31 and 36

Sections 31 and 36 lie principally
in the valley of the Arkansas R.
Land 9th rate
Variation 14° East

From this corner 5 chains West
is a conical hill 70 or 80 ft
high

East Bdry of 14 S. R. 66 W -

- 72.00 Dry shallow gully Course West
 80.00 Set a cottonwood post with mound and charred stake for corner to sections 13, 14, 19 & 24
 Soil good Surface slightly rolling
 Band 2nd rate
- 41.00 Set a cottonwood post with mound and charred stake for $\frac{1}{4}$ sec. corner
- 80.00 Set a cottonwood post with mound and charred stake for corner to sec. 7, 12, 13 & 18
 Nearly level Soil good
 Band 2nd rate
 Thence north - Va. 15° 15' East
- 20.00 Road Course South 30° West
- 40.00 Set a cottonwood post with mound and charred stake for $\frac{1}{4}$ sec. corner
- 70.00 About 12 chains West is the beginning of a range of

East Bdry of 14 S. R. 66 W -

- sandstone buttes extending toward the north with a few pines and oaks growing on them
80. Set a cottonwood post with mound and charred stake for corner to sections 1, 6, 7 and 12
 Thence north - Va. 15° 15' East
35. Wide, dry, sandy creek bed General course South 30° West.
 Found water by digging 2 ft
38. North bank of creek 3 ft. high
40. Set cottonwood post with mound and charred stake for $\frac{1}{4}$ sec. corner
42. Road Course South West
80. Set cottonwood post with mound and charred stake for the south West corner of Township 14 S. Range 63 West Good grass
 Band 2nd rate
- X
 From this corner run East on a sandstone line

- 8000 Set cottonwood post with mound and charred stake for corner to sect 31, 32 & 33
Rolling prairie good grass
Land 2nd rate
June 24th 1862
- 7.60 Road to Denver Course at 20° E.
- 4500 Set cottonwood post with mound and charred stake for 1/4 section corner
- 8000 Set cottonwood post with mound and charred stake for corner to sections 4, 5, 32 and 33
Open rolling prairie good grass
Land 2nd rate
- 4000 Set cottonwood post with mound and charred stake for 1/4 sec. corner
- 8000 Set a cottonwood post with mound and charred stake

- for corner to sections 30, 31 and 32
Surface rolling Soil sandy
Grass good Land 2nd rate
40. Set a cottonwood post with mound and charred stake for 1/4 sec. corner
- 6360 Center of a wide dry sandy creek bed
- 68.50 Road Course South 30° West
- 81.60 North West corner of township 14 South Range 65 West of the Sixth Principal Meridian
- This is a first rate grazing township. Grass excellent throughout nearly the whole of it while Jimmy's Creek running nearly through its center would furnish water sufficient for large herds of cattle

W. Bdy. Tp. 13 S R. 65 W

From the North West corner
of township 14 South Range
65 West ran North on a true line
Tension 15° 7' East

- 4500 Set cottonwood post with
mound and charred stake
for $\frac{1}{4}$ sec. corner
- 8000 Set a cottonwood post with
mound and charred stake
for corner to sections 25, 30,
31 and 36. Open prairie slo-
ping East Grass good
Land 2nd rate
- 4000 Set a cottonwood post with
mound and charred stake
for $\frac{1}{4}$ section corner
- 8000 Set cottonwood post with
mound and charred stake for
corner to sect. 19, 24, 25 & 30
Rolling Prairie Grass good
Land 2nd rate

20. Top of ridge course North 10° West
40 Set cottonwood post with mound
and charred stake for $\frac{1}{4}$ sec. cor.
Corner near top of ridge on Eastern
slope
- 7350 Prairie Course East Water 50
links East of line
80. Set cottonwood post with
mound and charred stake for
corner to sections 13, 18, 19 and 24
Soil somewhat gravelly. Surface
more broken. Land 2nd rate
40. Set cottonwood post with mound
and charred stake for $\frac{1}{4}$ section cor.
- 3930 Road from Colorado Corner N. E.
80. Set cottonwood post with mound
and charred stake for corner
to sections 7, 12, 13 and 18
Rolling Prairie Grass and
still good
Land 2nd rate

40.00 Set cottonwood post with mound and charred stake for 1/4 sec. corner

80.00 Set cottonwood post with mound and charred stake for corner to sections 16, 7 & 12

Open prairie Grass good
Land 2nd rate

40.00 Set cottonwood post with mound and charred stake for 1/4 sec. corner

43.00 Dig gully Corner about 70° West

49.00 Center of a deep gully
Bank 20 to 30 ft high
Running water Corner S. & W.

80.00 Set cottonwood post with mound and charred stake for the north West corner of township 13 South Range 63 West One mile S.W. to pin woods

Land 2nd rate

From this corner run East on a random line

481.38 Crossed the Eighth Guide Meridian 1.08 chains South of the North East corner of township 13 South Range 63 West from which corner run West on a true line

40. Set cottonwood post with mound and charred stake for 1/4 sec. cor. Pool of rain water near this corner

80. Set cottonwood post with mound and charred stake for corner to sections 1, 2, 35 and 36

Rolling prairie Land 2nd rate

40. Set cottonwood post with mound and charred stake for 1/4 sec. cor.

45.40 Road from Denver to Pueblo. Corner South 10° West

30.00 3 chains East by cabin
 40.00 Set a cottonwood stake with mound and charred stake for 1/4 sec. corner
 80.00 Set cottonwood post with mound and charred stake for corner to sections 1, 6, 7 & 12 Valley of Monument Creek Land 1st rate
 4.00 Monument Creek course South 20° East
 3.00 Monument Creek course S 15 W
 40.00 Set cottonwood post with mound and charred stake for 1/4 sec. corner
 80.00 Set cottonwood post with mound and charred stake for the North West corner of township 14 South Range 66 West Variation 15° 30'

North boundary of 14 S R 66 W

Land 1st rate
 This corner is 2 miles North West of Colorado City
 June 27th 1862

X
 From the NW. cor. of 1/4 14 S R 66 W, S
 a random line

479.83 Crossed the West line of township 14 South Range 63 West 15 links North of the North West corner of said township and from this corner ran West on a true line

40. Set cottonwood post with mound and charred stake for 1/4 sec. cor.
 80. Set cottonwood post with mound and charred stake for corner to sections 1, 2, 35 and 36 Land 2nd rate

40. Set cottonwood post with mound and charred stake for 1/4 sec. cor.

5.300 Top of high sandstone
butte 10 chains long
Extending from South West
to about East Few pines
and dwarf oaks

62.83 Base of butte

8000 Set a cottonwood post
with mound and chained
stake for corner to sections
2.3. 34 and 35

Land 2nd rate

X
4000 Set cottonwood post with
mound and chained
stake for $\frac{1}{4}$ sec corner

8000 Set cottonwood post
with mound and chained
stake for corner to
sections 3.4, 33 and 34
Slightly rolling prairie
Good grass

Land 2nd rate

40. Set cottonwood post with mound
and chained stake for $\frac{1}{4}$ sec. cor.

80. Set cottonwood post with
mound and chained stake
for corner to sections 4.3;
32 and 33. Prairie gently
rising towards the East
Land 2nd rate

40. Set cottonwood post with mound
and chained stake for $\frac{1}{4}$ sec. cor.

46 Road from Colorado City to
the Cherry Creek road from
Denver to Pueblo Course
North East

80. Set cottonwood post with
mound and chained stake
for corner to sections 3.6
31 and 32. Surface still
slightly sloping towards
the West

Land 2nd rate

- 40.00 Set cottonwood post with
mound and charred
stake for $\frac{1}{4}$ sec. corner
- 46.00 Old road course South
- 60.00 Valley of Monument
Creek
- 70.30 Monument Creek 23
links wide course
South 10° West
- 79.85 North West corner of
township 14 South of
Range 66 West
Variation $13^{\circ}30'$ East
June 29th 1862
Township 14 South
Range 66 West is as
good a township of
land as any in the
country. The valley of
the Fontaine qui bouit
Cheyenne and Monument
creek are of the best

arable land and the divide
on the North of the Fontaine
qui bouit is the best
grazing land in the country.
The township is well
settled and the valleys are
all under cultivation.

The great divide between
the Fontaine qui bouit
and the Arkansas on the
South and the Platte and
Cherry Creek on the North
is all good grazing land.
Rain falls in abundance
and the land will produce
wheat oats barley and all
small grains —
Between the Fontaine qui
bouit and the Arkansas
the land is poor consisting
of the debris of limestone

and is destitute of rain
though near the
mountains the grass
is good

1857

12

5006
326

We hereby certify that we have
 assisted John & William A.
 Pierce Deputy Surveyors in sur-
 veying the Extension South of the
 Eighth Guide Meridian west from
 the Third to the Fourth Corner
 Line South. Thirty miles. The fourth
 Standard Parallel South from the
 Eighth Guide Meridian West Thirty
 four miles. and the exterior
 lines of Townships 13. 14. 15. 16. 17. 18.
 19. & 20 South of Range 65 West
 and Townships 14 & 15 South of
 Range 66 West of 6th Principal
 Meridian. And that Standard
 and Township lines have been
 in all respects to the best of
 our knowledge & belief well and
 faithfully surveyed and the
 boundary monuments placed ac-
 cording to the instructions furnished
 by the Survey General

notes of such survey

John Pico & Deputy
Wm. Pico Surveyors

Subscribed by the said John
and William Pico
and sworn to before me
a Notary Public for Apache
County in the Territory of Arizona
this 9th day of July 1862
Edw. Ardley
Notary Public
for Apache Co. Ariz.

Surveyor General's Office at
Denver City Co. T. July 9. 1862

The foregoing file notes of the
Survey of the 8th Guide Meridian
between the 3rd & 4th Standard Parallels
South. The 14th Standard Parallel
west from the 8th Guide Meridian
24 miles and the Extension lines
of Tps 13. 14. 15. 16. 17. 18. 19 & 20 South
of Range 65 west. and Tps 14 & 15
South of Range 66 West of 6th
Prim. Meridian as Executed by
John & William Pico under
their contract of May 31st 1862
In the months of June & July
1862 having been critically exam-
ined the necessary Corrections and
Explanations under the said field
notes and also being they contain
an hereby approved

Francis M. Case
Surveyor General

Index to Dines

W. N. line of I. S. R. 66 W.	Page	1612
do 4	"	15-22
do 3	"	23-31
do 2 "	"	35-43
W. N. line 1	"	44-47
W. N. " 5 " 68 W.	"	66-75
do 5 " " 69 "	"	76-84
do 4 . . . 68 "	"	86-95
do 4 " " 69 "	"	98-105
do 3 . . . 68 "	"	106-114
do 3 . . . 69 "	"	115-127
do 2 " " 68 "	"	128-137
W. line 1 " " 68 "	"	138-148
W. & N. line. 5 S. R. 65 "	"	155-161
do 4 S. R. 65 "	"	161-166
do 3 " " 65 "	"	166-170
do 2 " " 65 "	"	171-174
W. line 1 " " 65 "	"	177-178
N. & W. line 1 N. " 65 "	"	178-183
do 2 " " 65 "	"	184-188
do 3 " " 65 "	"	189-193

Index to Dines

W. N. line I. S. R. 67 W. E	193-199
do 4 " " 67 " "	199-205
do 3 " " 67 " "	205-210
do 2 " " 67 " "	210-216
W. line 4 " " 67 " "	216-221
W. & N. lines 20 S. " 65 W. "	242-249
do 19 " " 65 " "	250-255
do 18 " " 65 " "	256-262
do 17 " " 65 " "	263-269
W. line 16 " " 65 " "	274-277
W. & N. lines 15 " " 65 " "	278-284
do 14 " " 65 " "	285-291
do 13 " " 65 " "	292-298
do 15 " " 66 " "	299-304
do 14 " " 66 " "	310-319

4-874

Township 14 S.

R. 66 W.

6	193	5	183	4	177	3	172	2	167	1
192	191	182	177	172	167					
7	191	8	182	9	176	10	171	11	166	12
190	190	181	176	171	166					
18	189	17	181	16	175	15	171	14	165	13
189	188	180	175	170	165					
19	187	20	180	21	175	22	170	23	164	24
186	186	180	174	169	164					
30	185	20	179	28	174	27	169	26	163	25
184	184	178	173	168	163					
31	183	32	178	33	173	34	168	35	163	30

28706-07

Field-Notes
of the
Survey
of the
Subdivision lines
of
Township 14 South, Range 66 West
of the 6th Principal Meridian in the
Territory of Colorado
by
Albinus Z. Sheldon
Deputy Surveyor, under his Contract
bearing date the 1st day of July 1863.

Survey commenced Aug 20th 1863
and completed Aug. 26th 1863

Names

Of assistants employed in the
Survey of the following Township.

Robert Finley }
Charles Auckinole } Chainmen
George W. Smith }
Henry S. Clark } Mound-builders
Benajah Stubbs, Flagman.

Field-Notes of the Survey of the Subdivision
lines in Township 14 South, Range 66 West
of the 6th Principal Meridian, Colorado Territory.
Chains

North between Sections 25 and 26,

Variation $15^{\circ}20'$ East,

40.00 Drive Chandel stake and set post in mound, with
Trench, as per instructions, for qur. Sec. Corner.

80.00 Drive Chandel stake and set post in mound, with
Trench, as per instructions, for Corner to Sec-
tions 25, 26, 25, 26.

Land greatly rolling prairie; Soil 2nd rate.

East on a random line between Sections 25 and 26

Variation $11^{\circ}30'$ East

40.00 Set Temporary quarter Section Corner.

80.20 Intersect East Boundary line of Township 26
South of post, Corner to Sections 25 and 26, from
which corner I run

West on a true line between Sections 25 and 26

Variation $11^{\circ}46'$ East,

40.10 Drive Chandel stake and set post in mound, with
Trench, as per instructions, for qur. Section Corner,

80.20 To Corner to Sections 25, 26, 25, 26.

Land greatly rolling prairie; Soil 1st rate.

North between Sections 25 and 26.

Variation $15^{\circ}20'$ East,

Subdivision of Township 12 S. R. 66 W. of the 6th Principal Meridian,
in
Colorado Territory.

Chains

as per instructions, for corner to Sections 11, 12, 13, 14.
Land rolling; good grazing.

East on a random line between Sections 12 and 13,
Variation 11° 13' East,

4.00 Set temporary quarter Section Corner,

21.40 Dry Run, 350 links wide, flows S. E.

73.20 Saw Mill road, bears North and South,

80.00 Intersect East Boundary of Township 1 1/2 links North of
post, corner to Sections 12 and 13, from which corner I run,

West on a true line between Sections 12 and 13,
Variation 11° 07' East,

4.00 Drive channel stakes and set post in mound, with
with trench, as per instructions, for quarter Section Corner,

80.00 To Corner to Sections 11, 12, 13, 14.

Land rolling prairie, good soil.

North between Sections 11 and 12,

Variation 13° 00' East,

4.00 Drive channel stakes and set post in mound,
with trench, as per instructions, for qtr. Sec. Cor.

80.00 Drive channel stakes and set post in mound, with
trench, as per instructions, for corner to Sections 1, 2, 11, 12.

Land level with rich soil.

167
Township 14 S. R. 66 W. of the 6th Principal Meridian,
in
Colorado Territory.

Chains

East on a random line between Sections 1 and 12,
Variation 11° 13' East,

40.00 Set post for temporary quarter Section Corner,

61.00 Dry Run, 200 links wide, bears South,

79.85 Intersect East Boundary of Township at post, corner to
Sections 1 and 12, from which corner I run,

West on a true line between Sections 1 and 12,
Variation 11° 13' East,

39.92 Drive channel stakes and set post in mound, with trench,
as per instructions, for quarter Section Corner,

79.85 To Corner to Sections 1, 2, 11, 12.

Land greatly rolling; good soil.

North on a random line between Sections 1 and 2,
Variation 13° 00' East,

20.00 Sandstone ledge, bears N. E. and S. W.

25.00 To top of hill, 100 feet high, bears N. E. and S. W.

40.00 Set temporary quarter Section Corner,

58.00 Sandstone ledge, bears N. E. and S. W.

60.00 Top of Sandstone ledge, 20 ft high, bears N. E. and S. W.

74.80 Intersect North Boundary of Township 5 links West of
of post, corner to Sections 1 and 2, from which corner I run

South on a true line between Sections 1 and 2

172
Township 14th S. R. 66 W. of the 6th Principal Meridian,
in
Colorado Territory

Chains

8000 Run channel stakes and set post in mound, with tunnel
as per instructions, for corner to Sections 2, 3, 10, 11.
Land rolling, rich soil; grass abundant.

East on a random line between Sections 2 and 11

Variation 14° 37' East.

4000 Set temporary quarter section corner,

8057 Intersect N.W. line 21 links south of post, corner to
Sections 1, 2, 11, 12, from which corner & run

West on a true line between Sections 2 and 11

Variation 15° 00' East

4020 Run channel stakes and set post in mound, with
tunnel, as per instructions, for quarter section corner,

8057 To corner to Sections 2, 3, 10, 11.

Land rolling, good soil; grass abundant.

North on a random line between Sections 2 and 3.

Variation 14° 57' East.

4000 Set post for temporary quarter section corner,

7446 Intersect North Boundary of Township 76 links West
of post, corner to Sections 2 and 3, from which corner & run
South on a true line between Sections 2 and 3

Variation 14° 18' East,

8040 Run channel stakes and set post in mound, with tunnel,

173
Township 14th S. R. 66 W. of the 6th Principal Meridian,
in
Colorado Territory

Chains

as per instructions, for quarter section corner,

7446 To corner to Sections 2, 3, 10, 11.

Land rolling; good soil; grass abundant

X

Aug. 21st 1863

North between Sections 33 and 34,

Variation 13° 00' East

290 Colorado and Pueblo road, bears N.W. 48° E.

1000 Enter Dry Run, bears S. 70° W.

3650 Leave Dry Run, bears from east to south,

4000 Run channel stakes and set post in mound, with
tunnel, as per instructions, for quarter section corner,

8000 Run channel stakes and set post in mound, with tunnel,
as per instructions, for corner to sections 27, 28, 33, 34.

Land rolling; soil 2nd rate

East on a random line between Sections 27 and 34

Variation 13° 00' East,

4000 Set temporary quarter section corner,

6000 Dry Run 200 links wide, bears south

8000 Intersect N.W. line 40 links south of post, corner to
Sections 26, 27, 34, 35, from which corner & run

West on a true line between Sections 27 and 34,

Variation 13° 17' East.

116 Township 14 S. R. 66 W. of the 6th Principal Meridian,

in
Colorado Territory.

Chains

Trench, as per instructions, for quarter Section Corner

80.00 Drive channel stake and set post in mound, with

Trench, as per instructions, for corner to sections 9, 10, 15, 16.

Land rolling; prairie, good soil.

East on random line between sections 10 and 15

Variation 14° 57' East,

44.00 Set temporary quarter section corner,

79.60 Intersect N. & S. line 12 links North of post, corner

to sections 10, 11, 14, 15, from which corner I run

West on a true line between sections 10 and 15-

Variation 14° 46' East

39.80 Drive channel stake and set post in mound, with

Trench, as per instructions, for quarter Sec. Corner,

79.60 To corner to sections 9, 10, 15, 16.

Land rolling; good soil.

North between sections 9 and 10,

Variation 14° 37' East

44.00 Drive channel stake and set post in mound, with

Trench, as per instructions, for quarter section corner,

80.00 Drive channel stake and set post in mound, with

Trench, as per instructions, for corner to sections 3, 4, 9, 10.

Land rolling; good soil.

117 Township 14 S. R. 66 W. of the 6th Principal Meridian,

in
Colorado Territory.

Chains

East on a random line between sections 3 and 10

Variation 14° 37' East,

44.00 Set post for temporary quarter section corner,

79.55 Intersect N. & S. line 9 links South of post, corner to

sections 3, 4, 9, 10, from which corner I run,

West on a true line between sections 3 and 10,

Variation 14° 55' East,

39.77 Drive channel stake and set post in mound, with

Trench, as per instructions, for quarter section corner

79.55 To corner to sections 3, 4, 9, 10.

Land rolling; good soil.

North between sections 3 and 4, random line,

Variation 14° 37' East,

44.00 Set temporary quarter section corner,

74.28 Intersect North Boundary of Township 74 links West

of post, corner to sections 3 and 4, from which corner I run

South on a true line between sections 3 and 4,

Variation 14° 19' East,

34.28 Drive channel stake and set post in mound, with

Trench, as per instructions, for quarter section corner,

74.28 To corner to sections 3, 4, 9, 10.

Aug. 22nd 1868

Township 14 S. R. 66 W. of the 6th Principal Meridian
in
Colorado Territory.

Chains

Variation 15° 46' East,

39.67 Drive channel stake and set post in mound, with
trench, as per instructions, for quarter Section Corner,
79.35 To Corner to Sections 8, 9, 16, 17.

Land gently rolling; good soil.

North between Sections 8 and 9,

Variation 14° 57' East

40.00 Drive channel stake and set post in mound, with trench,
as per instructions, for quarter Section Corner.

8.00 Drive channel stake and set post in mound, with
trench, as per instructions, for Corner to Sections 4, 5, 8, 9.

Land rolling; good soil.

East on a random line between Sections 4 and 9,

Variation 16° 08' East

40.00 Set temporary quarter Section Corner,

79.46 Intersect N. 48. line at post corner to Sections 3, 4,
9, 10, from which I run

West on a true line between Sections 4 and 9,

Variation 16° 08' East

39.73 Drive channel stake and set post in mound, with
trench, as per instructions, for quarter Section Corner,

79.46 To Corner to Sections 4, 5, 8, 9.

183
Township 14 S. R. 66 W. of the 6th Principal Meridian,
in
Colorado Territory.

Chains

North on a random line between Sections 4 and 5
Variation 15° 13' East

40.00 Set temporary quarter Section Corner,

74.90 Intersect North Boundary of Township 19 links East
of post, Corner to Sections 4 and 5, from which Corner I run

South on a true line between Sections 4 and 5

W Variation 15° 23' East

34.90 Drive channel stake and set post in mound, with
trench, as per instructions, for quarter Section Corner,

74.90 To Corner to Sections 4, 5, 8, 9.

Land rolling; good soil.

Aug. 24th 1863

North between Sections 31 and 32,

Variation 13° 15' East.

10.00 To Gulch, bears East and West,

34.00 Same Gulch, bears East and West,

40.00 Drive channel stake and set post in mound, with
trench, as per instructions, for quarter Section Corner,

57.00 Ravine, bears East,

68.00 Ravine, bears South East,

78.00 Same bluff, bears East and West,

80.00 Drive channel stake and set post in mound, with

Township 14th R. 66th W. of the 6th Principal Meridian,
in
Colorado Territory.

- chains
- 35.70 Ravine, 20 links wide, bears South
- 40.00 Set post for temporary quarter Section Corner,
- 80.24 Interest post, corner to Sections 4, 5, 8, 9, from
which I run
West on a true line between Sections 3 and 8
Variation $16^{\circ}13'$ East
- 40.12 Drive Chained stake and set post in mound,
with trench, as per instructions, for quarter Sec. Cor.
- 90.24 To Corner to Sections 3, 6, 7, 8.
Land rolling; good soil.
- West on random line between Sections 6 & 7,
Variation $16^{\circ}37'$ East,
- 20.10 Colorado and Saw Mill road, bears $N. 58^{\circ} E.$ and $S 58^{\circ} W.$
- 40.00 Set post for temporary quarter Section Corner,
- 46.10 Monument Creek road, to Bijou. bears $N. E. 40. W.$
- 47.20 Old Monument Creek road, bears $N. 70.$
- 60.80 Beside bluff, 20ft high, bears $N. 40.$
- 63.00 To foot of bluff,
- 73.50 Monument Creek, 50 links wide, flows South,
- 78.40 Interest West Boundary of Township 281
links North of post corner to Sections 6 and 7,
from which corner I run,

Township 14th R. 66th W. of the 6th Principal Meridian, ¹⁹³
in
Colorado Territory.

- chains
- East on a true line between Sections 6 and 7,
Variation $18^{\circ}37'$ East
- 38.40 Drive Chained stake and set post in mound, with
trench, as per instructions, for quarter Sec. Cor.
- 78.40 To Corner to Sections 3, 6, 7, 8.
Land rolling; 2nd rate.
- North on a random between Sections 3 and 6
Variation $13^{\circ}24'$
- 30.08 Colorado and Saw Mill road, bears $N. E. 70. W.$
- 40.00 Set post for temporary quarter Section Cor.
- 40.35 Colorado and Bijou road, bears $N. 30^{\circ} E. 40. 30^{\circ} W.$
- 75.45 Interest North Boundary of Township at post
corner to Sections 3 and 6, from which I run,
South on a true line between Sections 3, 6,
- 35.45 Drive Chained stake and set post in mound, with
trench, as per instructions, for quarter Sec. Cor.
- 75.45 To Corner to Sections 3, 6, 7, 8.
Land level, good rich soil.
- Aug. 26th 1863.
- Pike's Peak bears from the corner to Sections
3rd and 3rd on the Township line, $N. 75^{\circ} 14' W.$
From corner to Sections 2, 3, 10, 11, $S. 86^{\circ} 20' W.$

General Description.

The land in this Township, available for Cultivation, comprises parts of 6 Sections lying adjacent to Fontaine qui Bouit, Cheyenne and Monument Creeks, all of which is occupied by settlers. This land is of good quality and affords profitable returns to the farmer.

The Uplands have, generally, a rich soil but cannot be availed of for tillage until some means are devised to supply them with water. They are however invaluable for grazing and already supply numerous herds of Cattle.

This Township contains no timber of any value. In sections 1 and 2 Sand stone is quite abundant but it is worthless for building purposes.

Along the banks of Sand Creek are several small springs which supply the lands with water.

List of Names.

195

A list of the names of the individuals employed to assist in running, measuring, or marking the lines and corners described in the foregoing field notes of Township 14 South of the base line of Range No. 66 West of the 6th Principal Meridian, in Colorado Territory, showing the respective Capacities in which they acted:

Robert Finley, Chairman,

Charles Auchincloss, Chairman.

George W. Smith, Mound builder.

Henry S. Clark, Mound builder.

Benajah Stubbs, Flagman.

We hereby certify that we assisted Alvin Z. Sheldon, deputy Surveyor, in surveying the subdivision lines of Township No. 14 South of the base line of Range No. 66 West of the 6th Principal Meridian, in Colorado Territory and that said Township has been in all respects, to the best of our knowledge and belief, well and faithfully surveyed, and the boundary monuments planted according to the instructions furnished by the

Surveyor General.

Robert Finley Chairman
Charles A. ...
George W. Smith ...
Henry ...
Benajah P. Stubb's ...

Colorado Territory }
El Paso County } S. Subscribed and sworn
to by the above named persons before
me a Clerk of the District Court for the
Third Judicial District for and in Colorado
Territory this twenty sixth day of September
1863. W. G. Bradford p. Wm. ...

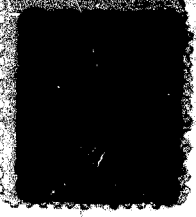
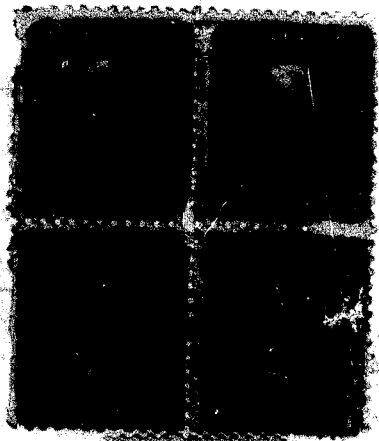
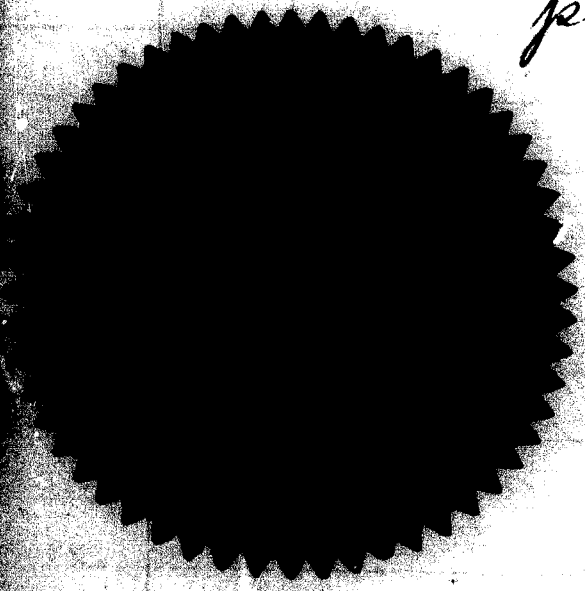
I, Albinus L. Sheldon, Deputy Surveyor
do solemnly swear, that in pursuance of
a contract with John Pierce, Surveyor
of the public lands of the United States in
the Territories of Colorado and Utah bearing
date the 1st day of July 1863. and in strict
conformity to the Laws of the United States
and the instructions furnished by the said
Surveyor General, I have faithfully subdivided
Township N. 14. South of the baseline of
Range N. 66 West of the Sixth principal
meridian in Colorado Territory and do
further solemnly swear that the foregoing
are the true and original field notes
of such Survey.

A. L. Sheldon

Colorado Territory }
El Paso County } S.

Subscribed and sworn
to before me a Clerk of the District
Court of Colorado Territory 3rd Judicial
District this twenty sixth day of Septem
ber

Apr. 1863 Ch. G. Brewster
for Margaret Anne Dyer.



88
and sworn to before me, a
Justice of the Peace for the County
of El Paso in the Territory of Col-
orado, this 8th day of July 1865.

James Roberts
Justice of the Peace

Surveyor General's Office
July 12th 1865 - Denver

The foregoing field notes of the survey
of the exterior lines of the 19th & 20th R. 69
W. & fractional 17 S. of R. 70 W. executed
by Abner S. Sheldon under his con-
tract of 20th Oct. 1864, having been crit-
ically examined the necessary cor-
rections and explanations made to the
said field notes and the surveys they
describe are hereby approved.

Surveyor General of
Colorado et al.

89
Field-Notes

The Survey of the Exterior Lines

Boundaries of
Townships 6, 7, 8, 9, 10, 11 & 12 S.
of Range 65 W.; Townships 6, 7, 8, 9,
10, 11, 12 & 13 S. of R. 66 W.; Townships
6, 7, 8, 9 and Fractional Townships
10, 11, 12 & 13 S. of R. 67 W.; Township
6 and Fractional Townships 7,
8 & 9 S. of R. 68 W.; And Fractional
Townships 6 and 7 S. of R. 69 W.
of the 6th Principal Meridian
in the Territory of
Colorado

by
Abner S. Sheldon
Deputy Surveyor
Under his contracts, dated
October 20th 1864.

Work commenced Dec. 1st
1864 and finished July
28th 1865.

West Boundary S. 13 S. R. 66 W.

6th Principal Meridian

Begin at the mound, the established corner to Townships 13+14 South of Ranges 66 and 67 West and run

North, on a true line, between Sections 26 and 31

Var. 15° 03' E.

4.45 Ditch, 10 ft wide, runs S. E.

4.70 Monument Creek, 60 ft wide, runs S. 75° E.

7.00 Monument Cr. runs S 15° W

16.00 Monument Cr. runs S 20° E.

25.00 Monument Cr. runs S 20° W

40.00 Set 1/4 Sec. Cr. Sandstone 14 x 12 x 8

43.00 Large Madrugrowth trees NE + SW

80.00 Set Cor. to Secs. 25, 26, 30 + 31

Sandstone 16 x 9 x 8

Land broken; good soil.

Timber small Cottonwoods;

Madrugrowth Willow, Alder

Cottonwood, Currant, and plum

North, on a true line, between Secs 25 + 31

Var. 15° 03' E.

West Boundary S. 13 S of R 66 W

6th Principal Meridian

- 0.80 Red Rock Cr. 5 links wide, runs S 80° E.
 15.00 Several springs in this neighborhood.
 35.00 Bluff 10 ft high, bears N 30° E 48 30 W
 40.00 Set 1/4 Sec. Cor. Granite 16 x 10 x 4
 43.00 A second bluff, bears N. W. 48° E.
 48.00 Laughlin Creek, 5 links wide, runs S. E.
 67.00 Bluff bears N 75° W 48 75 E
 80.00 Set Cor. to Secs 24, 25, 19 + 30
 Granite 15 x 10 x 7
 Sand same

North on a true line between Secs 24 + 19
 Var. 15° 03' E.

- 24.00 Sandstone bluff, 15 ft high bears S 80° W
 and North
 40.00 Set 1/4 Sec. Cor. Sandstone 20 x 14 x 3
 49.00 Coal blossom 1 1/2 thick,
 55.00 Center of deep gulch bears S 80° E.
 78.00 Center of Gulch, bears S. 60° E.
 80.00 Set Corner to Section 13, 24, 18 + 19
 Sandstone 30 x 10 x 5
 Sand broken and worthless.
 Timber Pine and spruce of poor quality
 Undergrowth Oak and Hawthorn

West Boundary S. 13 S of R 66 W

6th Principal Meridian

North on a true line between sections 13 + 18
 Var. 15° 03' E

- 39.00 Center of Gulch, bears from S. W. 60° E
 40.00 Set 1/4 Cor. Granite 20 x 14 x 3
 80.00 Set Corner to Sections 12, 13, 7 + 18
 Granite 18 x 14 x 6
 Sand more level, 2nd rate

North on a true line between Secs 7 + 10
 Var. 15° 03' E.

- 32.00 Ravine, runs S. 60° E.
 40.00 Set 1/4 Sec. Cor. Granite 20 x 14 x 3
 35.00 Colorado City and Brown road, bears
 N 60° E 48 25 W. Top of Ridge bears S 60° E
 80.00 Set Corner to Section 6, 7, 1 + 10
 Granite 18 x 14 x 8
 Sand broken, 3rd rate
 Timber Scrubby pines; Under-
 growth Oak & Hawthorn

North on a true line between Secs 1 + 6
 Var 15° 03' E

- 38.75 Center of Gulch, bears E. + W.
 38.00 Top of Ridge, bears E. + W.
 40.00 Set 1/4 Sec. Cor. Granite 20 x 12 x 6

West Boundary of 13 S. of R. 66 W.

6th Principal Meridian

4500 Center of Gulch, bears N 75° E
 5000 Top of Ridge, bears E. & W.
 6770 Monument Cr 30' wide, runs S. E.
 8000 Set Corner to townships 12 and 13
 South of Range 66 and 67 West
 Granite 18 x 10 x 4
 Land mostly broken; 3rd rate
 timber scattering pines and scrub
 oak

May 23rd 1865

North Boundary of 13 S. of R. 66 W.
 From the Established Cor to townships
 12 and 13 South of Range 66 and
 67 West I run
 East on a random line between
 said townships the variation of my
 instrument, being for each mile
 respectively, 15° 03' E, 15° 05', 15° 08', 15° 09',
 14° 36', 14° 36' E. I set temporary
 half-mile and mile stones at 400
 and 800 chains
 I find the Township line to be
 six miles and 82 links and the

North Boundary of 13 S. of R. 66 W.

6th Principal Meridian

falling to be 187 links South of
 the Township Corner.
 The Correction for the true line will
 therefore be 82 links West and
 15.6 links North per mile

From the Corner of Townships
 12 and 13 South of Range 65 and
 66 West I run
 88° 57' W on a true line between
 Sections 1 and 36

Var 14° 36' E.

4000 Set 1/4 Sec. Cor. Granite 18 x 10 x 5
 8000 Set Corner to Sections 35, 36, 1 & 2
 Granite 16 x 10 x 4
 Land rolling prairie 2nd rate

88° 57' W. on a true line between Sec-
 tions 35 and 2

Var 14° 36' E

4000 Set 1/4 Sec. Cor. Granite 18 x 9 x 6
 8000 Set Corner to Sections 34, 35, 3 & 4
 Sandstone 16 x 11 x 4
 Land same

88° 57' W on a true line between

North Boundary of S. of R. 66 W.

6th Principal Meridian

Sections 34 and 3

Var. 15° 03' E

40.00 Set 1/4 Sec. Cor. Sandstone 14 x 12 x 3

80.00 Set Corner to Sections 33, 34, 34

Sandstone 17 x 9 x 4

Land the same

S 89° 54' W on a true line between
33 and 4

Var. 15° 03' E.

40.00 Set 1/4 Sec. Cor. Sandstone 15 x 12 x 3

78.22 Spring branch, 2 links wide, bears S 15° W

80.00 Set Corner to Sections 32, 33, 4 & 5

Sandstone 16 x 8 x 5

Land the same.

S 89° 54' W. on a true line between
Sections 32 and 5

Var. 15° 03' E

10.82 Road, bears S. 30° E.

40.00 Set 1/4 Sec. Cor. Sandstone 16 x 9 x 5

40.17 Ravine, bears South

78.80 Stage Road, bears S 20° W

80.00 Set corner to Sections 31, 32, 5 & 6

Sandstone 16 x 9 x 5

North Boundary of S. of R. 66 W.

6th Principal Meridian

Land the same

S 89° 54' W on a true line between
Sections 31 and 6

Var. 15° 03' E.

26.86 Flum Creek road, bears S 15° E + S 15° W

40.00 Set 1/4 Sec. Cor. Granite 16 x 7 x 7

40.80 Kelle's Creek, 10 links wide bears S 20° E

80.82 To the Township Corner?

Land the same.

General Description

This township has very little land which is available for cultivating a narrow belt margining the West side of Monument Creek. Encircling it all. There are indications of Coal on sections 17, 27, and 30. Iron ore is found on Section 16. The eastern part of the township is excellently adapted to grazing.

West Boundary of R. 65W

6th Principal Meridian

Begin at the mound, the established corner to Townships 16 and 13 S of Ranges 65 and 66 West and run North on a true line between Sections 36 and 31

Var 14° 24' E

24.00 Set 1/4 Sec. Cor. Snow Stone 16x14x4

8.00 Set Corner to Sections 28, 36, 30 & 31

Snow Stone 16x13x4

Sand grain, gently rolling, 2nd rate

North on a true line between Sections 28 & 30

Var. 14° 24' E

24.00 Set 1/4 Sec. Cor. Granite 16x9x5

8.00 Set post in mound as per instrum.

Ties for Cor to Sections 24, 25, 17 & 30

Land the same.

North on a true line between Secs 24 & 17

Var. 14° 24' E

18.00 Enter Timber, bears S.W. and S. 68° E.

24.00 Set 1/4 Sec. Cor. 16x14x4

Pine tree 20 in. in diameter at base East

58.00 Enter Pine, bears N. 60° W. & S. 60° E.

7.00 Enter Timber, bears S.W.

West Boundary of R. 65W

6th Principal Meridian

80.00 Set corner to Sections 18, 19, 13 & 24

Sandstone 18x9x4

Sand rolling 3rd rateTimber fair pine - ~~and~~ ~~regard~~ ~~to~~ ~~be~~ ~~at~~

North, on a true line, between Secs 18 & 19

39.25 Var. 14° 24' E

Kettle's Creek, 10 links wide, runs West

24.00 Set 1/4 Sec. Cor. Sandstone 16x10x6

62.80 Creek, 10 links, wide runs S.W.

66.85 Creek runs S.E.

67.70 " " S. 15° W.

80.00 Set Cor. to Sections 12, 13, 7 & 18

Sandstone 16x9x7

Sand and timber the same

May 24th 1865

North between Sections 12 & 7

Var. 14° 24' E

24.00 Set 1/4 Sec. Cor. Sandstone 16x11x6

80.00 Set Corner to Sections 1, 10, 6 & 7

Sandstone 18x9x5

Sand and timber same

North on a true line between Secs 1 & 6

Var 14° 29' E

List of Names.

A list of the names of the individuals employed to assist in running, measuring, or marking the lines and corners described in the foregoing field notes of Townships 6, 7, 8, 9, 10, 11, & 12 S. of R. 65 W.; Townships 6, 7, 8, 9, 11, 12 & 13 S. of R. 66 W.; Townships 6, 7, 8, 9, and Fractional Townships 10, 11, 12 & 13, S. of R. 67 W.; Townships 6 and Fractional Townships 7, 8 & 9, S. of R. 68 W. and Fractional Townships 6 & 7 S. of R. 69 W. of the 6th Principal Meridian, showing the respective capacities in which they acted.

We hereby certify that we assisted Albinus J. Sheldon, deputy surveyor, in surveying the Exterior boundaries of Townships 6, 7, 8, 9, 10, 11 & 12 S. of R. 65 W.; Townships 6, 7, 8, 9, 10, 11, 12 & 13 S. of R. 66 West; Townships 6, 7, 8 & 9 and Fractional Townships 10, 11, 12 & 13 S. of R. 67 W.; Township 6 and Fractional Townships 7, 8 & 9 S. of R. 68 W. and Fractional Township 6 and 7 S. of R. 69 W. of the 6th Principal Meridian, and that said townships have been in all respects, to the best of our knowledge and belief, well and faithfully surveyed, and the boundary monuments planted according to the instructions furnished by the Surveyor General.

J. Randolph Smith Chairman
 William C. DeFrance Chairman
 Bradley Jackson Flagman

Benjamin S. Sperry
Attorney.

Subscribed and sworn to by
the above named persons,
before me, Deft. County Clerk
7th ~~th~~

for the County of El
Pas. Colorado Territory. this
5th day of Aug AD 1865.
Ernest A. Brown

R. Abner Z. Sheldon, deputy

Surveyor, do solemnly swear,
that, in pursuance of a Contract
with John Pierce, Surveyor of
the Public lands of the United
States in the Territory of Colorado,
bearing date the 20th day of Oc-
tober 1864, and in strict con-
formity to the laws of the United
States and the instructions fur-
nished by the said Surveyor
General, I have faithfully sur-
veyed the Exterior boundaries of
Townships 6, 7, 8, 9, 10, 11 & 12 South
of R. 65 W; Townships 6, 7, 8, 9, 10, 11,
12 and 13 S. of R. 66 W; Townships
6, 7, 8 & 9 and Fractional Townships
10 & 11 S. of R. 67 W; Township 6,
and Fractional Townships 7, 8, & 9
S. of R. 68 W and Fractional
Townships 6 & 7 S. of R. 69 W of the
6th Principal Meridian in the
Country aforesaid, and do further

whenever presented that the foregoing

are the true and original field notes of such survey

Abner Z. Sheldon
Deputy Surveyor.

Subscribed by the said Abner Z. Sheldon, deputy surveyor, and sworn to before me, Deputy County Clerk for the County of Ch. Jones, Colorado Territory this 5th day of August 1865.
Aron R. Brown

Surveyor General Office
Denver Sept 26th 1865

the foregoing field notes of the Survey of the Exterior lines or boundaries of Townships 6.7.8.9.10.11.12. S. of R. 65.11. Township 6.7.8.9.10.11.12. & 13. S. of R. 66.11. Township 6.7.8.9. and fractional Township 10.11.12. & 13. S. R. 67.11. Townships ~~6.7.8.9.~~ fractional Townships 7. 8 & 9. S. of R. 68.11. and fractional Township 6 & 7. S. R. 69.11. of the 6th Principal Meridian in the Territory of Colorado executed by Abner Z. Sheldon under his Contract of the 20th day of October 1864, having been critically Examined the necessary Corrections and Explanations made, the said field notes and the Survey they describe are hereby approved
John Pierce
Surveyor General of Colorado & Utah

Field Notes
of the
Subdivision lines of
Township 13. S.
R. 66 W.

Surveyed by

William Ashley

74 ... 66 W.

the Subdivision
Twp 13. S. R. 66
Principal Mer-
idional Territory.

papers of adjust-
ment for Sub-
division Town-
ship 13. S. R. 66 W.

1866

in a length
of 36.

the 1/4 Sec. cor-
ner of the cor-

ner may
be trusted to
be

subdivision commenced Aug 7th 1866.
and completed Aug 12th 1866.

168-A

L-574

Township 13 South R. 66 W.

6	213	5	200	4	192	3	182	2	177	1
212		211		199		191		184		176
7	210	8	199	9	191	10	183	11	175	12
209		209		198		190		182		174
18	208	17	197	16	190	15	182	14	174	13
207		206		176		189		181		173
19	205	20	196	21	189	22	181	23	173	24
204		204		175		188		180		172
30	203	29	194	28	187	27	179	26	172	25
202		201		193		186		178		171
31	201	32	193	33	185	34	178	35	171	36

G-3016

T_h 13. S. R. 66 W.

Field Notes of the Subdivision
lines of Township 13. S. R. 66
W. of the 6th principal Mer-
idian, in Colorado Territory.

To determine the proper adjust-
ment of my compass, for Sub-
dividing this Township, I com-
menced at the corner of Secs 13. & 14.
S. R. 65 & 66 W. and ran
North on a blank line along the
E. Boundary of Secs 36.
on 15th E.

40.06 To a point 26.165 N of the 1/4 Sec cor

80.08 To a point 58.165 N. of the cor-
ner to Secs 25 & 36. therefore my
compass must be adjusted to
a Mag of 14° 35' E.

Subdivision commenced Aug 7th 1866.
and completed Aug 12th 1866.

Names and duties
of assistants

Wick & Deane	} chainmen
Alexander Duncan	
James Fisher	} flagman
Jedl Roe	
	} cornerman.

24 B. S. R. 66 W.

ch's North between Sec's 35 and 36.

Wa 14° 35' E.

4000 Set a Post and chained Stake
in mound for 1/4 Sec cor

6800 Dry Ravine course S. 70° W.

8000 Set a Sand Stone 14 x 9 x 1/4 for
cor to Sec's 25, 26, 35 & 36.

Sound, rolling 2d. rate.

Vegetation, Buffalo grass

Course random line between Sec's 25 & 36.

Wa 14° 45' E.

2150 Spring Branch course S. 60° W.

4000 Set a Stone for Temporary 1/4 Sec cor.

8003 Intersect E. Boundary at
a point 6 lks N of the cor to
Sec's 25 & 36. from which cor
I run N. 87° 59' W. on a true
line between Sec's 25 & 36.

4001 Set a Stone a Petrification.

18 x 12 x 8, for 1/4 Sec cor

8003 The cor to Sec's 25, 26, 35 & 36.

7/4 13 S. R. 66. W.

Land, rolling 2^d rate
Vegetation Bunch grass

North between Sec's 25 & 26.

Wa 14° 35' E.

40.00 Set a Sand Stone 18x12x4,
for 1/4 Sec cor'

80.00 Set a conglomerate Stone
16x12x4, for cor' to Sec's 23,
24, 25 & 26.

Land, gently rolling 2^d rate
Vegetation, Buffalo grass

E. on a random line between Sec's 24 & 25

Wa 14° 45' E

40.00 Set a Sand Stone for temporary 1/4 Sec cor'

80.18 Intersect. E. boundary at a
point 14. Mts. N. of the cor' to Sec's
24, and 25, from which cor' I
run N 89° 54' W. on a true line.

40.09 Set a conglomerate Stone 13x10
x4, for 1/4 Sec cor'

7/4 13 S. R. 66 W.

80.18 The cor' to Sec's 23, 24, 25 & 26.

Land, rolling 2^d rate,
Vegetation, Buffalo grass

North between Sec's 23 & 24,

Wa 14° 35' E

30.80 Dry Ravine course S, 70° W.

38.00 Old road bears S, 70° W.

40.00 Set a conglomerate Stone 15x
10x4, for 1/4 Sec cor'

68.00 Dry Ravine course S, 30° E.

80.00 Set a Sand Stone 40x15x9,
for cor' to Sec's 13, 14, 23, & 24.

Land, except last 23, chs which
is broken, rolling 2^d rate,
Vegetation, Buffalo grass

E. on a random line between Sec's 13 & 24.

Wa 14° 45' E.

30.95 Old Road bears N. & S.

40.00 Set a Stone for temporary 1/4 Sec cor'

80.25 Intersect E. Boundary at

Top 13 S. R 66 W

a point 19 Mts N. of the cor
to Secs 13, & 24, from which
cor I run N. 89° 52' W
on a true line

40.12 Set a Sand Stone 18 X 12 X 4
for 1/4 Sec cor

80.25 The cor to Secs 13, 14, 23, & 24,
Sand, first 25 chs broken
balance rolling 2^d rate
Vegetation Buffalo grass

North between Secs 13 & 14,
Va 14° 30' E.

4000 Set a conglomerate Stone
22 X 12 X 4, for 1/4 Sec cor

8000 Set a conglomerate Stone
15 X 12 X 5 for cor to Secs 11, 12 & 13,
and 14,

Sand, rolling 2^d rate
Vegetation, Buffalo grass

between Secs
12, & 13,

Top 13 S. R. 66 W

250 Ravin course Va 14° 45' E.
N. 70° W
4000 Set a Stone for Temporary 1/4 Sec cor

~~Ravin course N. 70° W~~

7983 Intersect E. Boundary at Post,
cor to Secs 12, & 13, from which,
cor to run W on a true line.

3992 Set a conglomerate Stone 16 X 12,
X 4, for 1/4 Sec cor

7983 The cor to Secs 11, 12, 13, & 14,
Sand, partly rolling 2^d rate,
Vegetation, Bunch & Buffalo grass

North between Secs 11, & 12,
Va 14° 45' E.

1,70 Ravin course N. 30° W.

4000 Set a conglomerate Stone 18 X
10 X 5, for 1/4 Sec cor

8000 Set a conglomerate Stone 16 X
9 X 5, for cor to Secs 1, 2, 11, & 12,
Sand, rolling 2^d rate
Vegetation, Bunch & Buffalo grass

7p. 13. S. R. 66 W.

East on a random
line between Secs 1 & 12.

N₆₄ 14° 45'

40.00 Set a Stone for Tempo-

7p. 13. S. R. 66 W.

near 1/4 Sec corner

70.25 Intersect E. Boundary
line at a point 11 W₁₀₀
N₆₄ cor to Secs 1, & 12.

from which cor. Iron
C. 89' 5" 1/2 N. on a true line

70.14 Set a Post in mound
and and charred Stake
for 1/4 Sec corner.

80.25 The cor. to Secs 1, 2, 11, & 12.
Land rolling. 2nd rate
Vegetation Bunch and
Buffalo grass.

North on a random line
between Secs 1, & 2

N₆₄ 15° E.

1.20 A small Brook came to
N. 80° W. - 10 W₁₀₀ wide

40.00 Set a Post for temporary
1/4 Sec. corner.

75.25 Intersect W. Boundary
line at a point 35' W₁₀₀

Sp 13. S. P. 66 W

W. of the cor. to Sec 1, 2.
from which cor. I run
S. 00° 15' W, on a true line

- 39.95 Set a Post in mound and
sharred stake for $\frac{1}{4}$ Sec. cor.
79.95 The cor. to Secs 12, 11, & 10.
Land rolling, 2^d rate
Vegetation Bunch and
Buffalo grass.

Aug 7, 1869.

North between Secs 34 & 35:

Co. 14° 35' E.

- 14.00 To point of Sand Stone
ridge, bears N 50° W.
40.00 Set a conglomerate stone
37 x 16 x 17. for $\frac{1}{4}$ Sec. cor.
80.00 Set a conglomerate
stone 20 x 8 x 4 for cor. to
Secs 26, 27, 34, & 35.
Land gently rolling 2^d rate
Vegetation Bunch grass
on a random line

Sp 12. S. P. 66 W

between Secs. 26, & 35.

Co. 14° 45' E.

- 5.10 Southern road bears N 40° W.
40.00 Set a stone for temporary
 $\frac{1}{4}$ Sec. corner
79.90 Intersect N. & S. line
at a point 20 lbs. of
cor. to Secs 25, 26, 33, & 34
from which cor. I run
S. 89° 05' 2' W on a true line
39.95 Set a conglomerate stone
22 x 12 x 6 for $\frac{1}{4}$ Sec. cor.
79.90 The cor. to Secs 26, 27, 34, & 35.
Land gently rolling 2^d rate
Vegetation Bunch grass
North between Secs 26 & 27.
Co. 14° 35' E.
8.90 Southern Road, bears N 40° W
40.00 Set a conglomerate stone
23 x 10 x 4. for $\frac{1}{4}$ Sec. cor.
40.80 Dry Ravine course S 75° W.
80.00 Set a conglomerate stone

Twp 13. S. R. 66 W.

24x7x3 for car to Secs
22, 23, 26, & 27

Land nearly level 2nd rate

Vegetation Bunch grass

From a random line

between Secs 23 & 26.

Wa. 15° E.

40.00 Set a stone for temporary 1/4 Sec. corner.

56.40 Dry Ravine, course S 30° W.

79.84 Intersect N. & S. line at a point 110 N. of S. of corner to Secs 23, 24, 25, & 26, from which corner. Run

S 89° 43' W. on a true line

39.92 Set a Sand Stone 14x9x4 for 1/4 Sec. corner.

79.84 The cor. to Secs 22, 23, 26, & 27.

Land nearly level 2nd rate

Vegetation Bunch and

Buffalo Grass

Twp 13. S. R. 66 W.

North between Secs 22 & 23.

Wa. 14° 40' E.

1.67 Old Road bears S. 71° W.

40.00 Set a Conglomerate Stone

13x10x5 for 1/4 Sec. cor.

80.00 Set a Conglomerate

Stone 19x10x4 for cor. to

Secs 14, 15, 22, & 23

Land gently rolling 2nd rate

Vegetation Bunch grass

From a random line between

Secs 14 & 23.

Wa. 15° 15' E.

1.00 Dry Ravine, course S 20° E.

40.00 Set a Stone for temporary

1/4 Sec corner.

77.70 Deep Dry Ravine, course S.

80.23 Intersect N. & S. line at a

point 11 N. of S. of cor

to Secs. 13, 14, 23, & 24

from which corner. Run

S 89° 54' W. on a true line

Twp 13. S. R. 66 W.

- 40 11 Set a Sand Stone 10x10x4
for 1/4 Sec corner.
- 80 23 The cor. to Secs. 14, 15, 22, & 23.
Land broken and stony, 3rd rate
Vegetation Bunch grass
and Curb bushes.
- North between Secs 14, & 15
On 14° 40' E.
- 3.10 Dry Ravine, course S. 30° E.
- 1.00 Top of hill bears E. & W.
- 22.00 Top of same
- 40.00 Set a Conglomerate Stone
13x12x4 for 1/4 Sec cor.
- 80.00 Set a Conglomerate Stone
19x12x9 for cor to Secs
10, 11, 14, & 15
Land first 22 chs. broken
3rd rate, balance rolling, 2nd rate
Vegetation Bunch grass
On a random line
between Secs. 11, & 14,
On 16° 20' E.

Twp 13. S. R. 66 W.

- 34.00 Dry Ravine, course N. & W.
- 40.00 Set a Stone for tempo-
rary 1/4 Sec corner.
- 80.10 Intersect N. & S. line
at a point 9 Secs S.
of cor. to Secs 11, 12, 13, & 14,
from which corner runs
S. 85° 56' W. on a true line
- 40 05 Set a Sand Stone 14x12x3
for 1/4 Sec. cor.
- 80.10 The cor. to Secs. 10, 11, 14, & 15.
Land rolling, 2nd rate
Vegetation Buffalo
and Bunch grass
- North between Secs 10, & 11
On 14° 40' E.
- 14 40 Opposite base of hill
bears E. & W.
- 18.00 St. Brook, flows N. 50 Sec W.
- 40.00 Set a Sand Stone 21x10x4
for 1/4 sec corner.
- 80.00 Set a Sand Stone 15x14x5

Apr. 13. S. P. 65th W.

for cor. to Secs 2, 3, 10, & 11.

Land rolling, 2nd rate

Vegetation Bunch grass

Run a random line

between Secs. 2, & 11

N. 15° 15' E,

20.00 Dry Prairie course S. 20° W.

40.00 Set a stone for temporary
1/4 Sec. corner.

66.20 A Small Brook course
S. 30° W.

80.20 Intersect N. & S. line
at a point 4 lks. S
of cor. to Secs 1, 2, 11, & 12
from which cor. is run
S 59° 58' W on a true line

40.00 Set a sand stone 16 x 14 x 4
for 1/4 Sec. corner.

80.20 The cor. to Secs 2, 3, 10, & 11.

Land rolling, 2nd rate

Vegetation Bunch grass

With an "i" random

Apr. 13 S. P. 65th W.

line between Secs 2, & 3.

N. 15° E,

40.00 Set a stone for tempo-
rary 1/4 Sec. corner.

79.72 Intersect N. Boundary
line at a point 2 E.

lks W. of cor. to Secs

2 & 3, from which cor.

is run S 60° 9' W on a

true line

89.72 Set a conglomerate stone
14 x 8 x 6 for 1/4 Sec. cor.

75.72 The cor. to Secs 2, 3, 10, & 11

Land gently rolling 2nd rate

Vegetation Bunch grass.

Aug. 8th 1866

North between Secs 3, & 34

N. 15° 15' E,

18.00 Point of table land,
bears N. 70° W.

26.00 Top of same

Twp. 13. S. R. 66 W.

- 40.00 Set a sand stone 6x10x6
for 1/4 Sec. corner.
- 41.00 Foot of precipice 40 feet
high, estimated.
- 41.25 Top of same, bears N. 58° W.
- 50.00 Set a conglomerate stone
20x16x8 for cor. to Secs
27, 28, 33, & 34.
Land broken + stone 3/4 rate
Vegetation. Oak brush
with poor grass
E. on a random line
between Secs. 27, & 34
Bears 16° E.
- 29.00 Dry Ravine course N. 30° W.
- 40.00 Set a stone for temporary
1/4 Sec. corner.
- 80.25 Intersect N. & S. line at
a point 21 Mts S. of
cor to Secs. 26, 27, 34 & 35
from which course run

Twp. 13. S. R. 66 W.

- S. 89° 51' W. on a true line
- 46.12 Set a conglomerate stone
20x16x8 for 1/4 Sec. cor.
- 80.25 The cor. to Secs 27, 28, 33, & 34
Land, first 1/2 broken
3/4 rate; last 1/2 gently
rolling 2/3 rate.
Vegetation Bunch grass
North between Secs. 27 & 28,
Bears 15° 15' E.
- 25.00 Begin to descend table land
- 36.40 Foot of same, bears E. & W.
- 44.00 Set a conglomerate stone
14x10x4 for 1/4 Sec corner.
- 41.00 Spring head course W.
- 50.00 Old road bears S. 70° W.
- 63.00 Foot of Point of Ridge
- 58.40 Top of same, bears N. 30° W.
- 63.00 Begin to descend Ridge
- 80.00 Set a conglomerate stone
20x13x4 for cor to Sec
21, 22, 27, & 28.

Gp. 13. S. R. 66 W.

Land hilly and stony ^{3/4} to
Timber on hill. Kat-
tering Pine

Col on a random line be-
tween Secs. 22, & 23.

(Va. 15° 10' E.

- 12.10 Road, bears S.
- 14.50 Southern Road bears S. 30° E.
- 46.55
26.00 Set a stone for temp-
orary 1/4 sec. corner.
Old Road bears S. 11° W.
- 80.30 Intersect N. & S. line at
a point 8' N. of the N. of
car to Secs 22, 23, 24, & 25.
from which car. I run W.
88° 54' W. on a true line
- 40.15 Set a conglomerate stone
16x14x3 for 1/4 sec. corner
- 80.30 The car to Secs 22, 23, 24, & 25
Land gently rolling ^{3/4} to
Vegetation Bunch grass

Gp. 13. S. R. 66 W.

North between Secs 21, & 22
(Va. 15° 20' E.

- 115.0 Foot of hill, bears N. 50° W.
- 39.00 Southern road, bears N. 30° W.
- 40.00 Set a conglomerate stone
20x12x4 for 1/4 sec. corner.
- 80.00 Set a sand stone 18x12x4
for car. to Secs, 15, 16, 21, & 22.
Land gently rolling, ^{2/4} to
Vegetation Bunch and
Buffalo grass.
- Col on a random line
between Secs 15, & 22.
(Va. 15° 15' E.
- 40.10 Set a stone for tempo-
rary 1/4 sec. corner.
- 80.15 Intersect N. & S. line at a
stone car. to Secs 14,
15, 22, & 23, from which
car. I run ~~W.~~ on a true line
- 40.00 Set a sand stone 14x10x4
for 1/4 sec. corner.

170
Twp 13. S. R. 66 W.

- 80.15 The cor. to Secs 15, 16, 21 & 22.
Land gently rolling, 2^d rate
Vegetation Bunch grass
North between Secs 15 & 16.
Va. 15° 15' E.
- 18.00 Dry Run in course W.
- 40.00 Set a conglomerate stone
15 x 12 x 4 for 1/4 sec. corner
- 80.00 Set a conglomerate stone
18 x 9 x 4 for cor. to Secs.
9, 10, 15 & 16.
Land rolling, 2^d rate
Vegetation Bunch grass
E on a random line
between Secs. 10 & 15.
Va 16° 15' E.
- 40.00 Set a stone for temporary
1/4 sec corner
- 80.05 Intersect N. & S. line at a
point 15 lbs. S of cor
to Secs 10, 11, 14 & 15 from
which cor. S runs 85°

171
Twp 13. S. R. 66 W.

- 54' W. on a true line
- 40.02 Set a conglomerate stone
18 x 10 x 4 for 1/4 sec corner.
- 80.05 The cor. to Secs 9, 10, 15 & 16.
Land rolling, 2^d rate
Vegetation Bunch grass
North between Secs 9 & 10
Va. 15° 15' E.
- 20.00 Dry Run course W.
- 40.00 Set a conglomerate stone
13 x 12 x 4 for 1/4 sec corner.
- 80.00 Set a conglomerate stone
18 x 10 x 5 for cor. to Secs.
3, 4, 9 & 10.
Land rolling, 2^d rate
Vegetation Bunch grass
E on a random line between
Secs. 3 & 10
Va. 15° 20' E.
- 40.00 Set a stone for temporary
1/4 sec corner
- 79.94 Intersect N. & S line at

1/2 13. S. R. 66 W

a point 10 lks W of
cor. to Secs. 2, 3, 10, & 11
from which corner I
run N 89° 5' 6" W on a
true line

39,57 Set a longlens rate stone
18x10x5 for 1/4 Sec cor.

79,94 The cor. to Secs. 3, 4, 9, & 10
Land rolling; 2.4 rate
Vegetation Bunch and
Buffalo grass.

North on a random
line between Secs 3, & 4.
Va. 15° 30' E.

40,00 Set a stone for tempo-
rary 1/4 Sec cor.

75,70 Intersect W. Boundary line
at a point 12 lks E. of
the cor. to Secs. 3, & 4. from
which corner I run S. 5' 6"
on a true line

39,70 Set a sand stone 12x11x6

1/2 13. S. R. 66 W

for 1/4 Sec corner

79,70 The cor. to Secs 3, 4, 9, & 10.

Land rolling 2.4 rate

Vegetation Bunch and
Buffalo grass.

Aug. 8th 1866.

North between Secs 29 & 33.

Va. 15° 15' E.

40,00 Set a sand stone 18x12x3
for 1/4 Sec. corner.

62,00 Dry Prairie course S 40° W

64,10 Old road bears S. 30° W.

80,00 Set a sand stone 18x11x4
for cor. to Secs 28, 29, 32, & 33

Land gently rolling 2.4 rate
Vegetation Bunch grass

On a random line
between Secs 28, & 33.

Va 15° 15' E.

13,00 Old road bears S. 40° W.

17,00 Dry Prairie course S. W.

40,00 Set a stone for temporary

Twp. 13 S. R. 66 W.

- 1/4 Sec corner.
 41.00 Foot of table land.
 47.00 Top of same bears N. 6. + S. 6.
 79.85 Intersect N. & S line at a
 point 13 1/2 S. of stone
 to Secs 27, 28, 33, & 34.
 from which cor. I run
 S 89° 5' 4" W on a true line
 39.93 Set a conglomerate Stone
 20 x 16 x 8 for 1/4 Sec cor.
 79.85 The cor. to Secs 28, 29, 32, 33.
 Land first 1/2 broken
 and stony 3rd rate, last
 1/2 rolling, 3rd rate
 Vegetation Bunch grass
 Works between Secs 28 & 29,
 On 16° 20' E.
 49.00 Set a conglomerate Stone
 16 x 12 x 8 for 1/4 Sec. corner
 45.00 Foot of hill bears N 60° W.
 80.00 Set a conglomerate stone
 22 x 10 x 8 with stone mound

Twp. 13 S. R. 66 W.

- for cor. to Secs 20, 21, 26 & 27.
 Land first 45 chains, rolling
 2nd rate, balance broken
 and stony, 3rd rate
 Some scattering Pine on
 last 35 chains
 On a random line
 between Secs, 21, & 28,
 On 15° 30' E
 70.00 Set a Stone for temporary
 1/4 Sec. corner.
 42.00 Foot of hill bears N. 20° E.
 58.00 Dry Ravine, course S 10° W.
 60.00 Table of hill bears S 10° W
 65.00 Top of same.
 79.92 Intersect N. & S line at a
 point 16 1/2 S. of cor. to
 Secs 21, 22, 27, & 28, from
 which cor. I run S.
 89° 5' 3" W on a true line
 39.96 Set a Sand Stone 12 x 10 x 8
 for 1/4 Sec. cor.

Twp 13. S. R. 66 W.

- 79,92 The cor. to Secs. 20, 21, 28 & 29
Land broken, 2nd rate
Vegetation Bunch and
Buffalo Grass.
- N. between Secs. 20 & 21
Va. 15° 20' E.
- 40,00 ²⁰⁰ ^{out of Hill} ^{bears E. NW.} Set a Conglomerate
Stone 18 x 16 x 3 for 1/4 sec. cor.
From which a Pine
14 in. in diameter bears S. 25° W
121 lbs distant
- 58,80 Dry Ravine course N.W.
- 60,20 Dry Ravine course S.W.
- 80,00 Set a conglomerate Stone
24 x 12 x 8 for cor. to Sec
16, 17, 20 & 21
Land broken, 3rd rate
Timber scattering Pine
From a random line
between Secs 16, & 21
Va. 15° 15' E.
- 20,00 Leave hills, bear N. & S.

Twp 13 S. R. 66 W

- 40,00 Set a Stone for temporary
1/4 sec. corner
- 59,20 Same as then road bears N.
- 79,80 Intersect ch. & Spring at
a point - 23 lbs. S. &
cor. to Secs. 15, 16, 20 & 22
from which cor. Iron
S 89° 6' 0" W. on a true line
- 39,90 Set a conglomerate Stone
16 x 12 x 4 for 1/4 sec. cor.
- 79,80 The cor. to Secs. 16, 17, 20 & 21
Land rolling, 2nd rate
Vegetation Bunch and
Buffalo grass.
- North between Secs 16 & 17
Va 15° 30' E.
- 29,10 Dry Ravine course N 70° W.
- 40,00 Set a Conglomerate Stone
16 x 12 x 4 for 1/4 sec. cor.
from which a Pine 20 in.
in diameter bears S 20°
W 13 lbs dist

Sp. 13 S. Rock W.

- 4300 Loose scattering Pine
timbers - bears E. & W.
- 64.00 Dry Porine. course N. 60° W.
- 80.00 Set a conglomerate Stone
14 x 10 x 4 for cor to Sec
8, 9, 10, & 11
Land rolling, 2^d rate
Timber scattering Pine
on first 1/2
Vegetation Bunch grass
On a random line
between Secs 9 & 10,
On 15° 30' E,
- 40.00 Set a Stone for tempo-
rary 1/4 sec corner.
- 62.50 Southern road, bears N. 20° E.
- 75.55 Intersect N. & S. line at a
point 3 1/2 k S. of cor to
Secs, 9, 10, 15 & 16 from
a high cor. I run S 85° 59' W.
on a true line
- 32.52 Set a conglomerate

Sp. 13 E. Rock W.

- Stone 20 x 12 x 3, for 1/4
sec corner.
- 75.55 The cor. to Secs 8, 9, 10, & 11.
Land rolling, 2^d rate
Vegetation Bunch
and Buffalo grass.
North between Secs 8 & 9
On 15° 30' E.
- 23.60 Dry Porine, course W
- 4000 Set a conglomerate
Stone 130 x 12 x 4 for
1/4 sec corner
- 80.00 Set a conglomerate Stone
14 x 10 x 4 for cor to Secs
4, 5, 8, & 9
Land rolling, 2^d rate
Vegetation Bunch and
Buffalo grass.
On a random line
between Secs 4, & 5.
On 15° 30' E.
- 14.06 Old Southern road bears S 10° W.

Twp 13 S. R. 66 W.

- 40.00 Set a Stone for temporary $\frac{1}{4}$ Sec corner
- 79.62 Intersect N. & S. line at a point 12 $\frac{1}{2}$ $\frac{1}{2}$ $\frac{1}{2}$ cor. to Secs 9, 4, 9, & 10. from which cor. I run N. $59^{\circ}35'$ W. on a true line
- 39.81 Set a conglomerate stone $13 \times 12 \times 3$ for $\frac{1}{4}$ sec cor.
- 79.62 The cor. to Secs 4, 5, 8, & 9. Land rolling. 2nd rate Vegetation Bunch and Buffalo grass.
North on a random line between Secs 4, & 5.
N. $15^{\circ} 30' E$.
- 16.20 Southern Road bears $N 40^{\circ} W$.
- 40.00 Set a Stone for temporary $\frac{1}{4}$ Sec. cor.
- 42.00 Wide flat Ravine crossed S. $80^{\circ} W$.
- 79.60 Dig Ravine, crossed $60^{\circ} W$.

Twp 13 S. R. 66 W.

- 79.60 Intersect N. Boundary line at a point 51 $\frac{1}{2}$ $\frac{1}{2}$ $\frac{1}{2}$ E. of corner to Secs. 4, & 5. from which cor. I run S. $22^{\circ} E$. on a true line
- 39.60 Set a Sand Stone $14 \times 12 \times 3$ for $\frac{1}{4}$ Sec corner
- 79.60 The cor. to Secs. 4, 5, 8, & 9 Land rolling. 2nd rate Vegetation Bunch and Buffalo grass.
Aug 10th 1866
North between Secs 31, & 32.
N. $15^{\circ} 30' E$.
- 40.00 Set a sand stone $15 \times 12 \times 4$ for $\frac{1}{4}$ Sec corner
- 80.00 Set a sand stone $15 \times 10 \times 6$ for cor. to Secs, 29, 30, 31, & 32. Land level 1st rate Vegetation Bunch grass.
on a random line between Secs 29, & 32

Yp 13 S. R. 66 W.

- 40.00 Set a Stone for temporary 1/4 Sec corner.
 80.00 Intersect N. & S. line at
 * at point 18' E of
 cor to Secs 28, 29, 30, & 31.
 from which cor. I run
 S 89° 52' W on a true line
 40.00 Set a sand stone 14x5x4
 for 1/4 Sec. cor.
 80.00 The cor to Secs. 29, 30, 31, & 32
 Land first 1/2 level, 1st rate
 balance gently rolling, 2nd rate
 Vegetation Bunch grass
 Mon a round line
 between Secs. 30, & 31
 Cr. 15° 30' E.
 29.50 Road. Cross S. 20 W.
 40.00 Set a Stone for temporary
 1/4 Sec corner
 70.00 Monument Creek runs S.
 here 60° links with

Yp 13 S. R. 66 W.

- 79.88 Intersect W. boundary
 line at a point 12' N
 of cor to Secs 30, & 31
 from which cor. I run
 W 89° 55' E on a true line
 39.88 Set a Granite Boulder
 Stone 22x9x8, for
 1/4 Sec. corner
 49.88 The cor to Secs. 29, 30, 31, & 32
 Land level, 1st rate
 Vegetation Bunch and
 Buffalo grass.
 North between Secs 29, & 30
 Cr. 15° 30' E
 40.00 Set a Sand Stone 16x12x4
 for 1/4 Sec. corner.
 80.00 Set a conglomerate
 Stone 16x12x4 for cor
 to Secs 19, 20, 29, & 30.
 Land gently rolling, 2nd rate
 Vegetation Bunch &
 Buffalo grass

Tp. 13, S. R. 66, W.

On a random line
between Secs 20, & 25.

Var. $15^{\circ} 30' E$

- 25.50 Top of hill
40.00 Set a Stone for temporary
1/4 Sec cor.
47.00 Top of hill, bears $81.5^{\circ} E$.
80.18 Intersect W. & S line at
a point 30 lks S of
cor to Secs 20, 21, 28, & 29
from which cor. I run
 $S 89^{\circ} 48' W$ on a true line
49.00 Set a sand Stone 15' N of
for 1/4 Sec corner.
80.18 The cor to Secs 19, 20, 29, & 30
found first 25 chains gentle
rolling 2nd rate, balance
broken - 3rd rate
Vegetation Bunch &
Buffalo grass

 (Was on a random line

Tp. 13, S. R. 66, W.

between Secs 19, & 20.

Var. $14^{\circ} 30' E$.

- 1.25 Road bears $N. 7^{\circ} S$.
1130 Old Road bears $S. 30^{\circ} W$.
30.50 Monument creek runs
S. W. - 40 lks wide
40.00 Set a Post for tempo
rary 1/4 sec corner.
79.76 Intersect W. Boundary
line at a point 20 lks
W. of cor. to Secs 19, & 20.
from which cor. I run
 $N. 89^{\circ} 51' E$ on a true line
59.76 Set a Post in mound
and charred Stake for 1/4 sec cor.
79.76 The cor. to Secs 19, 20, 29, & 30
found gentle rolling 2nd rate
vegetation - Bunch grass
North between 19, & 20
10.00 (Var. $14^{\circ} 30' E$)
1035 Road, bears $N. 30^{\circ} E$
11.00 Dry Prairie, course W.

Yp. 13. S. R. 6 E W.

- 12,87 A Pine, 24 in in diameter
 23,30 Dry Ravine course $N. 70^{\circ} W.$
 25,00 Road, bears $N. 40^{\circ} W.$
 40,00 Set a conglomerate stone
 15 x 14 x 4 for $\frac{1}{4}$ sec. corner.
 56,00 Wide flat Ravine course $N. 80^{\circ} W.$
 75,40 Road, bears $N. 40^{\circ} E.$
 78,50 Dry Ravine course $N. 20^{\circ} W.$
 80,00 Set a sand stone $30^{\circ} x$
 12 x 7, for cor. to Secs 17,
 18, 19, & 20
 Land rolling, 2^{d} rate
 Vegetation bunch and
 Buffalo grass

 E. on a random line
 between Secs. 17, & 20
 $N. 15^{\circ} 45' E.$
 1,50 Road, bears $N. 40^{\circ} E.$
 4,50 Foot of hill
 24,00 Top of dome bears $N. 20^{\circ} W.$
 40,00 Set a stone for tempo-
 rary $\frac{1}{4}$ sec corner

Yp. 13. S. R. 6 E W

- 8909 Intersect $N. 74^{\circ} S.$ line at
 a point 7 lbs $N. 74^{\circ}$
 cor to Secs. 19, 17, 20 & 21
 from which cor. I
 run $N. 89^{\circ} 57' W.$
 on a true line
 4004 Set sand stone, 14 x 12 x 3
 for $\frac{1}{4}$ sec corner.
 80,09 The cor. to Secs. 17, 18, 19 & 20.
 Land broken & stony 3^{d} rate
 Timber scattering fire
 Aug. 11, ~~1866~~ 1866.

 W. on a random line
 between Secs 18, & 19
 $N. 45^{\circ} 45' E.$
 400- Deep Dry Ravine
 course $N. 60^{\circ} W.$
 25,00 Monument creek
 runs $S. 40^{\circ} W.$, 75 lbs wide
 29,60 Ravine course $S.$
 40,00 Set a stone for tempo-
 rary $\frac{1}{4}$ sec corner.

T 13 S, R. 6 E W.

- 79,89 Intersect N. Boundary
line at a point 8 1/2
S. of cor. to Secs 8, 9, 16,
from which cor. I run
S 89.5-41 E. on a true line
- 58,89 Set a Granite Stone 15x12x4
for 1/4 sec corner
- 79,89 The cor. to Secs 17, 18, 19 & 20
Land rolling, 24 rate
Vegetation Bunch grass
North between Sec 15, 18
Va. 15° 45' E.
- ,75 Road bears W. about from intersection
2,20 Dry Ravine course W.
33,00 Dry Ravine, course W.
40,00 Set a conglomerate Stone
20x9x4 for 1/4 sec corner
Road bears N. 30° E.
64,00 Dry Ravine course W.
80,00 Set a conglomerate Stone
22x12x4 for corner to Secs
7, 8, 17, & 18.
Land rolling, 24 rate

T 13 S, R. 6 E W.

- Vegetation Bunch and
Buffalo grass
— E on a random line
between Secs. 17 & 18.
Va 15° 30' E.
- 5,00 Road, bears N. 72° E.
28,00 Bend in Dry Ravine
course, S. 100° W.
- 45,00 Set a Stone for tempo
rary 1/4 sec cor.
- 80,50 Intersect N. & S. line at
a point 30' S. of S. of
cor. to Secs 8, 9, 16, & 17
from which cor. I run S.
89° 44' W. on a true line
- 49,25 Set a conglomerate Stone
20x12x3 for 1/4 sec cor.
- 80,50 The cor. to Secs, 7, 8, 17, & 18
Land rolling, 24 rate
Vegetation Bunch and
Buffalo grass
— N on a random line

Sp 13. S. R. 66 W

between Secs 7, & 18.
(Co. $15^{\circ} 45' E$)

- 10.10 Monument over to
cause S. $10^{\circ} E$.
- 17.00 Dry Run in a course S
- 25.00 Foot of hill Co. bears N. & S.
- 25.00 Top of same.
- 40.00 Set a Stone for tempo-
rary $\frac{1}{4}$ sec. cor.
- 50.48 Intersect N. Boundary
line at a point 16 $\frac{1}{2}$ S.
of cor. to Secs 7, & 18,
from a high cor. Iron
S. $89^{\circ} 53'$ on a true line
- 40.68 Set a Boulder Stone 15' x
13' x 4' for $\frac{1}{4}$ sec. cor.
- 80.48 The cor to Secs. 7, 15, 17 & 18.
Land broken, 3 $\frac{1}{2}$ rate
Timber scattering Pine
North between Secs. 7, & 8.
(Co. $15^{\circ} 46' E$)
- 10.10 A Burn of clear fresh

Sp 13. S. R. 66 W

water course. &

- 40.00 Set a Conglomerate Stone
15' x 9' x 4' for $\frac{1}{4}$ sec. cor.
- 73.00 A small brook runs S. & W.
- 75.30 Road, bears S. $60^{\circ} E$.
- 80.00 Set a Conglomerate Stone
19' x 9' x 3' for cor to Secs
5, 6, 7, & 8.
Land rolling, 2 $\frac{1}{2}$ rate
Vegetation. Bunch &
Buffalo grass.
C. on a random line
between Secs. 5, 7 & 8.
(Co. $15^{\circ} 45' E$)
- 1.00 Spring Brook, course S $10^{\circ} W$.
- 40.00 Set a Stone for temporary
 $\frac{1}{4}$ sec. corner.
- 80.20 Intersect N. & S. line
at a point 14 $\frac{1}{2}$ S.
of cor to Secs. 4, 5, 6, & 7
from which cor. Iron
S. $89^{\circ} 54'$ N. on a true line

Gp. 13. S. R. E. W.

- 40,10 Set a conglomerate stone
17x12x4 for 1/4 sec. cor.
- 80,20 The cor. to Secs 5, 6, 7, & 8
Land rolling, 2^d rate
Vegetation Bunchgrass
Buffalo grass
W. on a random line
between Secs. 6 & 7.
N. 15° 45' E.
- 17,20 Old road, bears N. & S.
- 25,00 Monument creek
runs S. 30° W. 60th mile
- 40,00 Set a Stone for temporary
1/4 sec corner.
- 47,60 Colorado City road bears
N. & S.
- 50,00 Foot of hill bears N. & S.
- 56,00 Top of same.
- 80,90 Intersect W. Boundary
line at a point 20th k
S. of cor. to Secs. 6 & 7.
from which cor I run

Gp. 13. S. R. E. W.

- S 89° 51' on a true line
- 40,90 Set a Boulder Stone 17x
10x6 for 1/4 sec corner.
- 80,90 The cor. to Secs 5, 6, 7, & 8
Land first 1/2 rolling, 2^d rate
balance broken, 3^d rate,
Vegetation Bunchgrass
Buffalo grass
W. on a random
line between Secs. 5 & 6.
N. 15° 45' E.
- 40,00 Set a Stone for tempo-
rary 1/4 sec cor.
- 77,80 Road to Col. hit bears S. W.
- 80,30 Intersect W. Boundary line
at a point 44 k S. of
the cor. to Secs 5 & 6 from
which cor. I run S. 27° E.
on a true line
- 40,30 Set a conglomerate stone
13x10x4 for 1/4 sec cor.
- 80,30 The cor. to Secs 5, 6, 7, & 8,

Twp 13. S. R. 66 W
 Land gently rolling ~~to~~
 Vegetation Birch and
 Buffalo grass.
 Aug. 12th 1866

General Description
 The quality of land in this
 Township is on an average 2^d
 rate land. there is a small
 portion of good farming land
 a long Monument Creek, which
 courses through the Western tier
 of Secs. and affords a moderate
 supply of water for irrigation.
 The ^{up} lands produce a good qu-
 ality ^{of grass} in a bundance.
 There ^{are} two or three settlements in
 the Township. on Monument
 creek.

There are several good quarries of
 Sandstone (principally Sand) in the Sides
 of the Hills.

Twp 13. S. R. 66. W.
 On the line between Secs 18 & 19,
 and in the E. Bank of Mon-
 ument Creek I discovered a
 good coal Bank.



Twp. 12. S. R. ~~64~~⁶⁵ W.
 There are several good Springs
 of fresh water, and also
 several small streams
 in the Township affording
 an ample supply of
 water for ordinary pur-
 poses.

We hereby certify that we
 assisted Wm Ashley deputy
 surveyor in surveying the
 Exterior lines of Twp 18 S. R.
 64 W. The subdivisional lines
 of Twp. ~~18~~ S. R. 64 W. 18 S 65
 W. 12, 14 + 15 S. R. 65 - 12
 + 13 S. R. 66 W. of the 6th
 Principal Meridian in
 Colorado and that said
 the have been in all re-
 spects to the best of our
 knowledge and belief well
 and faithfully surveyed
 and the boundary monuments
 planted according to the
 instructions furnished by
 the Surv. Genl.

Alexander J. Deane }
 Cecil A. Deane } Chairman
 Jas. A. Fisher } Flyman
 Joel Roe } Monumentman

Territory of Colorado 3rd
 Arapahoe County 3rd
 Subscribed
 by the above named persons
 and sworn to before me
 this 7th day of Sept. 1866.
 Eli W. Ashley
 Notary Public

I William Ashley, deputy
 surveyor, do solemnly swear
 that in pursuance of a con-
 tract with John Perce's sur-
 veyor Gen. of the public lands
 of the United State in the
 Territory of Colorado bearing
 date the 25th of May 1866
 and in strict conformity to
 the laws of the U.S. and

the instructions furnished
 by the Surv. Genl. I have
 faithfully surveyed the
 exterior lines of Tps. 18 S. R.
 64 W. and the subdivisinal
 lines of Tps. 18 S. R. 64, 18 S. R.
 65, 12, 14 & 15 S. R. 65, 12 &
 13 S. R. 66, W of the 6th Prime
 Meridian in Colorado, and
 do further solemnly swear
 that the foregoing are the
 true and original field notes
 of such survey

William Ashley
 Deputy Surveyor.

Territory of Colorado 3rd
 Arapahoe County 3rd
 Subscribed
 and sworn to before me this
 7th day of Sept 1866.
 Eli W. Ashley
 Notary Public

Survey General's office
 Denver Sept. 24th 1866.
 The foregoing field notes
 of the survey of the exterior
 lines of Tps. 18 S. R 64 N. and
 the subdivisional lines of
 Tps. 18 S. R 64, 18 S R 65, 12
 14 & 15 S R 65 and 12 & 13
 S R 64 N. of the 6th Prin-
 Meridian - executed by Wm
 Abley under his contract
 of ~~May~~ 25th 1866 - having
 been critically examined
 the necessary corrections and
 explanation, made the said
 field notes and the surveys
 they describe are hereby
 approved

John Pine
 Survey General
 of Colorado & Utah

CERTIFICATE OF SURVEY

I, Henry U. Lang, HEREBY CERTIFY upon honor that,
 in pursuance of special instructions bearing date of the 27th day of October, 1955,
 I have made the dependent resurvey of part of the exterior and subdivision
 lines and subdivided certain sections in T. 46 N., R. 17 W.

of the New Mexico Principal Meridian, in the State of Colorado, which
 are represented in the foregoing field notes as having been executed by me and under my direction;
 and that said survey has been made in strict conformity with said special instructions, the Manual
 of Instructions for the Survey of the Public Lands of the United States, and in specific manner
 described in the foregoing field notes.

May 10, 1966
 (Date)

Henry U. Lang
 (Cadastral Surveyor)
 Henry U. Lang

(Date)

(Cadastral Surveyor)

CERTIFICATE OF APPROVAL

SUBMITTED FOR APPROVAL
 Date MAY 20 1966

BUREAU OF LAND MANAGEMENT,
 Washington, D. C.

The foregoing field notes of the dependent resurvey of part of the exterior and
 subdivision of T. 46 N., R. 17 W., New Mexico Principal Meridian.

executed by Henry U. Lang

having been critically examined and found correct, are hereby approved.

JUN 8 1966
 (Date)

E. L. Livingston
 (Chief, Division of Engineering)

CERTIFICATE OF TRANSCRIPT

I CERTIFY That the foregoing transcript of the field notes of the above-described surveys in
 _____, is a true copy of the original field notes.

(Date)

(Chief, Division of Engineering)

FIELD NOTES

OF THE

DEPENDENT RESURVEY OF THE BOUNDARIES

AND

PARTIAL SUBDIVISION OF SECTIONS 5 AND 6,

T. 13 S., R. 46 W.,

Of the Sixth Principal Meridian,

In the State of Colorado

EXECUTED BY

Leonard W. Murphy, Cadastral Surveyor

Under special instructions dated March 23, 1956, which provided for the surveys
 included under Group Number 532, Colorado, approved April 1, 1966,
 and assignment instructions dated April 1, 1966,

Survey commenced April 1, 1966

Survey completed May 17, 1966

INDEX DIAGRAM

Township 13 South, Range 66 West

5	3				
2	10	6	4	8	1
9	7				
7	8	9	10	11	12
13	17	18	15	14	16
20	23	21	22	25	24
26	29	28	27	30	25
31	32	33	34	35	36

Center lines Section 5. Page 11

Center lines Section 6. Page 11

Township 13 South, Range 66 West
Sixth Principal Meridian, Colorado

CLAIMS

The following field notes describe the dependent resurvey of the boundaries and partial subdivision of secs. 5 and 6, T. 13 S., R. 66 W., 6th P. M., Colorado.

The resurveys were made in strict adherence to the regulations governing dependent resurveys and subdivision of sections specified in the Manual of Surveying Instructions and the provisions of the Special Instructions dated March 23, 1966.

These resurveys were made at the request of the U. S. Army Corps of Engineers, Omaha District Office. The purpose of the resurvey was to provide section boundaries which control certain segments of the boundary of the U. S. Air Force Academy. In addition to the usual section boundaries, a limited subdivision of each section was made and the center quarter-section corners were established. No attempt was made to define the irregular portions of the actual boundary of the Air Force Academy Site.

All bearings in these notes are referred to the true meridian as determined by angulation from the permanently established triangulation station "Pine Valley" as described in the official record of the U. S. Coast and Geodetic Survey in 1953. The azimuth mark was reset in 1966 and the new value therefor was used in determining bearings of true lines. It is to be noted, bearings of all previous surveys of the Air Force Academy Boundary and the pertinent section lines have been reported as plane grid bearings based on the Colorado Central Zone.

Only true horizontal distances are shown in these field notes. The length of the line between secs. 4 and 5 and the east half mile of the line between secs. 5 and 6 were ascertained with Tellurimeters. These lines were used as basis for comparison in computing closures of the individual section boundaries.

According to the official records on file in the Colorado Land Office, the survey of the township boundaries was executed by A. Z. Sheldon, in 1864. The section lines were surveyed by Deputy William Ashley, in 1866. Since the date of the original surveys, innumerable local surveys have been made and the survey of the Air Force Academy Boundary was made in 1958. Extensive records of these surveys are on file at the El Paso County Court House, in Colorado Springs.

All lands in these sections are patented. In the establishment of the Air Force Academy, large portions of sections 5 and 6 were acquired by the U. S. Government. These acquired lands are described by metes and bounds survey descriptions which are dependent upon the regular section and quarter section corners of secs. 5 and 6.

The latitude and longitude of the corners of secs. 5 and 6, T. 13 S., R. 66 W., can be obtained from the tie to U. S. Coast and Geodetic Survey Station "Pine Valley". The published geographic coordinates of that station are: latitude 38° 58' 10".844, North, Longitude 104° 48' 44".276 West. The station is connected by direct tie to the corner of secs. 5, 6, 31 and 32, Tps. 12 and 13 S., R. 66 W.

Dependent Resurvey of the Boundaries of Secs. 5 and 6,
T. 13 S., R. 66 W., 6th P.M.

CHAINS	
	Dependent Resurvey of a Portion of the West Boundary of T. 13 S., R. 66 W.
	Reestablishing the Survey Executed by Deputy A. Z. Sheldon, in 1864.
	The corner of secs. 1, 6, 7 and 12, Tps. 13 S., Rs. 66 and 67 W., is marked by the original monument, a granite stone, 24x12x6 ins., firmly set in the corner of old and abandoned fences bearing N., S., E. and W., marked with five notches on the south and one notch on the north faces.
	At the corner point, Set an iron post, 2 ins. diam., 30 ins. long, 18 ins. in the ground, with brass cap mkd.,
	$\begin{array}{r} T13S \\ R67W R66W \\ S 1 S 6 \\ \hline S12 S 7 \\ 1966 \end{array}$
	Bury the old stone monument alongside the iron post; raise a mound of stone, 3 ft. base, around iron post.
	From the corner, N. 0° 05' E., between secs. 1 and 6.
	Over rolling land, along fence, through scattered pine timber.
11.80	Spur, slopes SE.
28.75	Small wash, dry, course E., asc. southerly slopes.
38.00	Top of ridge, bears E. and W., desc. northerly slope.
39.88	The $\frac{1}{4}$ sec. cor. of secs. 1 and 6, marked by the original monument, a granite stone, 18x10x6 ins., firmly set in the ground, in small mound of stones, mkd. $\frac{1}{4}$ on W. face.
	At the corner point, Set an iron post, 2 ins. diam., 30 ins. long, 24 ins. in the ground, with brass cap mkd.
	$\begin{array}{r} \frac{1}{4} \\ S 1 S 6 \\ 1966 \end{array}$
	Bury the original corner stone alongside the iron post; raise a mound of stones around the post. The corner is set at corner of fences bearing E., W. and S.
	N. 0° 05' E., bet. secs. 1 and 6, beginning new measure- ment.
	Descending northerly slopes.

Dependent Resurvey of a Portion of the
West Boundary of T. 13 S., R. 66 W.

CHAINS	
6.05	Creek, 5 lks. wide, course E., asc. S. slopes.
10.00	Top of ridge, bears E. and W., desc. broken northeasterly slopes.
21.00	Center of track, Denver and Rio Grande Western Railroad track on curve from N. 45° W. to S. 35° E.
28.00	Monument Creek, 15 lks. wide, course SE.
29.82	U. S. Air Force Academy Boundary marker, B 60, a standard brass tablet seated in concrete form the top of which is flush with the surface. The brass cap is marked USAF B 60.
38.10	Paved road, bears NE. and SW.
39.74	The corner of Tps. 12 and 13 S., Rs. 66 and 67 W., marked by the original monument, a granite stone 16x10x5 ins., firmly set in mound of stone, marked with six notches on four edges.
	At the corner point, Set an iron post, 2 ins. diam., 30 ins. long, 26 ins. in the ground, with brass cap mkd.
	$\begin{array}{r} T12S \\ R67W R66W \\ S 1 S 3 \\ \hline T13S \\ 1966 \end{array}$
	Bury the old stone at base of iron post; raise a mound of stone, 3 ft. base, 2½ ft. high, W. of corner.
	The corner falls in large cleared area within the U. S. Air Force Academy.
	Dependent Resurvey of a Portion of the North Boundary of T. 13 S., R. 66 W.
	Reestablishing the Survey executed by Deputy Surveyor A. Z. Sheldon, in 1864.
	The corner of secs. 4, 5, 32 and 33, Tps. 12 and 13 S., R. 66 W., is marked by an iron pipe, 1½ ins. in diam., set in old fence bearing N. and S. Local surveyors records indicate this pipe was set in place of a decayed conglomerate stone which had been accepted as the orig- inal corner of the sections to which it is referred. The first formal record of the remonumentation of this corner indicates its acceptance prior to 1940.
	At the corner point, Set an iron post, 2 ins. diam., 30 ins. long, 26 ins. in the ground, with brass cap mkd.

Dependent Resurvey of a Portion of the
North Boundary of T. 13 S., R. 66 W.

CHAINS	DESCRIPTION
	<p>T128 R66W S32/S33 S 5/8 4 T138 R66W 1966</p> <p>Place the iron pipe in hole alongside the post; place several stones alongside the post. No other accessories available.</p> <p>From the corner point, N. 89° 55' W., between secs. 5 and 32.</p> <p>Along old, partially fallen fence, over rolling land.</p> <p>7.50 Head of small dry draw, drains SW.</p> <p>20.38 Corner of fences, bearing E., SW. and N. The fences SW and N., mark the true boundary of the Air Force Academy Site. The corner post of these fences represents Corner 7 of the Boundary traverse.</p> <p>20.43 Witness Corner B 7, U. S. Air Force Academy, marked by a standard brass tablet, seated in concrete cylinder, bears S., 1 lk. dist. The brass cap is marked USAF B 7.5 ft. SW. of Cor.</p> <p>25.00 Center of paved State Highway No. 83, bears N. to Black Forest and S. to SW. to Academy Boulevard Junction.</p> <p>39.14 Pine Creek, a trickle of water in sandy wash, course S.</p> <p>40.24 Point for the $\frac{1}{4}$ sec. cor. of secs. 5 and 32, at proportionate distance; there is no remaining evidence of the original corner monument.</p> <p>Set an iron post, 2 ins. diam., 30 ins. long, 24 ins. in the ground, with brass cap mkd.</p> <p>T128 R66W $\frac{1}{4}$ S 32 S 5 T138 1966</p> <p>Corner is set 9 lks. S. of concrete lined drainage ditch; 110 lks. westerly of W. edge of concrete culvert on Pine Creek.</p> <p>41.92 Center of east limb of U. S. Highway I-25, bears generally NE. to N. and SW. to W., at N. edge of south interchange to Air Force Academy Boulevard Entrance to Academy.</p> <p>44.20 Center west limb of interchange. Line continues generally along graded fills from interchange.</p> <p>79.00 Enter Academy Boulevard paved road at south gate to Air Force Academy. Gate House bears S., 27 ft. dist.</p> <p>80.48 Point for the corner of secs. 5, 6, 31 and 32, marked by the intersection of the center line of old U. S. Highway 85, as constructed in 1924, and the remaining evidence of an old wire fence, now partially obliterated. The position was further verified by ties to the Townsite of Bread, Colorado, plats of which are dated 1929 and 1947, on file in the El Paso County Offices, in Colorado</p>

Dependent Resurvey of a Portion of the
North Boundary of T. 13 S., R. 66 W.

CHAINS	DESCRIPTION
	<p>Springs. This position was further verified by County Surveyor T. J. Russell while at the actual site of the corner.</p> <p>At the corner point, Drive a steel spike, 8 ins. long, in the pavement at the south edge of the north limb of Academy Boulevard.</p> <p>From the corner</p> <p>An iron post, 2 ins. diam., 30 ins. long, set 27 ins. in the ground for a reference monument, bears N. 45° E., 1.515 chs. dist. The brass cap is mkd. T128 R66W S32 100 FT and an arrow pointing toward the corner.</p> <p>An iron post, 2 ins. diam., 30 ins. long, set 27 ins. in the ground for a reference monument, bears N. 45° W., 1.515 chs. dist. The brass cap is mkd. T128 R66W S31 100 FT and an arrow pointing toward the corner.</p> <p>A point on the curb and the west end of a concrete traffic separator bears S. 60° E., 7 lks. dist.</p> <p>The Sentry House at the South Gate of the Air Force Academy bears S. 70° E., about 60 lks.</p> <p>The corner is situated in the southern edge of the north limb of Academy Boulevard and in the east edge of the divided intersection of a paved road extending south to the Air Force Academy Museum and an abandoned paved road bearing north.</p> <p>From the corner, Triangulation Station "Pine Valley" established by the U. S. Coast and Geodetic Survey, bears N. 1° 13' W., 82.28 chs. dist. The station is marked by a standard bronze tablet, seated in a concrete cylinder, in the east edge of the present access road serving the Pine Valley Airport, an installation of the Air Force Academy.</p> <p>S. 89° 32' W., between secs. 6 and 31.</p> <p>Along divider and pavement of Academy Boulevard, over nearly level landscaped areas adjacent to the highway.</p> <p>11.00 Highway bears N. 85° W. and S. 86° E., over graded grass land.</p> <p>38.85 Center of track, A. T. and S. F. Railroad, track bears NW. and SE.</p> <p>39.86 Point for the $\frac{1}{4}$ sec. cor. of secs. 31 and 6 falls in an area that has been graded and filled. There is no remaining evidence of the original $\frac{1}{4}$ sec. cor. As far as can be determined, there are no ties or other reference points from which this corner position can be recovered.</p> <p>At the proportionate point for the corner, Set an iron post, 2 ins. diam., 30 ins. long, 26 ins. in the ground, with brass cap mkd.</p>

Dependent Resurvey of a Portion of the
North Boundary of T. 13 S., R. 66 W.

	<p>T128 R66W $\frac{1}{4}$ $\frac{S}{8}$ $\frac{31}{6}$ T138 1966</p> <p>No suitable accessories available.</p> <p>The corner falls in telephone line bearing N. and S., in a filled and landscaped area, 10. lks. W. of railroad track.</p> <p>43.00 Descend cut bank sloping west.</p> <p>47.10 Kettle Creek, 15 lks. wide, course SW.</p> <p>52.00 Top of bank, over nearly level land.</p> <p>76.20 Center of paved street, bears NE. and SW.</p> <p>80.54 The corner of Tps. 12 and 13 S., Rs. 66 and 67 W.</p>
	<p>Dependent Resurvey of the Boundaries of Secs. 5 and 6, T. 13 S., R. 66 W.</p>
	<p>Reestablishing the Survey Executed by Deputy William Ashley, in 1966.</p> <p>The corner of secs. 4, 5, 8 and 9, is marked by an iron bolt, 18 ins. long, set 6 ins. below the surface of Grashio Drive, an improved street in line between Falcon Heights and Columbine Subdivisions. This bolt marks the true position of the original corner of the secs. which was destroyed in street grading operations. The corner position has been recognized for over fifty years.</p> <p>At the corner point,</p> <p>Set an iron post, 2 ins. diam., 30 ins. long, 6 ins. below the surface of Grashio Drive, with brass cap mkd.</p> <p>T138 R66W $\frac{1}{4}$ $\frac{S}{8}$ $\frac{5}{9}$ 1966</p> <p>from which,</p> <p>An iron post, 2 ins. diam., 30 ins. long, set 26 ins. in the ground for a reference monument, bears East, 47 lks. dist. The brass cap is marked T138 R66W RM 31.0 FT and an arrow pointing toward the corner.</p> <p>An iron post, 2 ins. diam., 30 ins. long, set 26 ins. in the ground, for a reference monument bears West, 47 lks. dist. The brass cap is marked T138 R66W RM 31.0 FT and an arrow pointing toward the corner.</p> <p>From the corner,</p> <p>N. 0° 01' W., between secs. 4 and 5.</p>

Dependent Resurvey of the Boundaries of
Secs. 5 and 6, T. 13 S., R. 66 W.

	<p>CHAINS</p> <p>Along center of Grashio Road.</p> <p>21.73 End of Grashio Drive, leave road; wire fence bears E. and W., continue over grassy land.</p> <p>40.02 The $\frac{1}{4}$ sec. cor. of secs. 4 and 5, marked by the original monument, a conglomerate stone, 15x10x4 ins., firmly set 12 ins. in the ground, marked $\frac{1}{4}$ on W. face.</p> <p>At the corner point,</p> <p>Set an iron post, 2 ins. diam., 30 ins. long, 27 ins. in the ground, with brass cap mkd.</p> <p>T138 R66W $\frac{1}{4}$ $\frac{S}{8}$ $\frac{5}{4}$ 1966</p> <p>Bury the old stone in hole at base of post. Corner falls in field; accessories impractical.</p>
	<p>N. 0° 01' W., beginning new measurement.</p> <p>Over grass land, sloping gradually SW.</p> <p>21.25 Center old road, bears NE. and SW.</p> <p>24.00 Top of small hill, descend westerly slope.</p> <p>36.83 Spring branch, dry, course SW., sec. gradual SW. slope.</p> <p>39.81 The corner of secs. 4, 5, 32 and 33, on the north boundary of the township.</p>
	<p>From the corner of secs. 4, 5, 8 and 9.</p> <p>S. 89° 32' W., between secs. 5 and 8.</p> <p>Over nearly level land, between residential subdivisions, through surveyed and marked building sites.</p> <p>22.78 Center of Academy Boulevard, a paved highway, bears N. 15° W. to Air Force Academy and Highway I-25 and S. 15° E. to Colorado Springs.</p> <p>40.11 The $\frac{1}{4}$ sec. cor. of secs. 5 and 8, marked by the original monument, a conglomerate stone, 17x12x4 ins., firmly set 14 ins. in the ground, marked $\frac{1}{4}$ on N. face.</p> <p>At the corner point,</p> <p>Set an iron post, 2 ins. diam., 30 ins. long, 27 ins. in the ground, with brass cap mkd.</p> <p>T138 R66W $\frac{1}{4}$ $\frac{S}{8}$ $\frac{5}{8}$ 1966</p> <p>Bury the old stone at base of iron post.</p> <p>Corner falls in area subdivided for home sites, accessories impractical.</p>


Dependent Resurvey of the Boundaries of
Secs. 5 and 6, T. 13 S., R. 66 W.

CORNER	DESCRIPTION
	S. 89° 42' W., over nearly level land, through an area of staked and improved homesites.
8.00	Street, bears N. and S.
31.30	Road, bears generally N. and S., desc. westerly slopes.
37.85	Center of track, A. T. and S. F. Railroad on curve, track bears generally NW. and S. Descend steep bank of fill.
39.65	Center of Pine Creek, 12 lks. wide, course S. 10° W., asc. gradual easterly slope.
39.85	The point for the corner of secs. 5, 6, 7 and 8, falls on steep cut bank on west side of Pine Creek, about 6 ft. above the creek bottom.
	Records of numerous surveys on file in the El Paso County Court House indicate the original monument at this corner had been tied in at various times prior to 1900. From this date to the present time many other surveys have been tied to reference points and these records indicate the original monument had been destroyed.
	In connection with the construction of a bridge or stone culvert across Pine Creek, the A. T. and S. F. Railroad acquired additional right-of-way, the southerly edge of which was on the section line bet. secs. 5 and 8. At the date of the construction of the culvert, which was in 1902, sections of steel rail were set on the section line at the point of widening of right-of-way. No actual tie was given to the corner which had been obliterated at that time.
	In 1921, in connection with the construction of improved Colorado State Highway 1, which is also U. S. Highway 85, an underpass was constructed at the crossing of the highway and the A. T. and S. F. Railroad. During the period 1920 to 1923, ties were made from State Highway surveys of the extant but now abandoned underpass and highway to the point for the corner of secs. 5, 6, 7 and 8. Field notes of these surveys indicate an acceptable point was found at the section corner but no evidence is on file showing recovery of the original monument. The position for the corner is in substantial agreement with evidence from railroad surveys.
	Prior to 1929, the Village of Breed was surveyed. Plats of the surveys of this townsite are tied to a point for the corner of secs. 5, 6, 7 and 8. There is no reference to the recovery of the original monument, but it appears an acceptable position for the corner was found. The townsite plats show this corner position in agreement with State Highway and A. T. and S. F. Railroad surveys.
	For further verification of the corner position, a tie was surveyed to the corner of secs. 7, 8, 17 and 18. This corner bears S. 0° 26' W., 79.68 chs. dist.
	It is to be noted the corners of lots and blocks in the Pine Creek Estates Subdivision to the west of this corner are in close agreement with the position for the corner of secs. 5, 6, 7 and 8, as determined from ties given above. Apparent differences in bearing are due to use of plane grid bearings rather than true bearings.
	It has been generally assumed by local surveyors that Corner B-1, Air Force Academy Boundary Survey was identi-


Dependent Resurvey of the Boundaries of
Secs. 5 and 6, T. 13 S., R. 66 W.

CORNER	DESCRIPTION
	cal with the corner of sections 5, 6, 7 and 8. A careful examination of the survey records of the boundary survey fails to produce any evidence that said boundary survey corner was intended to be the section corner, or that any monument or reconstruction of ties to reference points was made to ascertain the actual position for said section corner. The monument for corner B-1, Air Force Academy Boundary Survey has been destroyed. There is no remaining evidence of the corner position. No attempt was made to restore Corner B-1.
	At the point for the corner of secs. 5, 6, 7 and 8, at the base of a steep cut bank, in the bottom of Pine Creek,
	Set an iron post, 2 ins. diam., 2½ ft. long, 30 ins. in the ground, with brass cap mkd.
	T13S R66W S 6 S 5 S 7 S 8 1966
	From which,
	A cross in the SW. headwall of the 1902 cut stone culvert of the crossing of the A. T. and S. F. Railroad and Pine Creek, bears N. 89° 40' E., 0.76 chs. dist.
	A cross in the SE. headwall of the underpass at the crossing of U. S. Highway I-25 and the A. T. and S. F. Railroad, bears N. 3° 03' W., 3.5 chs. dist.
	A cross in old bridge pier S. 8° 14' W., 3.21 chs. dist. Cross is on third step below top of pier.
	N. 89° 51' W., between secs. 6 and 7.
	Ascend cut bank on W. side of Pine Creek.
0.25	Top of cut bank, bears generally N. and S., across graded area in old highway.
3.78	Center of East lane of Highway I-25, bears N. and S.
5.80	Center of west lane Highway I-25.
28.75	Monument Creek, 20 lks. wide, course S., asc. rolling hills sloping easterly.
40.17	Point for the ¼ sec. cor. of secs. 6 and 7, falls in cultivated land, no trace of the original corner monument remains.
	At proportionate distance
	Set an iron post, 2 ins. diam., 30 ins. long, 30 ins. in the ground, in small mound of stone, with brass cap mkd.
	T13S R66W S 6 S 7 1966
	The corner falls in cultivated land; a cedar post, 5 ins. diam., 5 ft. long, is set alongside the cor.

Dependent Resurvey of the Boundaries of
Secs. 5 and 6, T. 13 S., R. 66 W.

43.44	Center of track, Denver and Rio Grande Western Railroad, track bears NW. and SE.
52.50	Asc. more rapidly over small spurs through low brush.
57.50	Continue over rolling land.
81.24	The corner of secs. 5, 6, 7 and 12, on the west boundary of the township.
	From the corner of secs. 5, 6, 7 and 8. N. 0° 41' W., between secs. 5 and 6. Asc. steep cut bank on W. side of Pine Creek.
3.08	Center of track, A. T. and S. F. Railroad, on curve, track bears generally SE. and NW., desc. steep face of fill.
4.50	Bottom of fill, continue over nearly level grass land.
25.00	Center of abandoned paved highway, bears S. 20° W. and N. 0° 41' W., along center of abandoned road. The abandoned Village of Breed is adjacent to the old highway north and southwest of this point. Some evidence of old foundations and buildings still remain.
40.00	The $\frac{1}{4}$ sec. cor. of secs. 5 and 6, marked by the intersection of the center line of abandoned State Highway and an old fence line west of highway. This point is shown on the plat of the survey of Breed Village dated July 12, 1929, and recorded in El Paso County on July 20, of the same year. Records of the survey of State Highway No. 1, in 1905 record the recovery of this corner at that time. No description of the actual monument is included beyond the reference to the "corner stone". At the point for the corner, Set an iron post, 2 ins. diam., 30 ins. long, 29 ins. in the ground, in a collar of stones in old road, with brass cap mkd. <div style="text-align: center;">  </div>
	N. 0° 07' W., beginning new measurement. Along center line of abandoned concrete highway. The abandoned Village of Breed is situated west of the old highway. There are remains of old foundations and evidence of water and electric power lines still in existence.
7.30	Center of east lane U. S. Highway I-25, at westerly approach to principal interchange, bears generally NE. and SW. to S.
9.30	Center of west lane U. S. Highway I-25.
15.00	Enter parking lot and newly constructed road at U. S. Air Academy Museum.
16.00	Air Force Academy Museum bears W., 1.50 chs. dist.

Dependent Resurvey of the Boundaries of
Secs. 5 and 6, T. 13 S., R. 66 W.

CHAINS	
17.50	Leave parking lot, continue along east edge of newly paved access road.
40.45	The corner of secs. 5, 6, 31 and 32, on the north boundary of the township.
	Survey of the subdivision of secs. 5 and 6
	From the $\frac{1}{4}$ sec. cor. of secs. 5 and 8. N. 0° 06' W., on meridional center line of sec. 5. Through surveyed subdivision.
3.60	Cragin Road, bears E. and W.
13.90	Turner Road, bears NE. and SW.
15.90	Heath Drive, bears NW. and SE.
21.46	Burns Road, bears E. and W.
40.08	Point for the center $\frac{1}{4}$ sec. cor. of sec. 5. Set an iron post, 2 ins. diam., 30 ins. long, 24 ins. in the ground, with brass cap mkd. <div style="text-align: center;">  </div>
43.00	Academy Boulevard, bears NW. and SE.
47.72	Colorado State Highway No. 83, bears NE. to Black Forest and SW. to Jct. with Academy Boulevard.
78.20	Pine Creek, in concrete floodway, course SW.
80.20	The $\frac{1}{4}$ sec. cor. of secs. 5 and 32, on the N. boundary of the township.
	From the $\frac{1}{4}$ sec. cor. of secs. 4 and 5. S. 89° 38' W., along the latitudinal center line of sec. 5.
37.85	Academy Boulevard, bears NW. and SE.
40.16	The center $\frac{1}{4}$ sec. cor. of sec. 5.
68.76	Pine Creek, course S., dry at this point.
70.35	Air Force Academy Boundary fence, bears S. and NE.
70.42	Air Force Academy Boundary survey marker B-6, marked by a bronze tablet set in concrete cylinder, bears N., 21 lks. dist. This monument is a witness point, offset an unknown distance from the true point
80.41	The $\frac{1}{4}$ sec. cor. of secs. 5 and 6.
	From the $\frac{1}{4}$ sec. cor. of secs. 6 and 7.

CERTIFICATE OF SURVEY

I, Leonard W. Murphy, Cadastral Surveyor, HEREBY CERTIFY upon honor that, in pursuance of special instructions bearing date of the 23rd day of March, 19 66, I have made a dependent resurvey of the boundaries and partial subdivision of sections 5 and 6, T. 13 S., R. 66 W.,

of the Sixth Principal Meridian, in the State of Colorado, which are represented in the foregoing field notes as having been executed by me and under my direction; and that said survey has been made in strict conformity with said special instructions, the Manual of Instructions for the Survey of the Public Lands of the United States, and in specific manner described in the foregoing field notes.

May 17, 1966
(Date)

Leonard W. Murphy
(Cadastral Surveyor)
Leonard W. Murphy

(Date)

(Cadastral Surveyor)

CERTIFICATE OF APPROVAL

SUBMITTED FOR APPROVAL
Date May 23 1966

BUREAU OF LAND MANAGEMENT,
Washington, D. C.

The foregoing field notes of the dependent resurveys and partial subdivision of sections 5 and 6, T. 13 S., R. 66 W.,

executed by Leonard W. Murphy, Cadastral Surveyor having been critically examined and found correct, are hereby approved.

JUN 13 1966
(Date)

Ed. Livingston
(Chief, Division of Engineering)

CERTIFICATE OF TRANSCRIPT

I CERTIFY That the foregoing transcript of the field notes of the above-described surveys in _____ is a true copy of the original field notes.

(Date)

(Chief, Division of Engineering)

ORIGINAL

Form 9180-6
(April 1965)
(Revisory 4-679)

UNITED STATES
DEPARTMENT OF THE INTERIOR
BUREAU OF LAND MANAGEMENT

169

FIELD NOTES

DEPENDENT RESURVEY

OF

A PORTION OF THE

SUBDIVISIONAL LINES

AND

A SURVEY OF

PARTIAL SUBDIVISION OF

SECTION 21, TRACT 37

TOWNSHIP 5 SOUTH, RANGE 77 WEST

Of the SIXTH PRINCIPAL Meridian,

In the State of COLORADO

EXECUTED BY

JAMES P. SCOTT, CADASTRAL SURVEYOR

Under special instructions dated May 16, 19 66, which provided for the surveys
Supplemental Instructions May 25, 1966
included under Group Number 531, approved May 18, 1966
Supplemental Instructions - May 25, 1966
and assignment instructions dated May 18, 19 66.

Survey commenced May 20, 19 66

Survey completed June 3, 19 66