

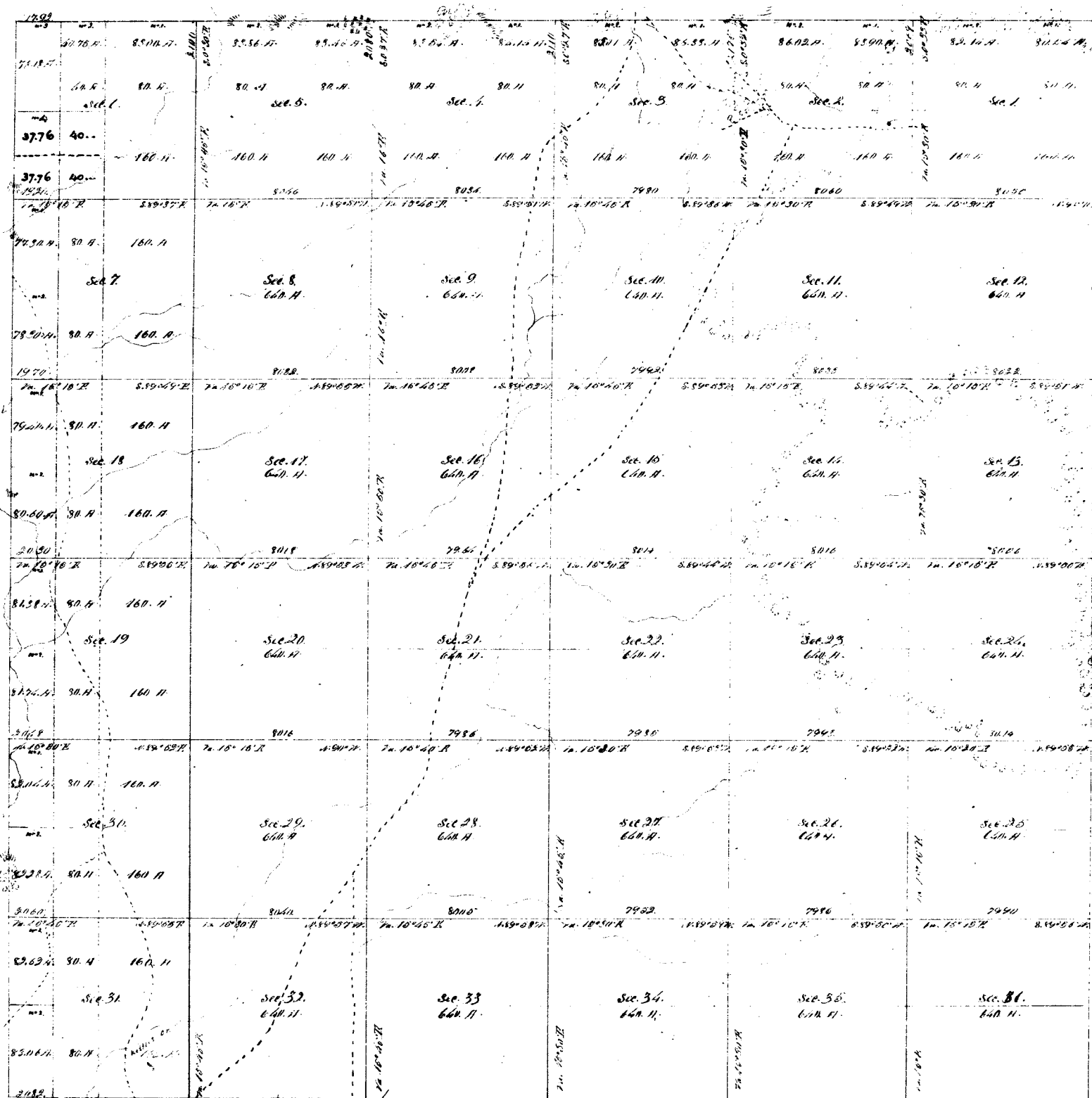
**R. L. X V. W.**

**T. X FILS.**

365  
J. M. R. R.  
Surveyor General

17 66  
T.XII.S.R.L XVI.W.

BOOK 5



23076.11 Total number P. Acres.

Survey Designated by whom surveyed	Date of Contract	Amount of Survey when Surveyed
Township, Range, Subdivisions	Alfonso H. Sheldon	Oct. 20 <sup>th</sup> 1865
	Wm. H. Ashley	May 25 <sup>th</sup> 1866
		St. Louis, Mo. July 1866
		Aug. 1866

The above Map of Township 17 North, Range 66 West, of the sixth Principal Meridian in Colorado, is strictly conformable to the field notes of the survey thereof in file in this Office, which has been examined and approved.

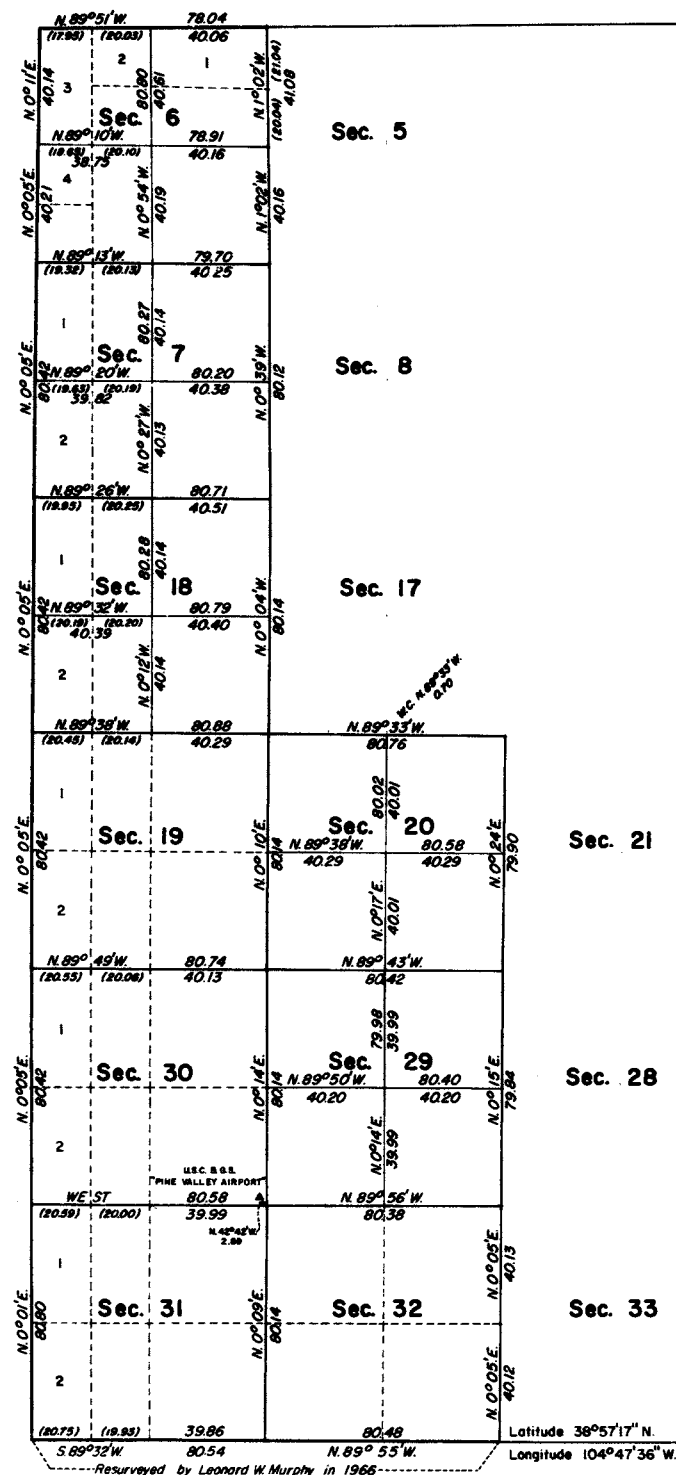
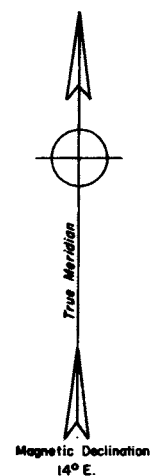
Surveyor General's Office

Denver, Sep. 14<sup>th</sup> 1866

John P. Jones

# TOWNSHIP 12 SOUTH, RANGE 66 WEST OF THE SIXTH PRINCIPAL MERIDIAN, COLORADO

## DEPENDENT RESURVEY



Surveyed by  
**Wm. Ashley**  
in 1866

This plat represents a retracement and reestablishment of the west boundary and portions of the north boundary and subdivisional lines, designed to restore the corners in their true original locations according to the best available evidence, and, a survey of the subdivision of certain sections, T. 12 S., R. 66 W., Sixth Principal Meridian, Colorado.

The lottings and areas are as shown on the plat approved September 14, 1866.

The surveys were executed by Frank W. Rogers, Cadastral Surveyor, beginning October 11, and completed December 12, 1966, pursuant to Special Instructions for Group No. 540-5, Colorado, dated October 5, 1966.

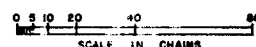
UNITED STATES DEPARTMENT OF THE INTERIOR  
BUREAU OF LAND MANAGEMENT  
Washington, D. C.      November 1, 1967

This plat is strictly conformable to the approved field notes, and the survey, having been correctly executed in accordance with the requirements of law and the regulations of this Bureau, is hereby accepted.

For the Director

*R. E. Brown*

Acting Chief, Division of Engineering



Area resurveyed: 5,761.17 Acres

1040

## UNITED STATES DEPARTMENT OF THE INTERIOR

PAGE 1

## BUREAU OF LAND MANAGEMENT

COLORADO

## RECTANGULAR SURVEY INDEX

PRINTED: 02/24/76

BOUNDARY	TOWNSHIP 12 VOLUME	SOUTH INTRODUCTION		RANGE 66 SURVEY		WEST CERTIFICATE		TYPE CONTRACT	ISSUED OR	- SIXTH PRIN MER SURVEY			SURVEYOR OR REMARKS
		FROM	TO	FROM	TO	FROM	TO			OR GROUP	APPROVED	YEAR	
NORTH	RL	89	89	99	100	246	251	ORG		10/20/1864	1865	09/26/1865	A L SHELTON
NORTH	RL	89	89	173	178	246	251	ORG		10/20/1864	1865	09/26/1865	A L SHELTON
NORTH	R0496	715	719	723	724	739	740	RES		01/11/1934	1934	03/13/1934	J TUFTS
NORTH	R0496	715	719	728	729	739	740	RES		01/11/1934	1934	03/13/1934	J TUFTS
NORTH	R0487	571	573	577	578	591	592	RES	540	10/11/1966	1966	11/01/1967	F ROGERS
SOUTH	RD	241	242	294	294	326	332	ORG		05/31/1862	1862	07/09/1862	W PIERCE
SOUTH	RL	89	89	92	97	246	251	ORG		10/20/1864	1865	09/26/1865	A L SHELTON
SOUTH	RL	89	89	98	98	246	251	RES		10/20/1864	1865	09/26/1865	A L SHELTON
SOUTH	R0487	153	155	156	160	167	168	RES	532	04/01/1966	1966	06/08/1966	L MURPHY
EAST	RD	241	242	294	294	326	332	ORG		05/31/1862	1862	07/09/1862	W PIERCE
EAST	RL	89	89	98	100	246	251	ORG		10/20/1864	1865	09/26/1865	A L SHELTON
EAST	RU	216	217	224	225	317	320	RES		05/25/1866	1866	09/14/1866	W ASHLEY
EAST	RU	263	264	308	308	317	320	RES		05/25/1866	1866	09/14/1866	W ASHLEY
EAST	RU	263	264	313	314	317	320	RES		05/25/1866	1866	09/14/1866	W ASHLEY
EAST	R0496	715	719	723	724	739	740	RES		01/11/1934	1934	03/13/1934	J TUFTS
WEST	RL	89	89	93	94	246	251	ORG		10/20/1864	1865	09/26/1865	A L SHELTON
WEST	RL	89	89	171	174	246	251	ORG		10/20/1864	1865	09/26/1865	A L SHELTON
WEST	RU	216	217	251	252	317	320	RES		05/25/1866	1866	09/14/1866	W ASHLEY
WEST	R0496	715	719	728	729	739	740	RES		01/11/1934	1934	03/13/1934	J TUFTS
WEST	R0487	153	155	156	157	167	168	RES	532	04/01/1966	1966	06/08/1966	L MURPHY
WEST	R0487	571	573	574	577	591	592	RES	540	10/11/1966	1966	11/01/1967	F ROGERS
SUBDIVISION	RU	216	217	217	262	317	320	ORG		05/25/1866	1866	09/14/1866	W ASHLEY
SUBDIVISION	R0487	571	573	578	586	591	592	RES	540	10/11/1966	1966	11/01/1967	F ROGERS
SUBDIVISION	R0487	571	573	587	589	591	592	ORG	540	10/11/1966	1966	11/01/1967	F ROGERS



*Field notes*

*of*  
the surveys of the Eastern  
Lines of townships 13. 14. 15.  
16. 17. 18. 19 and 20 South of  
Range 65 West and townships  
14 and 15 South of Range 66  
West of the Sixth Principal  
Meridian

# Names and duties of the Survey Party

Wm H. Pierce } Compassman

George A. Billings }  
Hilington C. Ashley } Chainmen

Caleb S. Bunsal }  
Duncan Campbell } Cornermen

Redwood Fisher } Flagman

W. B. 20 S. 12. 65 N

Commenced at the South West  
corner of township 20 South of  
Range 65 West of the Sixth  
Principal meridian and ran  
North on a true line

13.80 Road Course East

28.20 Edge of bluff 30 feet high

40.00 Set a cottonwood post with  
mound and chained stake for  $\frac{1}{4}$  sec. cor.

73. Right bank of the Arkansas R.

73.80 Left bank of the Arkansas River

June 13<sup>th</sup> 1862

80. Set cottonwood post with mound  
and chained stake for corner to  
sections 23, 30, 31 and 36

Sections 31 and 36 lie principally  
in the valley of the Arkansas R.

Land 7<sup>th</sup> sale

Variation 14° East

From this corner 3 chains West  
is a conical hill 70 or 80 ft  
high

40.00 Set cottonwood post with mound and charred stake for  $\frac{1}{4}$  sec. corner  
 80.00 Set cottonwood post with mound and charred stake for corner to sections 16.7 & 12  
 Open prairie Grass good  
 Land 2<sup>nd</sup> rate

40.00 Set cottonwood post with mound and charred stake for  $\frac{1}{4}$  sec. corner  
 43.00 Dig gully Corner North 70° West  
 49.00 Center of a deep gully  
 Bank 20 to 30 ft. high  
 Running water Corner S.W.  
 80.00 Set cottonwood post with mound and charred stake for the North West corner of township 13 South Range 83 West One mile North to pin woods

Land 2<sup>nd</sup> rate

From this corner run East on a random line

481.38 Crossed the Eighth Guide Meridian 1.08 chains South of the North East corner of township 13 South Range 63 West from which corner run West on a true line

40. Set cottonwood post with mound and charred stake for  $\frac{1}{4}$  sec. cor.  
 Pool of rain water near this corner  
 80. Set cottonwood post with mound and charred stake for corner to sections 1.2.33 and 36  
 Rolling prairie Land 2<sup>nd</sup> rate

40. Set cottonwood post with mound and charred stake for  $\frac{1}{4}$  sec. cor.  
 45.40 Road from Denver to Pueblo  
 Corner South 10° West

We hereby certify that we have  
 assisted John & William A.  
 Pierce Deputy Surveyors in sur-  
 veying the Extension South of the  
 Eighth Guide Meridian West from  
 the Third to the Fourth Corner  
 Line South. Thirty miles. The fourth  
 Standard Parallel South from the  
 Eighth Guide Meridian West twenty  
 four miles. and the exterior  
 lines of Townships 13. 14. 15. 16. 17. 18.  
 19. & 20 South of Range 65 West  
 and Townships 14 & 15 South of  
 Range 66 West of 6th Principal  
 Meridian. And that Standard  
 and Township lines have been  
 in all respects to the best of  
 our knowledge & belief well and  
 faithfully surveyed and the  
 boundary monuments placed ac-  
 cording to the instructions furnished  
 by the Survey General



Frederick J. Oberly }  
 Arlington Ashby } Chairman  
 George A. Billing }

Redwood Fisher }  
 L. J. Purdell }  
 Duncan Campbell }

Subscribed and sworn to by  
 the above named persons before  
 me a Notary Public for the  
 County of Colorado in the Territory  
 of Colorado This 2<sup>d</sup> day  
 of May A.D. 1862

E. M. Ashley  
 Notary Public for  
 Colorado C.

We John Price and William A. Price  
 Deputy Surveyors do solemnly swear that  
 in pursuance of a contract with Genl.  
 C. S. Meade Surveyor of the Public Lands  
 of the United States in the Territory of Colorado  
 bearing date the 31<sup>st</sup> day of May A.D. 1862  
 and in strict conformity to the laws of  
 the United States and the instructions pro-  
 vided by the said Surveyor General we  
 have faithfully surveyed The Eighth  
 Meridian West of the 6<sup>th</sup> Principal Meridian  
 between the 3<sup>d</sup> and 4<sup>th</sup> Standard Parallels  
 north. The 4<sup>th</sup> Standard Parallel from  
 the 8<sup>th</sup> Guide Meridian West 2<sup>nd</sup> Sec.  
 and the Eastern line of Townships 13  
 14 15 16 17 18 19 & 20 South of Range  
 65 West and Townships 14 & 15 South  
 of Range 66 West of 6<sup>th</sup> Principal  
 Meridian in the Territory of  
 said and do further solemnly  
 swear that the foregoing are the  
 true and original field

notes of such survey

John Pierce & John  
W. Pierce Surveyors

Subscribed by the said John  
and William H. Pierce  
and sworn to before me  
a Notary Public for Annapolis  
County in the County of Prince  
George's the 9th day of July 1862  
Edw. Ankley  
Notary Public  
for Annapolis, Co.

Surveyor General's Office at  
Annapolis City, C. T. July 9. 1862

The foregoing field notes of the  
survey of the 8th Civil Meridian  
between the 3<sup>rd</sup> & 4th Standard Parallels  
South. The 4th Standard Parallel  
met from the 8th Civil Meridian  
24 miles and the Extension line  
of the 12. 14. 15. 16. 17. 18. 19 & 20 S. of  
Range 65 West. and the 14 & 15  
South of Range 66 West of 6th  
Civil Meridian as Executed by  
John & William H. Pierce and  
their contract of May 31<sup>st</sup> 1862  
In the month of June & July  
1862 having been carefully exam-  
ined the necessary Corrections and  
Explanations made the said field  
notes and the Survey they describe  
are hereby approved

August 1862  
George H. Mays

## Index to Dinos

H. N. line of I. S. R. 66 H.	Page	1612
do 4 . . . .	"	15-22
do 3 . . . .	"	23-31
do 2 . . . .	"	35-45
<del>H. N.</del> line 1 . . . .	"	44-47
H. N. 5 . . . 68 H.	"	46-75
do 5 . . . 69 "	"	76-84
do 4 . . . 68 "	"	86-95
do 4 . . . 69 "	"	98-105
do 3 . . . 68 "	"	106-114
do 8 . . . 69 "	"	115-127
do 2 . . . 68 "	"	128-137
H. line 1 . . . 68 "	"	138-148
H. & N. line. 5 S. R. 65 .	"	155-161
do 4 S. R. 65 .	"	161-166
do 3 . . . 65 "	"	166-170
do 2 . . . 65 "	"	171-179
H. line 1 . . . 65 "	"	177-178
H. & N. line 1 H. . 65 .	"	178-185
do 2 . . . 65 "	"	184-188
do 3 . . . 65 .	"	189-195

## Index to Dinos

H. N. line I. S. R. 67 H. P	193-199
do 4 " . 67 . .	199-205
do 3 " . 67 . .	205-210
do 2 " . 67 . .	210-216
H. line 4 " . 67 . .	216-221
H. & N. line 20 S. . 65 H. .	242-249
do 19 " . 65 " .	250-255
do 18 " . 65 " .	258-262
do 17 " . 65 " .	263-269
H. line 16 . . . 65 .	274-277
H. & N. line 15 " . 65 .	278-284
do 14 " . 65 " .	285-291
do 13 . . . 65 .	292-298
do 15 . . . 66 .	299-305
do 14 . . . 66 .	310-319

48  
and sworn to before me, a  
Justice of the Peace for the County  
of El Paso in the Territory of Col-  
orado, This 8<sup>th</sup> day of July 1865.

James Roberts  
Justice of the Peace

Surveyor General's Office  
July 12<sup>th</sup> 1865 - Denver

The foregoing field notes of the survey  
of the exterior lines of the 19<sup>th</sup> & 20<sup>th</sup> R. 69<sup>th</sup>  
W. of the 19<sup>th</sup> S. R. 70<sup>th</sup> W. executed  
by Alvin S. Sheldon under his con-  
tract of 20<sup>th</sup> Oct. 1864, having been crit-  
ically examined the necessary cor-  
rections and explanations made the  
said field notes and the surveys they  
describe are hereby approved.

Surveyor General of  
Colorado etc.

59  
Field-Notes  
of  
The Survey of the Exterior Lines  
Boundaries of  
Townships 6, 7, 8, 9, 10, 11 & 12 S.  
of Range 65 W.; Townships 6, 7, 8, 9,  
10, 11, 12 & 13 S. of R. 66 W.; Townships  
6, 7, 8, 9 and Fractional Townships  
10, 11, 12 & 13 S. of R. 67 W.; Township  
6 and Fractional Townships 7,  
8 & 9 S. of R. 68 W.; And Fractional  
Townships 6 and 7 S. of R. 69 W.  
of the 6<sup>th</sup> Principal Meridian  
in the Territory of  
Colorado

by  
Alvin S. Sheldon  
Deputy Surveyor  
Under his Contract, dated  
October 20<sup>th</sup> 1864.

Work commenced Dec. 1<sup>st</sup>  
1864 and finished July  
28<sup>th</sup> 1865.



## West Boundary S. 13 S of R. 66 W

6<sup>th</sup> Principal Meridian

- 0.80 Red Rock Cr. 5 links wide, runs S 88° E.  
 15.00 Several springs in this neighborhood.  
 35.00 Bluff 10 ft high, bears N 80° E & S 30° W  
 40.00 Set 1/4 Sec. Cor. Granite 16 x 10 x 4  
 43.00 Several bluff, bears N. W. & S. E.  
 48.00 Laughlin Creek, 5 links wide, runs S. E.  
 64.00 Bluff bears N 75° W & S 75° E  
 80.00 Set Cor. to Sec. 24, 20, 19 & 30  
 Granite 15 x 10 x 7

Land same

North on a true line between Secs 24 & 19  
 Var. 15° 03' E.

- 24.00 Sandstone bluff, 15 ft high, bears S 80° W  
 and North  
 40.00 Set 1/4 Sec. Cor. Sandstone 20 x 12 x 3  
 49.00 Coal blossom 8 ft thick.  
 55.00 Center of deep gulch, bears S 80° E.  
 78.00 Center of gulch, bears S 60° E.  
 80.00 Set corner to sections 13, 24, 18 & 19  
 Sandstone 30 x 10 x 5  
 Land broken and worthless.  
 Timber Pine and spruce of poor quality  
 Undergrowth Oak & hawthorn

## West Boundary S. 13 S of R. 66 W

6<sup>th</sup> Principal Meridian

North on a true line between sections 18 & 19  
 Var. 15° 03' E

- 39.00 Center of gulch, bears from S. W. to S. E.  
 40.00 Set 1/4 Cor. Granite 20 x 14 x 3  
 80.00 Set corner to sections 12, 13, 7 & 18  
 Granite 18 x 14 x 6

Land more level, 2nd rate

North on a true line between Secs 7 & 10  
 Var. 15° 03' E.

- 32.00 Ravine, runs S. 60° E.  
 40.00 Set 1/4 Sec. Cor. Granite 20 x 14 x 3  
 55.00 Colorado City and Denver road, bears  
 N 60° E & S 20° W. Top of ridge, bears S 60° E  
 80.00 Set corner to section 6, 7, 1 & 10  
 Granite 18 x 14 x 5  
 Land broken, 3rd rate  
 Timber Scrubby pines; under-  
 growth Oak & hawthorn

North on a true line between Secs 1 & 6  
 Var 15° 03' E

- 28.75 Center of gulch, bears E. & W.  
 38.00 Top of ridge, bears E. & W.  
 40.00 Set 1/4 Sec. Cor. Granite 20 x 12 x 6

West Boundary of 13 S. of R. 66 W.

6<sup>th</sup> Principal Meridian

4500 Center of Gulch, bears N 75° E

5000 Top of Ridge, bears E. &amp; W.

6770 Monument Cr. 30 ft wide, runs S. E.

8000 Set Corner to townships 12 and 13

South of Ranges 66 and 67 West

Granite 18 x 10 x 4

Land mostly broken; 3<sup>rd</sup> rateTimber scattering pines and scrub  
oaksMay 23<sup>rd</sup> 1868

North Boundary of 13 S. of R. 66 W.

From the Established Cor. to townships

12 and 13 South of Ranges 66 and  
67 West & runEast on a random line between  
said townships the variation of my  
instrument, being for each mile

respectively, 15° 03' E, 15° 08', 15° 03', 15° 03'

14° 36', 14° 36' E. Set temporary  
half-mile and mile stones at 400  
and 8000 ChainsI find the Township line to be  
six miles and 84 links and the

North Boundary of 13 S. of R. 66 W.

6<sup>th</sup> Principal Meridianfalling to be 187 links South of  
the Township Corner.The Correction for the true line will  
therefore be 82 links West and  
18.6 links North per mile.From the Corner of Townships  
12 and 13 South of Ranges 65 and  
66 West I run889° 54' W on a true line between  
Sections 1 and 36

Var 14° 36' E.

4000 Set 1/4 Sec. Cor. Granite 18 x 10 x 8

8000 Set Corner to Sections 35, 36, 1 &amp; 2

Granite 16 x 10 x 4

Land, rolling prairie 2<sup>nd</sup> rate889° 54' W. on a true line between Secs  
Two 35 and 2

Var 14° 36' E

4000 Set 1/4 Sec. Cor. Granite 18 x 9 x 6

8000 Set Corner to Sections 34, 35, 3 &amp; 4

Sandstone 16 x 11 x 4

Land, same

889° 54' W on a true line between

North Boundary 2/3 S. of R. 66 W.

6<sup>th</sup> Principal Meridian

Sections 34 and 3

Var. 15° 03' E

40.00 Set 1/4 Sec. Cor. Sandstone 14 x 12 x 3

80.00 Set corner to Sections 33, 34, 35 & 4  
Sandstone 17 x 9 x 4

Land the same

889° 54' W. on a true line between  
33 and 34

Var. 15° 03' E.

40.00 Set 1/4 Sec. Cor. Sandstone, 15 x 12 x 3

78.20 Spring branch, 2 links wide, bears S 15° W

80.00 Set corner to Sections 32, 33, 34 & 35

Sandstone 16 x 8 x 5

Land the same.

889° 54' W. on a true line between  
Sections 32 and 35

Var. 15° 03' E

10.82 Road, bears S. 30° E.

40.00 Set 1/4 Sec. Cor. Sandstone 12 x 9 x 5

40.17 Ravine, bears South

78.80 Stop Road, bears S 20° W

80.00 Set corner to Sections 31, 32, 33 & 34

Sandstone 12 x 9 x 5

North Boundary 2/3 S. of R. 66 W.

6<sup>th</sup> Principal Meridian

Land the same

889° 54' W. on a true line between  
Sections 31 and 6

Var. 15° 03' E.

26.80 Plum Creek road, bears S 15° E & N 15° W

40.00 Set 1/4 Sec. Cor. Granite 16 x 7 x 7

40.80 Kellie's Creek, 10 links wide, bears S 15° E

80.82 to the Township corner.

Land the same.

General Description

This township has only little land  
which is available for cultivating  
a narrow belt margining the West  
side of Monument Creek. Even  
draining it all. There are indi-  
cations of Coal on Sections 19, 27,  
and 30. Iron ore is found on  
Section 16. The eastern part of  
the township is excellently ad-  
apted to grazing.

## West Boundary S 12 S of R. 68 W.

6<sup>th</sup> Principal Meridian

Begin at the mound, the established corner to townships 42 and 43 S of Ranges 68 and 66 West and run North on a true line between sections 36 and 31

Var 14° 24' E

240.00 Set 1/4 Sec. Cor. Iron Stone 16 x 14 x 4

80.00 Set Corner to Sections 28, 36, 30 &amp; 31

Iron Stone 16 x 18 x 4

Land prairie, gently rolling, 2<sup>nd</sup> rate

North on a true line between sections 28 &amp; 30

Var. 14° 24' E

40.00 Set 1/4 Sec. Cor. Granite 16 x 9 x 5

80.00 Set post in mound as per instructions.

Turns for Cor to sections 24, 25, 29 &amp; 30

Land the same.

North on a true line between Secs 24 &amp; 29

Var. 14° 24' E

18.00 Enter Timber, bears S.W. and S. 68° E.

40.00 Set 1/4 Sec. Cor. 16 x 14 x 4

Pin two 20 in. in diameter at right angles

58.00 Enter Prairie, bears N. 68° W. &amp; S. 68° E.

71.00 Enter Timber, bears S.W.

## West Boundary S 12 S of R. 68 W.

6<sup>th</sup> Principal Meridian

80.00 Set corner to sections 18, 19, 13 &amp; 24

Sandstone 18 x 9 x 4

Land rolling 3<sup>rd</sup> rate

Timber fair pine &amp; hard woods

North on a true line, between Secs 18 &amp; 18

37.25 Var. 14° 24' E

Kettle's Creek, 10 links wide, runs West

40.00 Set 1/4 Sec. Cor. Sandstone 16 x 10 x 6

62.80 Creek, 10 links wide runs S.W.

66.85 Creek runs S.E.

67.70 " " S. 15° W.

80.00 Set Cor to sections 12, 13, 7 &amp; 18

Sandstone 16 x 9 x 7

Land and timber the same

May 24<sup>th</sup> 1868

North between sections 12 &amp; 7

Var. 14° 24' E

40.00 Set 1/4 Sec. Cor. Sandstone 16 x 11 x 6

80.00 Set corner to sections 1, 12, 6 &amp; 7

Sandstone 18 x 9 x 5

Land and timber the same

North on a true line between Secs 1 &amp; 6

Var 14° 37' E

## West Boundary S. 12 S of R. 65 W

6<sup>th</sup> Principal Meridian

4000 Set 1/4 Sec. Cor. Sandstone 14x12x3  
 70.30 Same Timber, trans N 30 W + N.E.  
 8000 Set corner to Townships 11 and 12 S.  
 of Ranges 65 and 66 W. Sandstone  
 15x8x6. This stone is on the sum-  
 mit of the "Divide."  
 Sand and timber the same

From the corner to Townships 11  
 and 12 South of Ranges 65 and 66  
 West I run

East on a random line between  
 said townships, the variation of my  
 transit being for each mile respec-  
 tively, 14°38'E 14°38'E 14°46'E 14°46'E  
 14°15'E and 14°00'E. I set temporary  
 half-mile and mile posts at 4000  
 and 8000 chains.

I find the Township line to be 6  
 miles, 1 Chain and 62 links, and  
 the the falling to be 3 chains and  
 47 links South of the Township  
 corner.

The correction for the true line

## North Boundary S. 12 S of R. 65 W

6<sup>th</sup> Principal Meridian

1 chain and 62 links east and  
 and its bearing S 89°35' W.

From the corner to Townships  
 11 and 12 South of Ranges 64  
 and 65 West I run

S 89°35' W. on a true line between Sec-  
 tions 36 and 1

Var 14°00'E

4000 Set 1/4 Sec. Cor. a post from which  
 A pine 18 in. dia. trans N 65°08' 267 links  
 A Pine, 6 in dia. trans S 70°21' W 228 links

8000 Set a post for corner to Sections 35  
 36, 1 & 2 from which  
 A Pine 18 in. dia. trans S 88°25' W, 21 links,  
 A Pine 17 in. dia. trans S 89°44' W, 33 links  
 A Pine 7 in. dia. trans N 47°00' E, 48 links dist  
 A Pine 10 in. dia. trans N 44°25' W 104 links dist  
 Sand rolling with good soil  
 Timber Pine

S 89°35' W. on a true line between Sec-  
 tions 35 and 2

Var. 14°15'E.

4000 Set 1/4 Sec. Cor. a post from which



West Boundary T. 6 S. of R. 66 W.

6<sup>th</sup> Principal Meridian

along the Creek; undergrowth Willow  
Plum and Cherry

North on a true line between sec-  
tions 12 and 7

Var. 15° E.

- 4.00 Top of rise from Creek, bears N. 80° E. 48.80 W.  
40.00 Set 1/4 Sec. Corner; Granite 14 x 11 x 5  
78.80 Run, bears N. E.  
80.00 Set Corner to sections 1, 12, 6 & 7  
Granite 18 x 8 x 6

Land the same

North on a true line between sec-  
tions 1 and 6

Var. 15° E.

- 40.00 Set 1/4 Sec. Cor. Granite 15 x 10 x 3  
82.71 Intersect the 1<sup>st</sup> Standard Parallel  
South, 233 links west of the set-  
tled Corner to Townships 5 South  
of Range 66 and 67 West. Set a  
Granite stone at the point of intersec-  
tion for Corner to Townships 8 South  
of Range 66 and 67 West.

West Boundary T. 14 S. of R. 66 W.

6<sup>th</sup> Principal Meridian

From the corner to Townships  
12 & 13 South of Range 66 & 67 W. Run  
North on a true line between  
sections 36 and 31

Var. 15° 08' E.

- 33.00 Road, bears N. 15° E. 48.15 W.  
40.00 Set 1/4 Sec. Cor. Granite 16 x 11 x 4  
80.00 Set Corner to sections 25, 36, 30 & 31  
Granite 16 x 9 x 5

Land rolling prairie, sandy, 2<sup>nd</sup> rate

North on a true line between  
sections 25 and 30

Var. 15° 08' E.

- 12.00 Ascend bluff, 60 feet high; enter  
Pine grove; they bear N. E. 48.15 W.  
28.00 Leave pine grove, bears S. 10° E. 48.15 W.  
Ascend bluff, bears N. 20° W. 48.20 E.  
28.00 Ascend bluff, bears N. 30° E. 48.  
40.00 Set 1/4 Sec. Cor. Granite 18 x 8 x 4  
48.00 Monument Creek, bears N. 10° E. 48.25 W.  
51.00 Same Monument Creek, 10 links side  
70.00 Run in Monument Creek, cross from  
S. 60° E. high bluff with pines.

West Boundary S. 1/2 S. of R. 66 W.

6<sup>th</sup> Principal Meridian

80.00 Set corner to sections 24, 25, 19 &amp; 20

Granite 16 x 8 x 6

Land broken, 3<sup>rd</sup> rateNorth on a true line between  
sections 24 and 19

Var. 15° 03' E.

16.00 Point of bluff with Pine, trans N. 44 W.

20.00 Saw bluff trans from S. to N. W.

26.00 Stream 3 links wide, runs S. 70° E.

28.00 Second bluff, trans N. W. 44 E.

30.00 Break in Monument Creek, runs from  
N. E. to S. E.

40.00 Set 1/4 sec. Cor. Granite 16 x 8 x 6

46.00 Monument Creek, runs from N. W. to S. E.

64.00 200 200 runs East to West

80.00 Set corner to sections 13, 24, 18 &amp; 19

Granite 16 x 10 x 7

Land the same. Timber Pine, under-  
growth Willow, Oak, Chama.North on a true line between sec-  
tions 13 and 18

Var 15° 03' E.

0.00 Point of bluff, trans S. 70° E. 80 W.

West Boundary S. 1/2 S. of R. 66 W.

6<sup>th</sup> Principal Meridian

17.50 Monument Creek, trans N. 15 W. 44 E.

22.00 Bluff, trans N. W. 44 E.

24.00 Set 1/4 sec. Cor. Granite 17 x 10 x 3

74.00 Chalybeate stream, 3 links wide, runs S. W.

79.00 Saw scattering pines, trans N. E. 44 W.

80.00 Set corner to sections 12, 13, 7 &amp; 18

Granite 17 x 13 x 3

Land and timber the same

North on a true line between  
sections 12 & 7

Var. 15° 03' E.

40.00 Set 1/4 sec. Cor. Granite 16 x 9 x 4

44.50 Colorado City &amp; Brown road, trans N. 44 W. 44 E.

64.00 Second bluff, 50 feet high, trans N. 44 W. 44 E.

72.00 Stream, 4 links wide, runs S. 80 W.

80.00 Set corner to sections 1, 12, 6 &amp; 7

Granite 20 x 9 x 4

Land south 66 chains rolling prairie  
3<sup>rd</sup> rate remainder land the sameNorth on a true line between  
sections 1 and 6

Var 15° 03' E.

0.00 Second bluff, 50 feet high.

North Boundary  $\frac{1}{2}$  Sec. 12 of R. 66 W.

6<sup>th</sup> Principal Meridian

10.00 Top of hill, bears N. 88° 45' E. 100 W.  
 40.00 Set  $\frac{1}{4}$  Sec. Cor. Granite 15 x 10 x 5.  
 80.00 Set Corner to Townships 11 & 12  
 South of Range 66 & 67 West  
 Granite 24 x 9 x 4.  
 Land undulating prairie; 3<sup>rd</sup> rate.  
 July 10<sup>th</sup> 1865

From the Corner to Townships 11 & 12  
 South of Range 66 and 67 West I run  
 East on a random line between said  
 Townships the variation of my  
 transit being very fluctuating. I make  
 notes of the variations aside from my  
 field book and measure them to be com-  
 pared with my return line. I set ten  
 for my half-mile and mile stones  
 at 40.00 and 80.00 Chains  
 I find the Township line to be 5  
 miles 77 Chains and 92 links and  
 the falling to be 25 links south of the  
 Township Corner

The correction for the true line will  
 therefore be 25 links West and its bearing

North Boundary  $\frac{1}{2}$  Sec. 12 of R. 66 W.

6<sup>th</sup> Principal Meridian

S 89° 59' W.

From the Corner to Townships  
 11 & 12 South of Range 66 & 67 West I run  
 S 89° 59' W. on a true line between  
 sections 36 & 41

Var. 14° 36' E.

1.00 Enter timber, bears N. W. & E.  
 40.00 Set a post for  $\frac{1}{4}$  Sec. Cor. from which  
 A Pine, 12 in. dia. bears N. 41° 30' W. 25 links dist  
 A Pine, 14 in. dia. bears S. 3° E. 6 links dist  
 80.00 Set Corner to sections 35, 36, 1 & 2  
 Sandstone 20 x 9 x 5  
 Land rolling; 3<sup>rd</sup> rate.  
 Timber Pine

S 89° 59' W. on a true line between  
 sections 35 and 2

Var. 14° 44' E.

18.70 Bare timber, bears N. 20° E. & E. 100 W.  
 38.00 Stream, 3 links wide, runs from N. 68° W.  
 44.00 Set  $\frac{1}{4}$  Sec. Cor. Sandstone 20 x 9 x 5  
 46.70 Enter Timber Road, bears N. 45°  
 48.80 Enter Timber, bears N. 80° E. & E. 60 W.  
 66.70 Ridge, bears N. 20° E. & E. 100 W.



## North Boundary S. 12 S. of R. 66 W.

6<sup>th</sup> Principal Meridian

80.00 Set corner to sections 34, 35, 2 & 3  
Sandstone 18x10x3.  
Land 25 chains including face & water,  
remainder as before  
Timber Pine; Mulberry, Oak, haw,  
Cherry and Wra Wra.

S. 89° 58' W. on a true line between  
34 and 3  
Var. 14° 44' E.

8.00 Top of a ridge, bears N. 20° E. 48.20 W.

18.90 Stream, 2 links wide, bears S 15° E.

32.00 Var. 13° 27' E.

36.95 Saw-mill road; bears N. W. 48.6. E. 48.6. W.

40.00 Set 1/4 Sec. Cr. Sandstone 17x9x6.

44.32 Mail-road bears N. 48.

48.10 Stream, 3 links wide, bears S. 10° E.

54.00 Enter timber, bears N. 48.

80.00 Set corner to sections 33, 34, 3 & 4  
Sandstone 20x9x3

Land 20 chains, including face & prairie  
3rd rate; remainder as before.

Timber Pine; Mulberry, Oak, haw,  
Cherry and Wra Wra.

## North Boundary S. 12 S. of R. 66 W.

6<sup>th</sup> Principal Meridian

S. 89° 58' W. on a true line between  
Sections 33 and 4

Var. 14° 30' E.

33.40 Var. 14° 36' E.

36.00 Top hill, bears N. 30° W. 48.30 E.

40.00 Set a post for 1/4 Sec. Cr. from which  
A Pine, 14 in. dia, bears N. 20° E. 48.30 links dist.

A Pine 14 in. dia, bears S. 89° 58' W. 9 links dist.

47.95 Same Timber, bears N. 80° W. 48.15° E.

60.00 Same Oak Thicket, bears N. W. 48. E.

80.00 Set corner to sections 32, 33, 4 & 5  
Granite 16x9x4

Land East 60 chains hilly; 3<sup>rd</sup> rate,  
remainder or smoother prairie 4<sup>th</sup> rate  
Timber Pine; Mulberry, Oak & haw.

S. 89° 58' W. on a true line between  
sections 32 and 5

Var. 14° 54' E.

3.00 Enter wet land, bears N. W. 48. E.

16.00 Same wet land, bears N. 75° W. 48.75° E.

18.10 Stream, 10 links wide, bears S 15° W.

32.00 Foot of bluff, bears N. 20° W. 48.20° E.

37.00 Top of bluff, 70 feet high,

North Boundary of T. 12 S. of R. 66 W.

6th Principal Meridian

40.00 Set 1/4 Sec. Cor. Conglomerate 16x9x5  
 42.00 20' sand bluff, 50 feet high, bears N. 85° E. +  
 52.00 Foot of bluff.  
 62.40 Top of bluff, 50 feet high, bears N. 85° E. +  
 S. 60° W. Var. 14° 8' 4" E.  
 71.40 Gulch, 230 links wide, runs south  
 80.00 Set corner to sections 31, 32, 34 & 36

Granite 16x9x4  
 Sand quite broken; 3rd rate.  
 Undergrowth oak and hawthorn.  
 S. 89° 38' W. on a true line between  
 sections 31 and 6

Var. 15° 05'  
 40.00 Set 1/4 Sec. Cor. Sandstone 20x18x2  
 77.90 To the Township corner.  
 Sand hilly, 3rd rate.  
 Undergrowth oak and hawthorn

General Description  
 This Township has valuable fine  
 lands, embracing the most of sections  
 1, 2, 3, 11, 12, 13, 14 and 24.  
 There is a saw-mill near the S.W.  
 1/4 of section 3.

Note: The boundary notes on this line are the same as on the section line.

West Boundary of T. 11 S. of R. 66 W.

6th Principal Meridian

From the corner to Townships 11  
 and 12 South of Ranges 66 and 67  
 West, Iron  
 North between sections 36 and 37  
 Var. 15° 05' E.

32.40 Stream, 5 links wide, runs from N. 85° E. S. 85° W.  
 40.00 Set 1/4 section Cor. Granite 18x9x4  
 80.00 Set corner to sections 24, 36, 38, 31  
 Granite 18x16x2

Sand hilly prairie; 3rd rate  
 Undergrowth oak and hawthorn  
 North on a true line between  
 sections 28 and 30  
 Var. 15° 05' E.

40.00 Set 1/4 Sec. Cor. Sandstone 16x11x3  
 72.00 20' sand bluff 80 feet high, bears from  
 N. 70° E. to S. 11° W.  
 78.20 From bears East and S. 65° W.  
 78.60 Ploughed ground, bears E. 4° W.  
 80.00 Set corner to sections 24, 25, 19 & 30  
 Granite 20x7x4  
 Sand rolling prairie mostly; 2nd rate  
 Undergrowth oak and hawthorn

# List of Names.

A list of the names of the individuals employed to assist in running, measuring, or marking the lines and corners described in the foregoing field notes of Townships 6, 7, 8, 9, 10, 11, & 12 S. of R. 65 W.; Townships 6, 7, 8, 9, 10, 11, & 12 & 13 S. of R. 66 W.; Townships 6, 7, 8, 9, and Fractional Townships 10, 11, 12 & 13, S. of R. 67 W.; Townships 6 and Fractional Townships 7, 8 & 9, S. of R. 68 W. and Fractional Townships 6 & 7 S. of R. 69 W. of the 6<sup>th</sup> Principal Meridian, showing the respective capacities in which they acted.

# We hereby certify that we as-

sisted Albertus J. Sheldon, deputy surveyor, in surveying the Exterior boundaries of Townships 6, 7, 8, 9, 10, 11 & 12 S. of R. 65 W.; Townships 6, 7, 8, 9, 10, 11, 12 & 13 S. of R. 66 West; Townships 6, 7, 8 & 9 and Fractional Townships 10, 11, 12 & 13 S. of R. 67 W.; Township 6 and Fractional Townships 7, 8 & 9 S. of R. 68 W. and Fractional Township 6 and 7 S. of R. 69 W. of the 6<sup>th</sup> Principal Meridian, and that said Townships have been in all respects, to the best of our knowledge and belief, well and faithfully surveyed, and the boundary monuments planted according to the instructions furnished by the Surveyor General.

R. Kenbelaw Smith Chairman  
William A. DeFrance Chairman  
Brantley Jackson Flagman

Benjamin H. Sperry  
Attest.

Subscribed and sworn to by  
the above named persons,  
before me, Deft. Comm. Clerk

for the County of Col.  
Dorr. Colorado Territory. this  
5<sup>th</sup> day of Aug A.D. 1865.  
Wm. Q. Brown

J. Albinus J. Sheldon, Deputy  
Surveyor, do solemnly swear,  
that, in pursuance of a Contract  
with John Pierce, Surveyor of  
the Public lands of the United  
States in the Territory of Colorado,  
bearing date the 20<sup>th</sup> day of Oc-  
tober 1864, and in strict con-  
formity to the laws of the United  
States and the instructions fur-  
nished by the said Surveyor  
General, I have faithfully sur-  
veyed the Exterior boundaries of  
Townships 6, 7, 8, 9, 10, 11 & 12 South  
of R. 65 W; Townships 6, 7, 8, 9, 10, 11,  
12 and 13 S. of R. 66 W; Townships  
6, 7, 8 & 9 and Fractional Townships  
10 & 11 & 12 S of R. 67 W; Townships 6,  
and Fractional Townships 7, 8 & 9  
S of R. 68 W and Fractional  
Townships 6 & 7 S. of R. 69 W of the  
6<sup>th</sup> Principal Meridian in the  
Territory aforesaid, and do further

solemnly swear that the foregoing are the true and original field notes of such survey

Albinus Z. Sheldon  
Deputy Surveyor.

Subscribed by the said Albinus Z. Sheldon, deputy Surveyor, and sworn to before me, Deputy County Clerk for the County of El Paso, Colorado Territory  
This 5<sup>th</sup> day of August 1865.  
Wm. R. Brown

Surveyor General Office  
Denver Sept 26<sup>th</sup> 1865

the foregoing field notes of the Survey of the Exterior lines or boundaries of Townships 6. 7. 8. 9. 10. 11. & 12. S. of R. 65. W. Township 6. 7. 8. 9. 10. 11. 12 & 13. S. of R. 66. W. Township 6. 7. 8. 9. and fractional Township 10. 11. 12. & 13. S. R. 67 W. Townships 6 & fractional Townships 7. 8 & 9. S. of R. 68. W. and fractional Township 6 & 7. S. R. 69. W. of the 6<sup>th</sup> Principal Meridian in the Territory of Colorado & executed by Albinus Z. Sheldon under his Contract of the 20<sup>th</sup> day of October 1864, having been critically examined the necessary corrections and Explanations made, the said field notes and the Survey they describe are hereby approved

John Pierce  
Surveyor General of  
Colorado & Utah

Field notes  
of the  
Subdivision lines of  
Township 12 S. R. 66 W.  
Surveyed by  
William Ashley

line

1

1

Territory

ad-

ass.

1

5-166.

ink

rdary

line

To,

in

Secs

1

Bairday of the Township  
I run

216-A

4-571.

Township 12 South R. 66 W.

6	261	5	249	4	241	3	233	2	225	1
263		259		248		240		232		224
7	259	8	248	9	240	10	232	11	223	12
258		257		247		239		231		222
18	256	17	246	16	239	15	230	14	222	13
256		255		245		237		229		221
19	254	20	245	21	237	22	228	23	220	24
253		253		244		236		228		219
30	252	29	243	28	235	27	227	26	219	25
251		250		243		235		226		218
31	250	32	242	33	234	34	226	35	217	36

4-1045

Field Notes of the Subdivision  
lines of Twp. 12 S. Range  
66. W. of the 6<sup>th</sup> principal  
Meridian in Colorado Territory.  
To determine the proper ad-  
justment of my compass.  
Commenced at the cor. to  
Townships 12 & 13. S. R. 65 & 66.  
W. and run N. on a blank  
line along the E. boundary  
of Sect 36.

Bearing 15° E.

40.00 The H. Lee cor

80.05 To the cor. to Secs 25 &amp; 36.

Therefore to retrace this line  
or run parallel thereto,  
my compass will remain  
at a bearing of 15° E.

From the cor. to Secs  
12, 35 & 36, on the S.  
Boundary of the Township  
I run



Apr 12. S. P. 66 W.

North between Secs 35 & 36  
 Va. 15° E.

40,000 Set a boundary stone  
 20 x 9 x 3. for 1/4 sec. cor.

8000 Set a boundary stone  
 15 x 9 x 4 for cor. to Sec  
 25, 26, 35 & 36.

Land rolling & flat  
 Vegetation Birch  
 & some rare plants line  
 between Secs 25 & 36.  
 Va. 16° 15' E.

4000 Set a Post for temp  
 only 1/4 sec. cor.

78,50 Intersect E. Boundary  
 line at a point 10 ft  
 S. of cor. to Secs 26, 35 & 36.  
 from which cor. from  
 S. 59° 56' W. on true line

39,95 Set a Post in mound  
 and charred stake for  
 1/4 sec. corner.

Apr 12. S. P. 66 W.

79,90 The cor. to Secs 25, 26, 35 & 36  
 Land gently rolling & flat  
 Vegetation Birch  
 and Buffalo grass  
 North between Secs 25 & 36.

Va. 15° 15' E.  
 99,00 Dry Prairie, course  
 S. 70° W.

4000 Set a Post in mound  
 and charred stake for 1/4 sec. cor.

8000 Set a boundary stone  
 20 x 12 x 6 for cor. to Secs  
 23, 24, 25 & 26.

Land rolling & flat  
 Vegetation Birch and  
 Buffalo grass.

6. on a random line  
 between Secs 24 & 25.  
 Va. 16° 20' E.

25-65 Enter Pine timber  
 near N. 20° W.

4000 Set a Post for temp



Yp 12. S. R. 66 W.

- 8014 rare 1/4 sec corner.  
Intersect E. Boundary  
line at a point 11/16  
N of cor to Secs 24 & 25.  
from which cor. I run  
N 89° 55' W on a true line  
4012 Set a long stone 10  
18 x 12 x 10 for 1/4 sec cor.  
8014 The cor. to Secs 23, 24, 25 & 26.  
Sand rolling 2 1/2 rate  
Timber, Pine undergrowth  
same with Oak.  
North between Secs 23 & 24  
N 15° 15' E.  
2210 Enter Pine timber back W.  
4070 Set a long stone 14 x 12 x 10  
for 1/4 sec cor. from which  
A Pine 14 in. in diameter  
bears S. 54° E. 50' lookit.  
8050 Set a long stone 14 x 12 x 10  
for cor. to Secs. 13, 14, 23 & 24  
from which

Yp 12. S. R. 66 W.

- A Pine 23 in. in diam.  
bears S. 45° W. 44' lookit  
A Pine 7 in. in diam.  
bears S. 45° E. 38' lookit.  
Sand rolling 2 1/2 rate  
Timber, Pine undergrowth same.  
On a random line  
between Secs 13 & 24  
N 15° 15' E  
4000 Set a Post for temp-  
ary 1/4 sec cor..  
8006 Intersect E. Boundary line  
at a point 24' lookit N. of  
cor. to Secs 23 & 24 from  
which cor. I run N  
89° 50' W. on a true line  
4008 Set a Post in corner  
and charred stakes for  
1/4 sec corner.  
8006 The cor. to Secs 13, 14, 23 & 24  
Sand pretty rolling. 2 1/2 rate  
Timber, Pine, undergrowth same

Gp 12, S. R. 66 W

North between Secs 13 & 14,  
Va. 15° 30' E.

- 4,56 A Pine 6 in. in diam.  
12,23 A Pine 18 in. in diam.  
34,00 A Brook, corner S.W. 10th & 11th  
40,00 Set a Sand Stone 14x10x6  
for 1/4 sec. corner from which  
A Pine 10 in. in diam.  
the bears C 15° W. 11 the dist  
A Pine 6 in. in diam.  
bears C 45° E 14 the dist.  
75,50 Road bears S 80° E.  
80,00 Set a Sand Stone 19x10x6  
for cor. to Secs 12, 13 & 14.  
from which  
A Pine 24 in. in diam.  
bears C 63° W. 48 the dist.  
A Pine 12 in. in diam.  
bears C 30° W. 64 the dist.  
Land rolling. 2nd rate  
Timber Undergrowth same  
Orange & redwood line

Gp 12, S. R. 66 W.

between Secs 12 & 13

Va. 15° 15' E.

- 40,00 Set a Post for temporary  
1/4 sec corner.  
80,22 Intersect C. Boundary line  
at a point 20 Chks S  
of cor. to Secs 12 & 13  
from which corner run  
S. 89° 34' W. on a true line  
40,11 Set a Post in mound  
and charred Stake for 1/4 sec cor.  
falls in a wet place  
80,22 The cor. to Secs 11, 12, 13 & 14  
Timber Pine  
Undergrowth same.  
North between Secs 12 & 13.  
Va. 15° 30' E.  
31,20 A Pine 16 in. in diam.  
40,00 Set a Post in mound  
41,00 and charred Stake for  
1/4 sec cor. from which  
A Pine 18 in. in diam.

Sp 12. S. R. 66 W

80.00 bears ~~N. 25° W. 23 lks dist~~  
 A Pine 12 in. in diam.  
 bears S. 62° E. 44 lks dist  
 Set a Post in mound  
 and charred stake for cor  
 to Sec 1, 2, 11, & 12, from which  
 A Pine 5 in. in diameter  
 bears N. 28° W. 23 lks dist  
 A Pine 10 in. in diam  
 bears S. 40° W. 26 lks dist.  
 A Pine 10 in in diam  
 bears S. 14° E. 55 lks dist  
 A Pine 14 in. in diam  
 bears N. 8° E. 67 lks dist  
Timber Pine undergrowth com  
 E on a random line  
 between Secs. 1, & 12.

N. 16° 30' E.

40.00 Set a Post for temporary  
 1/4 sec cor.

80.50 Intersect C. Boundary  
 at a point cor to Sec.

Sp 12. S. R. 66 W

1. & 12, from which cor  
 I run W on a true line  
 40.26 Set a Post and charred  
 stake for 1/4 sec corner at  
 A Pine 6 in. in diameter  
 bears N. 68° W. 20 lks dist.  
 A Pine 8 in. in diam  
 bears S. 15° W. 28 lks dist.  
~~Sec 15 Sec 11 & 12~~  
Timber Pine undergrowth com  
 with on a random line  
 between Sec 12.

N. 16° 30' E.

28.00 Ravine, corner S & 2° W.

30.00 New Road bears W.

37.10 A Brook, corner W.

40.00 Set a Post for temporary  
 1/4 sec cor.

80.69 Intersect N. Boundary line  
 at a point 76 lks. E of  
 cor to Sec 1, & 2, from which  
 cor I run S 33' on true line  
 40.69 Set a Post and charred stake

Sp. 12 S. R. 66 W

for  $\frac{1}{4}$  sec corner, from which  
A Pine 12 in. in diam  
bears  $N 22^{\circ} E$ , 40 lks dist.  
A Pine 4 in. in diam bears  
S  $42^{\circ} E$ , 40 lks dist.  
Land broken 3 $\frac{1}{2}$  rate  
Timber Pine.

Aug 13. <sup>th</sup> 1864

North between Secs 34 & 35;

( $N$ ,  $15^{\circ} 30' E$ ,

40.00

Set a conglomerate stone  
19X12X4 for  $\frac{1}{4}$  sec cor.

54.50

Dry Prairie course S. 60 $^{\circ}$  W.

80.00

Set a Conglomerate stone  
18X13X3 for cor to Secs  
26, 27, 34, & 35;

Land rolling. 2 $\frac{1}{2}$  rate

Vegetation Bunch and  
Buffalo grass

On a random line  
between Secs 26, & 35;

( $N$ ,  $15^{\circ} 15' E$ ,

Sp. 12 S. R. 66 W.

40.00 Set a Post for temporary  
 $\frac{1}{4}$  sec corner

41.80 Dry Prairie course S. W.

79.80 Intersect  $N$  & S. line  
at a point 24 lks S. of  
cor to Secs 25, 26, 35 & 36.  
from which cor. Run  
S  $89^{\circ} 50' W$  on a true line

39.90 Set a conglomerate stone  
20X12X3 for  $\frac{1}{4}$  sec corner

75.80 The cor. to Secs 26, 27, 34 & 35.  
Land gently rolling 2 $\frac{1}{2}$  rate  
Vegetation Bunchgrass.

North between Secs 26 & 27  
( $N$ ,  $15^{\circ} 30' E$ ,

20.60 Dry Prairie, course S. 70 $^{\circ}$  W.

40.00 Set a conglomerate stone  
17X12X3 for  $\frac{1}{4}$  sec cor.

53.00 Dry Prairie, course W.

61.50 Dry Prairie, course S. W.

80.00 Set a Conglomerate stone  
16X10X4 for cor to Secs

Gp 12 S. R 66 W

22, 23, 26, 27,  
Land rolling. 2<sup>nd</sup> rate  
Vegetation Bunch and  
Bluff grass.

On a random line  
between Secs 23 & 26,  
N 15° 15' E,

17.00 Dry Prairie, causeway N.  
40.00 Set a stone for tempo-  
rary 1/4 sec. corner.

79.93 Intersect N. & S. line at  
a point 18 ths S. of cor  
to Secs 23, 24, 25 & 26,  
from which cor. I run  
S 89° 52' W on a true line

39.96 Set a conglomerate stone  
20x9x3 for 1/4 sec. cor.

79.93 The cor. to Secs 22, 23, 24 & 25  
Land rolling 2<sup>nd</sup> & 3<sup>rd</sup> rate  
Vegetation Bunch grass  
North between Secs 22 & 23  
On 15° 30' E,

Gp 12 S. R 66 W

23.20 Dry Prairie causeway N.  
40.00 Set a conglomerate stone  
21x10x4 for 1/4 sec. cor.

63.00 Dry Prairie causeway N.  
80.00 Set a conglomerate stone  
20x9x3 for cor. to Sec.  
14, 15, 22, & 23,

Land rolling 3<sup>rd</sup> rate  
Vegetation Bunch grass  
On a random line  
between Secs. 14 & 23

On 15° 15' E

16.00 Entry Pine timber base cr. N.

31.50 Dry Prairie, causeway N.

40.00 Set a Post for tempo-  
rary 1/4 sec. cor.

51.50 Dry Prairie, causeway N. 20° W

80.16 Intersect N. & S. line at a  
point 15 ths S. of cor. to  
Secs. 13, 14, 22 & 24 from  
which cor. I run S 89°  
54' W on a true line



Yp 12 S. Rec W.

- 4408 Set a Post in mound  
and charred stake for  
1/4 sec. corner from a hill  
A Pine 4 in. in diam.  
bears CV. 15° E. 17 lks dist
- 80,16 The car to Secs 14, 15, 22, & 23  
Land except first 24 chs  
broken 3<sup>rd</sup> row  
Timber Pine undergrowth same  
Went between Secs 14, 15, & 22  
Va. 15° 30' E.
- 20,70 A Bush corner S 80° W.  
20 lks mile.
- 40,00 Set a conglomerate Stone  
20 x 12 x 3 for 1/4 sec. cor.
- 80,00 Set a Conglomerate Stone  
23 x 10 x 6 for car to Secs  
10, 11, 14, & 15.  
Land rolling 2<sup>nd</sup> & 3<sup>rd</sup> row  
Vegetation Bunches and  
Buffala grass

Yp 12 S. Rec W.

- E. on a random line  
between Secs 11, & 14,  
Va. 15° 15' E.
- 28,00 Enter Pine timber  
bearing CV. 40° W.
- 40,00 Set a Stone for temporary  
1/4 sec corner
- 80,33 Intersect of S. line out  
a point 38 lks S of  
car. to Secs 11, 12, 13, & 14  
from which point I  
run S 89° 44' W. on a  
true line
- 40,6 Set a Conglomerate Stone  
18 x 10 x 4 for 1/4 sec. corner  
A Pine 16 in. in diam.  
bears CV. 67° E 25 lks dist  
A Pine 17 in. in diam.  
bears CV. 35° W. 24 lks dist
- 80,33 The car to Secs 10, 11, 14, & 15  
Land rolling, 3<sup>rd</sup> row  
Timber Pine undergrowth same

Sp. 12 S. R. 66 W.

North between Sec 20 & 11.  
 (N. 15° 30' E.)

- 24.00 Enter Pine timber bears E. & W.  
 40.00 Set a Sand Stone ~~for~~ E  
 X for 1/4 Sec car. from which  
 A Pine 5 in. in diam.  
 bears N. 63° E. 36 lbs dist  
 66.20 Southern Road bears N 40° E.  
 67.00 Leave Pine timber bears N 40° E.  
 80.00 Set a Sand Stone 22 x 10 x 6  
 for car to Secs 2, 3, 10, & 11.  
 Land rolling 3/4 rate  
 Timber Pine under growth  
 from a random line  
 between Secs. 2, & 11  
 (N. 15° 30' E.)

- 9.12 Road, bears N 25° E.  
 15.80 Enter timber bears N. & S.  
 40.00 Set a Post for temporary  
 1/4 Sec corner.  
 80.60 Interrupt N. & S line at  
 a point 26 lbs S. of

Sp. 12, S. R. 66 W.

Post car. to Secs 1, 2, 11, & 12.  
 from which car. from  
 S. 89° 42' W. on a true line

- 40.30 Set a Post and charred  
 stake for 1/4 Sec corner at  
 A Pine 8 in. in diam  
 bears N. 2° W. 33 Chalk  
 A Pine 4 in. in diam  
 bears S. 24° E. 24 lbs dist.  
 80.60 The car to Secs 2, 3, 10, & 11.  
 Land broken, 3/4 rate.  
 Timber Pine

North on a random  
 line between Secs 2, & 3.  
 (N. 15° 30' E.)

- 5.00 Enter small Pine grove  
 11.00 Leave same.  
 21.50 A Brook, flows S. 80° W.  
 34.70 Road, bears N 80° E.  
 39.00 Enter Pine timber bears N 30° W.  
 40.00 Set a Post for temporary  
 1/4 Sec corner.

## Twp. 12 S. R. 66 W

- 44.20 Road bears N. 60° W.  
 48.00 Road bears N 50° W.  
 52.00 Santhum Road bears N. W.  
 81.75 Intersect N. Boundary line  
 at a point 75' N. of E. of  
 the cor to Secs 2, & 3, from  
 which cor. I run S 32° E.  
 on a true line  
 41.75 Set a sand stone 15 x 12 x 3  
 for 1/4 sec. cor. from which  
 A Pine 11 in. in diameter  
 bears S. 45° W. 24' dist  
 81.75 The cor to Secs 2, 3, 10, & 11.  
 Land rolling. 2 1/4 & 3 1/4 rate  
 Timber, pine, undergrowth and  
 Aug. 25<sup>th</sup> 1866  
 North between Secs. 32 & 34.  
 Va. 16° 30' E.  
 40.00 Set a conglomerate stone  
 18 x 12 x 3 for 1/4 sec. cor.  
 80.00 Set a Post in ground  
 and charred Stake for

## Twp. 12 S. R. 66 W

- cor. to Secs 27, 28, 33 & 34.  
 Land rolling. 2 1/4 rate  
Vegetation Bunch grass  
 E. on a random line  
 between Secs 27, & 34.  
 Va. 15° 30' E.  
 2.00 Dry Ravine course N. 65° W.  
 40.00 Set a Post for temporary  
 1/4 sec. corner.  
 79.62 Intersect N. & S. line at a  
 point 2 N. of cor  
 to Secs 26, 27, 34, & 35  
 from which cor. I run  
 N. 89° 6' 3" W. on a true line  
 39.56 Set a Post in mound  
 and charred Stake for 1/4 sec. cor.  
 Land rolling. 2 1/4 rate  
Vegetation Bunch and  
Buffalo grass  
 North between Secs 27, & 28  
 Va. 16° 45' E.  
 1.50 Dry Ravine course N. 70° W.



Yp. 12. S. R. 66 W.

- 5:30 Dry Ravine, course N.  
4:40 Set a Post in mound  
and marked Stone for  
1/4 Sec. corner.  
8:00 Set a conglomerate Stone  
13x8x5 for cor. to Secs.  
21, 22, 27, & 28.  
Land rolling. 2<sup>nd</sup> rate  
Vegetation Buffalo  
and Bunch grass  
On a random line  
between Secs 22, & 27.  
Va 15° 30' E.  
2:30 A ravine, course N. 20° W.  
about 100 lbs. ~~area~~  
pool of fresh water  
4:00 Set a Post for temporary  
1/4 Sec. corner.  
7:35 Intersect N. & S. line at  
a point 1/2 lb. S of cor  
to Secs 22, 23, 26, & 27  
from which cor. Iron

Yp. 12. S. R. 66 W.

- 8:30 3' W on a true line  
59:93 Set a conglomerate 18x  
10x6 for 1/4 Sec. corner.  
7:45 The cor. to Secs. 21, 22, 27, & 28.  
Land rolling. 2<sup>nd</sup> rate  
Vegetation Bunch and  
Buffalo grass  
North between Secs 21, & 22.  
Va 16° 45' E.  
2:30 Dry Ravine course N. W.  
4:00 Set a conglomerate Stone  
for 1/4 Sec. corner.  
7:40 A Brook, course S. 80° W. 80°  
lbs wide. Very high steep banks.  
8:00 Set a conglomerate Stone  
15x8x6 for cor. to Secs.  
15, 16, 21, & 22.  
Land rolling, 2<sup>nd</sup> rate  
Vegetation Buffalo  
and Bunch grass  
On a random line  
between Secs 15, & 22.

Sp 12. S. R. 66 W.

(Va. 15° 30' E.

- 7,30 A. Brook, caused S. W.  
 14,00 Same Brook, caused S. W.  
 18,20 Same Brook, caused S. 40° W.  
 34,80 Same Brook, caused S. 40° W.  
 40,00 Set a Post for temporary  
 1/4 sec. corner.  
 46,50 Same Brook, caused S. 80° W.  
 80,14 Intersect N. & S. line at a  
 point 38 lks S of car to  
 Secs 14, 15, 22 & 23. from  
 which car. I run S 55° 44' W.  
 on a true line.  
 40,00 Set a conglomerate Stone  
 15 X 12 X 3 for 1/4 sec corner.  
 A Pine 12 in. in diameter  
 bears S 25° E. 40 lks. dist.  
 A Pine 24 in. in diam.  
 bears S. 75° W. 15 lks. dist.  
 80,14 The car. to Secs 15, 16, 22 & 23.  
 Land on line broken S. 40° E.  
 Timber cutting from Brook

Sp 12 S. R. 66 W

North between Secs 15 & 16

(Va 15° 45' E.

- 2,750 Southern road bears N. E. & W.  
 40,00 Set a conglomerate Stone  
 12 X 9 X 7 for 1/4 sec corner.  
 74,00 Ravine, caused S. 40° W.  
 80,00 Set a conglomerate Stone  
 13 X 8 X 7. for cor. to Secs 9, 10, 15, & 16.  
 Land rolling 2 1/2 mi  
 Vegetation Bunch and  
Buffalo grass  
 On a random line  
 between Secs 10 & 16;  
 (Va 15° 45' E.  
 20,00 Dry Ravine caused  
 S 65° W.  
 40,00 Set a Stone for temporary  
 1/4 sec corner.  
 44,90 Southern road bears S 80° E.  
 75,92 Intersect N. & S line at a  
 point 17 lks S of car to  
 Secs 10, 11, 14 & 16; from

Gp. 12. S. R. 66 W.

which corner I run S. 89° 55' W.  
on a true line

39,56 Set a conglomerate stone  
19 x 10 x 3 for 1/4 sec. cor.

79,92 The cor. to Secs 9, 10, 16 & 4 p.  
Land gently rolling, 2<sup>nd</sup> rate  
Vegetation Bunch and  
Buffalo grass

North between Secs 9, 9 & 10.  
Va. 15° 45' E.

24,00 A Brook course S. 20° W.  
40 links wide

40,00 Set a conglomerate stone  
24 x 8 x 7, for 1/4 sec. cor.

44,40 Spring Branch, course C.

50,00 Set a conglomerate stone  
24 x 8 x 7 for cor. to Secs.  
3, 4, 9, & 10.

Land broken, 2<sup>nd</sup> rate  
Vegetation Bunch grass

on a random line  
between Secs 3, & 10

Gp. 12. S. R. 66 W.

Va. 15° 45' E.

10,30 A Brook course S. 10 links wide  
40,00 Set a stone for temporary  
1/4 sec. corner

64,60 A Brook, course S. 20° W.

69,50 Spring Branch, course D. W.

79,80 Intersect W. & S. line at a  
point 5 p. W. S. of cor. to  
Secs 2, 9, 10, & 11 from  
which corner I run S. 89°  
36' W. on a true line

39,50 Set a conglomerate stone  
13 x 6 for 1/4 sec. corner.

79,80 The cor. to Secs 3, 4, 9, & 10  
Land rolling, 2<sup>nd</sup> rate

Vegetation Bunch grass.

North on a random line  
between Secs 3, & 4.

Va. 15° 45' E.

27,05 Road bears W. E. & S. W.

40,00 Set a stone for temporary  
1/4 sec. corner.

Yp 12 S. R. 66 W.

5-2,00 Enter Pine timber land  
8,1,10 Intersect N. Boundary  
line at a point 63 lks  
of cor to Secs 3, & 4 from  
which cor. I run S 27° E.  
on a true line.

4,1,10 Set a porphyrocratic stone  
16x12x4 for 1/4 Sec corner.

8,1,10 The cor. to Secs 3, 4, 5, & 10,  
Land rolling. 2 1/2 rate.  
Timber on last 30 lks. Pine.

Aug 10 11:46 A.M.

North between Secs 32, & 33

N. 15° 46' E.

40,00 Set a Post in mound  
and charred stake for  
1/4 Sec corner.

7,1,00 To Prairie, corner S. W. standing water

80 00 Set a Post in mound  
and charred stake for  
cor to Secs 28, 29, 32, & 33.  
Land rolling. 2 1/2 rate.

Yp 12, S. R. 66 W.

Vegetation Bunch and  
Buffalo grass.

E. on random line be-  
tween Secs, 28, & 33.

N. 16° 46' E.

9,00 To Prairie, corner S. W.

40,00 Set a Post for temporary  
1/4 Sec corner.

80,05 Intersect N. & S. line at a  
point 4 lks N. of cor to  
Secs. 27, 28, 33, & 34. from  
which cor. I run. N  
89° 58' W. on a true line

40 02 Set a Post in mound  
and charred stake for  
1/4 Sec. corner.

80,05 The cor to Secs 28, 29, 32, & 33.  
Land rolling, 2 1/2 rate.

Vegetation Buffalo and  
Buck grass.

North between Secs 28, & 29

N. 15° 45' E.

Sp. 12 S. R. 66 W.

- 29.50 Southward bears N. E. & S. W.  
 40.00 Set a Post in mound  
 and charred Stake for corner.  
 50.20 S Brook course S. 50° W.  
 80.00 Set a Post in mound and  
 charred Stake for cor to  
 Secs 20, 21, 25, & 29.  
 Land rolling. 2<sup>nd</sup> rate  
 Vegetation Bunch and  
 Buffalo grass.  
 Run a random line  
 between Secs 21 & 25.  
 Va. 15° 45' E.  
 28.10 Southward road  
 bears N. & S.  
 40.00 Set a Post for temporary  
 1/4 sec cor.  
 43.20 S Brook course S. 50° W.  
 79.86 Intersection of line at a  
 point 20 N. of cor  
 to Secs 21, 22, 23, & 25  
 from which cor. run

Sp. 12 S. R. 66 W.

- N. 89° 5' 2" W. on a true line  
 37.58 Set a Post in mound  
 and charred Stake for  
 1/4 sec corner.  
 79.86 The cor. to Secs. 20, 21, 25 & 29.  
 Land flat 1/2 nearly level 2<sup>nd</sup> rate  
 Balance rolling. 3<sup>rd</sup> rate  
 Vegetation Bunch and  
 Buffalo grass.  
 North between Secs 20, 21,  
 Va. 15° 45' E.  
 40.00 Set a Post in mound and  
 charred Stake for 1/4 sec. corner  
 80.00 Set a Post in mound and  
 charred Stake for cor to Secs  
 16, 17, 20, & 21  
 Land nearly level 2<sup>nd</sup> rate  
 Vegetation Bunch and  
 Buffalo grass.  
 Run a random line  
 between 16 & 21,  
 Va. 15° 45' E.



Sp. 12. S. R. 66 W.

- 40.00 Set a Post for temporary 1/4 sec corner.  
 53.00 Road, same S. 20° W.  
 53.20 Southern road bear. 16.6° S. W.  
 79.64 Intersect N. & S. line at a point 10 lks S. of cor. to Secs 15, 16, 21 & 22. from which cor. I run S 89° 5' 6" W. on a true line  
 39.82 Set a Post in mound and charred stake for 1/4 sec corner.  
 79.64 The cor to Secs 16, 17, 20, 21 Land genly rolling, 2<sup>nd</sup> rate Vegetation Bush and Buffalo grass North between Secs 16 & 17 N. 15° 5' 8" E  
 10.30 A Branch runs, curved W.  
 40.00 Set a conglomerate stone 17x13x8 for 1/4 sec. corner  
 80.00 Set a conglomerate stone

Sp. 12. S. R. 66 W.

- 18x10x7 for cor to Secs. 8, 9, 16, & 17.  
 Land hilly 2<sup>nd</sup> & 3<sup>rd</sup> rate Vegetation Buffalo and Bunch grass.  
 On a random line between Secs. 9, & 16. N. 16° 46' E.  
 40.00 Set a stone for temporary 1/4 sec. corner.  
 62.40 Road bears 25° W.  
 69.50 A Branch, curved S. 25° W.  
 80.08 Intersect N. & S. line at a point 18 lks S. of the cor to Secs 9, 10, 16, & 17, from which cor. I run S 89° 5' 2" W. on a true line  
 40.04 Set a conglomerate stone 15x12x6 for 1/4 sec cor.  
 80.08 The cor to Secs 8, 9, 16, & 17, Land hilly. 3<sup>rd</sup> rate. Vegetation White Oak brush and grass



Tp. 12 S. R. 66 W.

North between Secs 8 & 9  
Va. 16° E.

40.00 Set a conglomerate stone  
20 x 12 x 3 for 1/4 sec. cor.

77.00 Dry ravine, came W.

80.00 Set a conglomerate  
stone 23 x 7 x 4 for  
cor. to Secs. 4, 5, 8, & 9.

Land hilly. 3% rate  
Vegetation Buffalo  
and Bunch grass.

On a random line  
between Sec. 4 & 9.

Va. 15° 46' E.

41.41 Dry ravine, came S.W.

40.00 Set a stone for tem-  
porary 1/4 sec corner.

71.80 Road bears S. 30° W.

80.36 Intersect N. S. line  
at a point 28 lks  
S of cor to Secs. 3, 4, 7, & 10  
from which cor. S

Tp. 12 S. R. 66 W.

run S 89° 51' W on a  
true line

40.17 Set a conglomerate stone  
14 x 8 x 6 for 1/4 sec. cor.

80.36 The cor. to Secs. 4, 5, 8, & 9  
Land gently rolling, 2% rate  
Vegetation Bunch and  
Buffalo grass.

Watch on a random  
line between Secs 4, & 5.  
Va. 16° E.

40.00 Set a stone for tempo-  
rary 1/4 sec cor.

80.80 Intersect N. Boundary  
line at a point 63 lks  
E. of cor to Secs. 4 & 5  
from which cor. I run  
S 27° E, on a true line

40.50 Set a conglomerate stone  
13 x 12 x 6 for 1/4 sec corner

80.80 The cor. to Secs. 4, 5, 8, & 9  
Land rolling, 2% rate

Sp. 12. S. R. 66 W

Vegetation. Bunch and  
Buffalo grass

Aug 17, 1866

North between Secs 31 & 32.

On 15<sup>th</sup> 45' E.

37.10 A Brook, course W.

25 links wide

40.00 Set a post in mound  
and charred stake for  
1/4 sec corner

80.00 Set a conglomerate stone  
24 x 17 x 3 for. cor. to  
Secs. 29, 30, 31, & 32

Land gently rolling 2<sup>nd</sup> rate  
Vegetation Bunch and  
Buffalo grass.

On a random line  
between Secs. 29 & 32

On 16<sup>th</sup> 30<sup>th</sup> E

20.30 A Brook, course S.

40.00 Set a stone for tempo-  
rary 1/4 sec corner

Sp. 12. S. R. 66 W

58.75 Road to Colorado City  
bears S. W.

72.20 Southern Road bears S. 48<sup>th</sup>

80.40 Intersect W. & S. line at  
a point 8 lks W. of cor.  
to Secs 29, 30, 31, & 32.

From which cor. I  
run N 85° 57' W  
on a true line

40.20 Set a sand stone 16 x  
14 x 3 for 1/4 sec. cor.

80.40 The cor. to Secs 29, 30, 31, & 32.

Land gently rolling 2<sup>nd</sup> rate  
Vegetation Buffalo  
and Bunch grass.

On a random line  
between Secs. 30 & 31

On 15<sup>th</sup> 45<sup>th</sup> E.

25.10 Road to Colorado  
City bears N. 20° W.

40.00 Set a stone for tempo-  
rary 1/4 sec corner

Tr. 12. S. R. 66. W.

85,25- Settle road, bears  $120^{\circ}$  E.  
80,60 Intersect W. Boundary  
line at a point  $1\frac{1}{2}$  Ch.  
N. of Stone corner to  
Secs 30. & 31. from which  
cor. I run N.  $89^{\circ}53'$  E. on  
a true line

40,60 Set a conglomerate stone  
 $20 \times 16 \times 3$  for  $\frac{1}{4}$  Sec. cor.

80,60 The cor. to Secs 29, 30, 31, & 32.  
Land gently rolling  $2\frac{1}{2}$  to 3 ft.  
Vegetation Buffalo grass  
North, between Secs 29 & 30.

On  $15^{\circ}45'$  E.

40,00 Set a conglomerate stone  
 $17 \times 12 \times 3$  for  $\frac{1}{4}$  Sec. cor.

80,00 Set a conglomerate stone  
 $17 \times 12 \times 4$  for cor. to Secs.  
19, 20, 29, & 30

Land gently rolling  $2\frac{1}{2}$  to 3 ft.  
Vegetation Buffalo  
and bunch grass

Tr. 12. S. R. 66. W.

East on a random line  
between Secs. 20. & 29.

On  $15^{\circ}15'$  E.

40,00 Set a stone for temporary  
 $\frac{1}{4}$  Sec. corner.

80,16 Intersect N. & S. line at  
a Point, cor. to Secs.

20, 21, 28, & 29. from which  
cor. I run W. on a true  
line

40,00 Set a conglomerate stone  
 $18 \times 16 \times 3$  for  $\frac{1}{4}$  Sec. corner.

80,16 The cor. to Secs. 19, 20, 29, & 30  
Land gently rolling  $2\frac{1}{2}$  to 3 ft.  
Vegetation Bunch and  
Buffalo grass

W. on a random line be-  
tween Secs. 19, & 30.

On  $15^{\circ}30'$  E.

36,80 Road to Colorado City and  
Stum creek, bears  $120^{\circ}$  E.

40,00 Set a stone for  $\frac{1}{4}$  temp

Yp 12 S. R. 66 W.

ray 1/4 sec corner.

80.48 Intersect W. Boundary  
line at a point 18 lks  
N. of cor to Secs 18, & 20,  
from which corner  
run N. 89° 52' E on a  
true line

40.48 Set a conglomerate stone  
18 x 10 x 3 for 1/4 sec cor.

80.48 The cor to Secs 19, 20, 21, & 22  
Land gently rolling 2% rate  
Vegetation Bunch and  
Buffalo grass

North between Secs 18, & 20,  
Va 15° 45' E.

40.00 Set a conglomerate stone  
16 x 10 x 4 for 1/4 sec cor.

80.00 Set a conglomerate stone  
18 x 10 x 3 for cor to Secs  
17, 18, 19, & 20.

Land gently rolling 2% rate  
Vegetation Buffalo

Yp 12, S. R. 66 W.

and Bunch grass

On a random-line  
between Secs 17, & 20

Va 15° 15' E.

17.50 A Brook course N. 40° W.

24.60 A Brook, course S 50° W.

40.00 Set a stone for tempo  
ray 1/4 sec. corner.

48.00 A Brook, course N. W.

58.00 Same Brook, course S 40° W.

80.18 Intersect N. & S line at  
a point 16 lks N. of  
Post cor to Secs 16, 17,  
20 & 21, from which cor,  
I run N. 89° 52' W. on  
a true line

40.09 Set a conglomerate stone  
15 x 8 x 6 for 1/4 sec cor.

80.18 The cor to Secs 17, 18, 19, & 20  
Land gently rolling 2% rate  
Vegetation Bunch grass

Yp 12, S. R. 66 W.

W. on a random line  
between Secs 18, & 19.

(Ca. 15' 15" E.

3110 A Brook course S 70° W.  
12 lbs. milk

4600 Set a Stone for temporary  
1/4 Sec. corner.

68,30 Road bears Cr. E. & S. W.

68,60 Monument creek course, but soon turns N. - 50° W.

80,30 Intersect W. Boundary  
line at a point 18 lbs  
Set the car to Secs 18, & 19,  
from which cor. I run  
S. 89° 53' E. on a true line

40,30 Set a Post - and charred  
Stake for 1/4 Sec. corner.

80,30 The car to Secs. 17, 18, 19, & 20

Land gently rolling 2<sup>d</sup> rate.  
Vegetation Bunch grass

North between Secs 17, & 18.

(Ca. 16° 45' E.

Yp 12, S. R. 66 W.

17,30 A Brook course, N. 40° W.

40,00 Set a Post in mound  
and charred Stake for 1/4 Sec. corner

49,50 Dry Ravine course W.

80,00 Set a Conglomerate Stone  
16 X 8 X 4 for cor. to Secs 17, 18, & 19.

Land rolling 2<sup>d</sup> rate

Vegetation Bunch and  
Buffalo grass.

July 18<sup>th</sup> 1866

E. on a random line  
between Secs 18, & 19.

(Ca. 15' 15" E.

40,00 Set a Stone for temporary  
1/4 Sec. corner

61,00 Dry ravine course S 70° W.

80,32 Intersect Cr. & S. line  
at a point 11 lbs Cr.  
of the cor. to Secs 18, 19, & 20

from which cor. I run  
Cr. 89° 53' W. on a true line

4016 Set a Conglomerate stone

Yp 12. S. R. 66 W.

80.32

18x13x4 for  $\frac{1}{4}$  sec cor.  
The cor to Sec 7, 8, 15, & 18.  
Land rolling, 2d. rate  
Vegetation Bunch and  
Buffalo grass

Run a random  
line between Secs 7 & 18  
N.  $15^{\circ} 15' 16''$  E.

40.00 Set a stone for temp.  
rary  $\frac{1}{4}$  sec corner

64.00 Good grass N.  $15^{\circ}$  W.

70.40 A Brook, crossed, W.

79.70 Intersect W. Boundary  
line at a point 26.11  
Sec cor to Secs 7, & 18,  
from which cor I run

S  $89^{\circ} 48'$  E. on a true line

39.70 Set a conglomerate stone

18x12x4 for  $\frac{1}{4}$  sec corner

79.70 The cor. to Secs 7, 8, 15, & 18.  
Land rolling 2d. rate  
Vegetation Bunch grass

Yp 12 S. R. 66 W.

North, between Secs 7 & 8.  
N.  $14^{\circ} 46'$  E.

20.60 Dry Ravine, crossed W.

40.00 Set a Sand Stone 18x13x8  
for  $\frac{1}{4}$  sec corner.

57.20 Dry Ravine, crossed W.

80.00 Set a conglomerate stone  
10x11x5 for cor to Secs  
5, 6, 7, & 8.

Land rolling, 2d. rate  
Vegetation Buffalo grass  
Run a random line  
between Secs 5, & 8.  
N.  $15^{\circ} 0'$  E.

40.70 Set a stone for temp.  
rary  $\frac{1}{4}$  sec corner.

60.10 Dry Ravine, crossed S.W.

81.40 Intersect C.V. & S line  
at a point 23 Chs C.V.

of cor. to Secs 4 & 5, from  
which cor. I run C.V.  
 $89^{\circ} 51'$  W. on a true line



Tp. 12, S. R. 66 W

- 40.23 Set a conformation stone  
14x9x6 for 1/4 sec. cor.  
80.46 The cor. to Secs. 5, 6, 7, & 8.  
Land rolling. 2¢ rate  
Vegetation Bunch  
and Buffalo grass.  
W. on a random line  
between between 8. & 7.  
N. 15° 15' E  
40.00 Set a Stone for temp  
rary 1/4 sec corner  
60.50 At Brook, corner S 24° W  
15 links wide  
79.20 Intersect W. Boundary  
line at a point S 41° E  
S. of cor. to Secs 6, & 7,  
from which cor. then  
S. 85° 37' E, on a true line  
99.20 Set a Sand Stone 16x12x8  
for 1/4 sec. corner.  
79.20 The cor. to Secs 5, 6, 7, & 8  
Land rolling 2¢ rate

Tp. 12, S. R. 66 W

- Vegetation Bunch and  
Buffalo grass.  
North on a random  
line between Secs 5 & 6.  
N. 15° 45' E.  
28.40 Dry Ravine, corner W.  
40.00 Set a Stone for temp  
rary 1/4 sec. corner.  
49.80 At Brook, corner S. 60° W.  
10 links wide  
81.00 Intersect N. Boundary  
line at a point 70 links  
E. of cor. to Secs 5, & 6 from  
which cor. then S 30°  
E on a true line  
41.00 Set a Boulder Stone  
12x10x6 for 1/4 sec. corner  
87.00 The cor. to Secs 5, 6, 7, & 8.  
Land hilly. 3¢ rate  
Vegetation Bunch and  
Buffalo grass.  
Aug. 15, 1866

Tp 12 S. R. 66 W.

General Description.

The quality of Land in this Twp. is 2<sup>d</sup> & 3<sup>d</sup> rate, Producing good grass.

The Timber in the N. E. portion of the Twp. consists of Pine with a fair proportion of good Saw Timber.

In Sec 2 Mr Judd has a Saw, lath, and Shingle Mill, in Successful operation. The Twp. is well watered with Springs and Small Streams.

*[Handwritten flourish]*

4-574

263 A

Township 12 South R. 65 W.

6	314	5	300	4	290	3	281	2	272	1
313	312	299	289	280	271					
7	311	8	298	9	289	10	279	11	270	12
311	310	297	288	278	269					
18	309	17	296	16	287	15	277	14	268	13
308	307	295	286	277	268					
19	306	20	294	21	285	22	276	23	267	24
305	304	293	284	275	266					
30	303	29	293	28	283	27	274	26	266	25
302	301	292	283	273	265					
31	301	32	291	33	284	34	273	35	264	36

Tp 12 S. R. 66 W.

Gen  
The  
Twp!  
good  
The  
from  
Pine  
of 9  
In 2  
Saw  
mill  
The  
Spri

Field Notes  
of the  
Subdivision lines of  
Township 12 S. R. 65 W.  
Surveyed by  
William Ashby

Sp 12 S. R. 65 W.

Names and duties of assistants.  
 Cicely A. Deane { chairmen  
 Alexander Durman }  
 James Fisher { flagman  
 Joel Rice { measurer

To determine the proper adjustment  
 of my compass I commence  
 at the cor to Sp 12 & 13, S. R.  
 64 & 65 W. of the 6<sup>th</sup> principal  
 meridian, in Colorado Territory,  
 and run it on a blank line  
 along the E. Boundary of Sec  
 36.  $\text{Mag } 15^{\circ} \text{ E.}$

40.02 To a point 10 lks W. of the  $\frac{1}{4}$  Sec cor

79.96 To a point 23 lks W. of the cor to  
 Secs 25 & 36, therefore to run  
 parallel to this line my com-  
 pass must be adjusted to  
 a variation of  $14^{\circ} 50' \text{ E.}$

From the cor to Secs 1, 2, 33 & 36 on  
 the S. Boundary of the 9<sup>th</sup> I run

Sp 12, S. R. 66 W.

North between Secs 36 & 36.  
 $\text{Mag. } 14^{\circ} 50' \text{ E.}$

40.00 Set a Post in mound  
 and charred Stake for  
 $\frac{1}{4}$  Sec. corner.

63.00 Small Ravine, course E.

80.00 Set a Post in mound  
 and charred Stake for cor.  
 to Secs. 25 & 26, 36 & 36.

Land gently rolling 2<sup>4</sup> mts  
 Vegetation Bunch and  
 Buffalo grass.

Run a random line  
 between Secs 25 & 36.

$\text{Mag. } 15^{\circ} 15' \text{ E.}$

40.00 Set a Post for temporary  
 $\frac{1}{4}$  Sec. cor.

79.85 Intersect E. Boundary  
 line at a point 8 lks  
 S. of cor to Secs 25 & 36,  
 from which cor. I run  
 $\text{S. } 85^{\circ} 57' \text{ W. on true line}$

Tp. 12 S. R. 65 W

Timber Pine.

W on a true line be-  
tween Secs. 18, & 19.

Cor. 15° 30' E.

40.00 Set a Post for temporary  
1/4 Sec corner.

52.60 Intersect W. Boundary  
line at a point 19<sup>th</sup>  
S. of stone cor to Secs  
18 & 19, from which cor  
I run S. 89° 52' E on  
a true line

42.60 Set a Post and charred  
stake for 1/4 Sec. cor. from which  
A Pine 60 in. in diam.  
bears S. 13° W. 32 lks dist  
A Pine 10 in. in diam.  
bears CV. 45° W. 44 lks dist

82.60 The cor. to Secs 17, 18, 19, & 20  
Land broken 3<sup>rd</sup> rate  
Timber Pine undergrowth same

Aug. 24<sup>th</sup> 1866.

Tp. 12 S. R. 65 W

North between Secs. 17 & 18.  
Cor. 16° 45' E.

7.95 A Pine 16 in. in diam.

12.50 Old Road bears S. 50° E.

40.00 Set a Post and charred  
stake for 1/4 Sec. cor. from which  
A Pine 14 in. in diam.

bears CV. 27° E. 60 lks dist

57.82 A Pine 14 in. in diam.

54.12 Spring Brook corner S. 40° W.

80.72 Set a Post and charred  
stake for cor. to Secs.

7, 8, 17, & 18 from which

A Pine 16 in. in diam.

bears S. 45° W. 18 lks dist.

A Pine 6 in. in diam.

bears S. 14° E. 28 lks dist.

A Pine 7 in. in diam.

bears CV. 65° E. 16 lks dist

A Pine 10 in. in diam.

bears CV. 8° W. 27 lks dist.

Land pulling 3<sup>rd</sup> rate

Tr. 12 S. R. 65 W.

- 1853 A Pine 15 in. in diam.  
 40,00 Set a Post and charred  
 Stake for  $\frac{1}{4}$  sec corner  
 A Pine 24 in. in diam  
 bears S. 25° E. 34 lks dist  
 A Pine 18 in. in diam,  
 bears N. 46 E 41 lks dist  
 47,00 A Small Brook course S 80° W.  
 47,90 A Small Brook course S 25° W.  
 Unit a short distance N of line  
 80,00 Set a Post and charred  
 Stake for cor to Secs 5, 6, 7,  
 & 8 from which,  
 A Pine 6 in. in diam.  
 bears N. 24° W. 10 lks dist  
 A Pine 8 in. in diam  
 bears S 24° W 43 lks dist,  
 A Pine 6 in. in diam  
 bears S. 33° E. 51 lks dist  
 Land broken, 34 ac  
 Timber Pine Aug. 27<sup>th</sup>, 1866  
 E. on a random line

Tr. 12 S. R. 65 W.

between Secs 6 & 8  
 (Ca. 15° S 0° E.)

- 17,90 Spring Brook course S.  
 40,00 Set a Post for tempo  
 rary  $\frac{1}{4}$  sec corner.  
 4025 New Road bears S 20° E  
 54,70 Pine, course S.  
 80,60 Intersect NW & S line at  
 a point 70 lks S. of cor.  
 to Secs 4, 5, 6, 7 & 8 from  
 which cor. Trun S 89° 30' W.  
 on a true line  
 4025 Set a Post and charred  
 Stake for  $\frac{1}{4}$  sec corner.  
 80,50 The cor to Secs 5, 6, 7, & 8.  
 Land gently rolling E. rate  
 Timber Pine  
 W. on a random line  
 between Sec 6 & 8.  
 (Ca. 15° E.)  
 40,00 Set a Post for tempo  
 rary  $\frac{1}{4}$  sec corner  
 42,20 Brook course S. 30° W.



Tp. 12 S. R. 45 W

- 82,05- Intersect W. Boundary line at a point 31/2 W. S. of Stone cor to Sec 6, 7, from which cor, Iron S 89° 47' E, on true line
- 42,05- Set a Post in mound and charred Stake for 1/4 sec corner.
- 82,05- The cor to Secs 5, 6, 7, & 8. Land rolling 2<sup>d</sup> rate  
Timber good Pine  
 North to random line between Secs 5 & 6, N. 75° 30' E.
- 23,70 Road bears N. 20° W.
- 40,00- Set a Post for temporary 1/4 sec corner.
- 73,00- Good timber bears S. W.
- 81,31 Intersect N. Boundary line at a point 1/2 W. of Post cor to Secs 6, & 6, from which

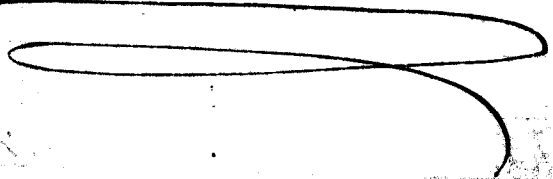
Tp. 12 S. R. 66 W

- cor, Iron S. 28° W on a true line.
- 41,31 Set a Post and charred Stake for 1/4 sec corner from which
- A Pine 16 in in diam. bears N. 49° E, 22 lks dist.
- A Pine 10 in in diam. bears S. 23° E, 32 lks dist.
- 81,31 The cor to Secs 5, 6, 7, & 8 Land rolling 2<sup>d</sup> rate  
 Timber Pine undergrowth same
- Aug 28<sup>th</sup> 1866.

General Description.  
 The quality of the Soil in this Township, is 2<sup>d</sup> and 3<sup>d</sup> rate mostly 2<sup>d</sup> rate.  
 About 3/4 of the 2<sup>d</sup> is well timbered which alone will make it valuable.  
 Timber consists of Pine, chiefly.

65  
Twp 12. S. R. 64 W.

There are several good Springs  
of fresh water, and also  
Several Small Streams  
in the Township affording  
an ample supply of  
water for ordinary pur-  
poses.



We hereby certify that we  
assisted Wm Ashley deputy  
surveyor in surveying the  
Exterior lines of Tps 18 S. R.  
64 W. The subdivisional lines  
of Tps. ~~18~~ S. R 64 W. 18 S 65  
W. 12. 14 + 15 S. R 65. - 12  
+ 13 S. R. 66 W. of the 6<sup>th</sup>  
Principal Meridian in  
Colorado and that said  
Tps have been in all res-  
pects to the best of our  
knowledge and belief well  
and faithfully surveyed  
and the boundary monuments  
planted according to the  
instructions furnished by  
the Surv. Genl.

Alexander D. McLean  
Lucile A. Deane } Chairman  
Geo. A. Fisher } Flyman  
John Roe } Recorder

Territory of Colorado 3<sup>rd</sup>  
 Arapahoe County 3<sup>rd</sup>

Subscribed  
 by the above named persons  
 and sworn to before me  
 this 7<sup>th</sup> day of Sept. 1866.

Eli W. Ashley  
 Notary Public

I William Ashley, deputy  
 surveyor, do solemnly swear  
 that in pursuance of a con-  
 tract with John Pierce Sur-  
 veyor Gen. of the public lands  
 of the United States in the  
 Territory of Colorado bearing  
 date the 25<sup>th</sup> of May 1866  
 and in strict conformity to  
 the laws of the U.S. and

the instructions furnished  
 by the Surv. Genl. I have  
 faithfully surveyed the  
 exterior lines of Tps. 18 S. R.  
 64 W. and the subdivisional  
 lines of Tps. 18 S. R. 64, 18 S. R.  
 65, 12, 14 & 15 S. R. 65, 12 &  
 13 S. R. 66. W of the 6<sup>th</sup> Prime  
 Meridian in Colorado, and  
 do further solemnly swear  
 that the foregoing are the  
 true and original field notes  
 of such survey

William Ashley  
 Deputy Surveyor.

Territory of Colorado 3<sup>rd</sup>  
 Arapahoe County 3<sup>rd</sup>

Subscribed  
 and sworn to before me this  
 7<sup>th</sup> day of Sept 1866.

Eli W. Ashley  
 Notary Public

Survey General's office  
 Denver Sept. 14<sup>th</sup> 1866.  
 The foregoing field notes  
 of the survey of the exterior  
 lines of the 18 S. R 64 N. and  
 the subdivisional lines of  
 the 18 S. R 64, 18 S R 65, 12  
 14 & 15 S R 65 and 12 & 13  
 S R 66 N. of the 6<sup>th</sup> Prin-  
 meridians - executed by Wm  
 Ashley under his contract  
 of ~~May~~ 25<sup>th</sup> 1866 - having  
 been critically examined  
 the necessary corrections and  
 explanations made the said  
 field notes, and the survey  
 they describe are hereby  
 approved.

John Pine  
 Survey General  
 of Colorado Territory

## FIELD NOTES

OF THE ~~SURVEYING SERVICE~~

REESTABLISHMENT OF CERTAIN TOWNSHIP CORNERS WITHIN THE

CHERRY CREEK DRAINAGE BASIN

Section \_\_\_\_\_ Township \_\_\_\_\_

In the State of \_\_\_\_\_ COLORADO

## EXECUTED BY

John M. Saffa, U.S. Cadastral Engineer, in the capacity of U.S. Surveyor, under  
 authority contained in letter 1522920 "E" from the Commissioner of the General Land  
 Office dated January 11, 1934, and Assignment Instructions dated January 23, 1934

In the capacity of U.S. Surveyor, under Special Instructions dated \_\_\_\_\_,

19\_\_\_\_, issued by the District Cadastral Engineer to govern surveys included in Group

No. \_\_\_\_\_, which were approved by the Commissioner of the General Land

Office, \_\_\_\_\_, 19\_\_\_\_, and Assignment Instructions dated \_\_\_\_\_, 19\_\_\_\_

Survey commenced \_\_\_\_\_ January 26 \_\_\_\_\_, 1934

Survey completed \_\_\_\_\_ February 14 \_\_\_\_\_, 1934

6-321

Re. S. E. S. N. S. E. P. S. M. S. has been correctly copied from the original notes on file in this office.

U. S. Supervisor of Surveys

## INDEX DIAGRAM.

Township \_\_\_\_\_, Range \_\_\_\_\_

1	2	3	4	5	6
7	8	9	10	11	12
13	14	15	16	17	18
19	20	21	22	23	24
25	26	27	28	29	30
31	32	33	34	35	36

U. S. GOVERNMENT PRINTING OFFICE 6-151

INDEX TO CORNER  
OF

Ts. 11 and 12 S., Rs. 64 and 65 W.	-----	pg. 1
Ts. 10 and 11 S., Rs. 64 and 65 W.	-----	2
Ts. 9 and 10 S., Rs. 64 and 65 W.	-----	3
Ts. 8 and 9 S., Rs. 64 and 65 W.	-----	3
Ts. 7 and 8 S., Rs. 64 and 65 W.	-----	4
Ts. 6 and 7 S., Rs. 64 and 65 W.	-----	4
Ts. 5 and 6 S., Rs. 64 and 65 W.	-----	5
Ts. 4 and 5 S., Rs. 64 and 65 W.	-----	
Ts. 11 and 12 S., Rs. 65 and 66 S.	-----	5
C.O. Ts. 11 S., Rs. 65 and 66 W.	-----	6
S.O. Ts. 10 S., Rs. 65 and 66 W.	-----	6
Ts. 9 and 10 S., Rs. 65 and 66 W.	-----	7
Ts. 8 and 9 S., Rs. 65 and 66 W.	-----	7
Ts. 7 and 8 S., Rs. 65 and 66 W.	-----	8
Ts. 6 and 7 S., Rs. 65 and 66 W.	-----	8
C.O. Ts. 6 S., Rs. 65 and 66 W.	-----	9
S.O. Ts. 5 S., Rs. 65 and 66 W.	-----	9
Ts. 4 and 5 S., Rs. 65 and 66 W.	-----	10
Ts. 11 and 12 S., Rs. 66 and 67 W.	-----	11
C.O. Ts. 11 S., Rs. 66 and 67 W.	-----	11
S.O. Ts. 10 S., Rs. 66 and 67 W.	-----	12
Ts. 9 and 10 S., Rs. 66 and 67 W.	-----	12
Ts. 8 and 9 S., Rs. 66 and 67 W.	-----	13
Ts. 7 and 8 S., Rs. 66 and 67 W.	-----	13
Ts. 6 and 7 S., Rs. 66 and 67 W.	-----	14
S.O. Ts. 6 S., Rs. 66 and 67 W.	-----	14
C.O. Ts. 5 S., Rs. 66 and 67 W.	-----	15
Ts. 4 and 5 S., Rs. 66 and 67 W.	-----	15
Ts. 3 and 4 S., Rs. 66 and 67 W.	-----	16
Ts. 7 and 8 S., Rs. 67 and 68 W.	-----	16
Ts. 6 and 7 S., Rs. 67 and 68 W.	-----	17
U.O. Ts. 6 S., Rs. 67 and 68 W.	-----	17
S.O. Ts. 5 S., Rs. 67 and 68 W.	-----	18
Ts. 4 and 5 S., Rs. 67 and 68 W.	-----	19



Reestablishment of certain township corners within the  
Cherry Creek Drainage Basin, Colorado.

The following identification and monumentation of certain township corners is done under authority granted in letter 1522920 "E" EGH, dated January 11, 1934, for cooperation with the U. S. Geological Survey in connection with their topographic survey of the Cherry Creek Drainage Basin.

Field work was commenced on Jan. 26, 1934, under Assignment Instructions dated Jan. 23, 1934, received from Mr. Herman Jasckel, District Cadastral Engineer.

Method of Procedure.

Transit traverse parties of the U. S. Geological Survey had previously surveyed to, or set traverse survey stations near each township corner.

The field party furnished by the Geological Survey was made up from men who had been with the transit traverse parties and who were familiar with the loci of the township corners.

In the identification of the obliterated corners, inquiry was made of long time residents and land owners, also the records of county and abstract offices were searched for recorded quit-claim deeds for road rights of way.

Corner positions accepted by local land surveyors were carefully examined, and given due consideration. Copies of the original field notes were made, and the calls of the field notes were checked upon the ground. Field records of the transit traverses of the topographic survey were in some instances reduced to latitudes and departures for the purpose of determining distances and bearings between Public Survey corners.

Distances from true corner positions to witness corners are given in cardinal directions in links and also in feet.

Reestablishment of certain township corners  
along the 8th Guide Meridian W., South of the  
Base Line, surveyed by Joel E. Hendricks, U.  
S. Deputy Surveyor, in 1861.

The true point for the cor. of Ts. 11 and 12 S., Rs. 64 and 65 W., is identified as being at the center point between right of way fences bordering a graded and well traveled highway, bearing N. and S., and in line with a fence running W.

As the true point for the township corner falls within the line of travel, I witness the corner as follows.

At a safe place for a permanent monument, which is 57.12 links (37.7 ft.) West, and 60.6 lks. (40 ft.) North, of the true point for the township corner.

Set an iron post, 3 ft. long, 3 ins. diam., 34 ins. in the ground and deposit a damaged brass cap, dated 1934, beneath base of post, for witness corner to the corner of Ts. 11 and 12 S., Rs. 64 and 65 W., with brass cap mkd.

Reestablishment of certain township corners within the  
Cherry Creek Drainage Basin, Colorado.

Set an iron post, 3 ft. long, 3 ins. diam., 34 ins. in the ground and deposit a damaged brass cap, dated 1934, beneath base of post, for witness corner to the corner of Ts. 7 and 8 S., Rs. 64 and 65 W., with brass cap mkd.

T7S  
R65W R64W  
S36|S31  
S 1 1/2 S 6 WC  
T6S

1934

The true point for the corner of Ts. 6 and 7 S., Rs. 64 and 65 W. is identified as being in the center of right of way bordering a N. and S. road, and in line with a fence running W.

As the true point for the township corner falls along the line of travel, I witness the corner as follows;

At a safe place for a permanent monument, which is 68.2 links (45 ft.) North, and 45.5 links (30 ft.) West of the true point for the township corner.

Set an iron post, 3 ft. long, 3 ins. diam., 33 ins. in the ground and deposit a damaged brass cap, dated 1934, beneath base of post, for witness corner to the corner of Ts. 6 and 7 S., Rs. 64 and 65 W., with brass cap mkd.

T6S  
R65W R64W  
S36|S31  
S 1 1/2 S 6  
T7S W

1934

The true point for the corner of Ts. 5 and 6 S., Rs. 64 and 65 W., is identified as being in the center of right of way bordering an E. and W. road, and in line with old fence trails running N. and S.

As the true point for the township corner falls in the line of travel, I witness the township corner as follows. At safe place for cor., which is 45.5 links (30 ft.) North and 45.5 lks. (30 ft.) East of true point for township corner. Set an iron post, 3 ft. long, 3 ins. diam., 33 ins. in the ground and deposit a damaged brass cap, dated 1934, beneath base of post, for witness corner to the corner of Ts. 5 and 6 S., Rs. 64 and 65 W., with brass cap mkd.

Reestablishment of certain township corners within the  
Cherry Creek Drainage Basin, Colorado.

T5S  
R65W R64W  
S36|S31  
S 1 1/2 S 6  
W C T6S

1934

The true point for the corner of Ts. 4 and 5 S., Rs. 64 and 65 W. is identified as being in the center of the intersection of rights of way bordering roads running North, East and South.

As the true point for the township corner falls within the lines of travel, I witness the corner as follows;

At a safe place for a permanent monument, which is 37.9 links (25 ft.) North, and 37.9 links (25 ft.) West of the true point for the township corner.

Set an iron post, 3 ft. long, 3 ins. diam., 32 ins. in the ground and deposit a damaged brass cap, dated 1934, beneath base of post, for witness corner to the corner of Ts. 4 and 5 S., Rs. 64 and 65 W., with brass cap mkd.

T4S  
R65W R64W  
S36|S31  
S 1 1/2 S 6  
T5S W

1934

Reestablishment of certain township corners  
within the Cherry Creek Drainage Basin, Colo.,  
surveyed by A. Z. Sheldon, U. S. Deputy Surveyor, in 1864 and 1865.

The true point for the corner of Ts. 11 and 12 S., Rs. 65 and 66 W. is identified as being at a fence corner, from which fences bear N., E., and W., and the center of a right of way for a road, bears S.

As the true point for the township corner may be disturbed by the subsequent extension of this road to the north, I witness the corner, as follows;

At a safe place for a permanent monument, which is 48 links (31.65 ft.) East, and 46.3 links (30.56 ft.) South of the true point for the township corner.

Set an iron post, 3 ft. long, 3 ins. diam., 34 ins. in the ground and deposit a damaged brass cap, dated 1934, beneath base of post, for witness corner to the corner of Ts. 11 and 12 S., Rs. 65 and 66 W., with brass cap mkd.

Reestablishment of certain township corners within the  
Cherry Creek Drainage Basin, Colorado.

W. C  
T11S  
R66W R65W  
S36|S31  
S 1|S 6  
T12S  
1934

The true point for the closing corner of Ts. 11 S., Rs. 65 and 66 W., is identified as being at the center of the intersection of road rights of way, E., S., and W.

As the true point for the closing township corner falls within the lines of travel, I witness the corner as follows:

At a safe place for a permanent monument, which is 45.5 links, (30 ft.) North of the true point for the closing township corner.

Set an iron post, 3 ft. long, 3 ins. diam., 34 ins. in the ground and deposit a damaged brass cap, dated 1934, beneath base of post, for witness corner to the closing corner of Ts. 11 S., Rs. 65 and 66 W., with brass cap mkd.

T10SR66W  
S 36  
S1|S6  
R66W|R65W  
T11S  
C C  
W C

1934

From the true point for the closing corner of Ts. 11 S., Rs. 65 and 66 W., the standard corner of Ts. 10 S., Rs. 65 and 66 W., bears East, 3.48 chains (229.7 ft.) distant.

Reestablishment of a standard township corner Second Stan. Parallel S. surveyed by Joel E. Hendricks, U.S. Deputy Surveyor, in 1861.

The true point for the standard corner of Ts. 10 S., Rs. 65 and 66 W. is identified as being at the center of the intersection of road rights of way, E., S., and W.

As the true point for the standard township corner falls within the lines of travel, I witness the corner as follows:

At a safe place for a permanent monument, which is 45.9

Reestablishment of certain township corners within the  
Cherry Creek Drainage Basin, Colorado.

links (30.31 ft.) North, and 52.8 links (34.87 ft.) East, of the true point for the standard township corner.

Set an iron post, 3 ft. long, 3 ins. diam., 34 ins. in the ground and deposit a damaged brass cap, dated 1934, beneath base of post, for witness corner to the standard corner of Ts. 10 S., Rs. 65 and 66 W., with brass cap mkd.

S C  
T10S  
R66W R65W  
S36|S31  
C  
W 1934

Reestablishment of certain township corners within the Cherry Creek Drainage Basin, Colo., surveyed by A. Z. Sheldon, U. S. Deputy Surveyor, in 1864 and 1865.

The true point for the corner of Ts. 9 and 10 S., Rs. 65 and 66 W. is identified as being at the intersection of fence lines; fences bear N., S., and W.

At true point for the corner.

Set an iron post, 3 ft. long, 3 ins. diam., 33 ins. in the ground and deposit a damaged brass cap, dated 1934, beneath base of post, for the corner of Ts. 9 and 10 S., Rs. 65 and 66 W., with brass cap mkd.

T9S  
R66W R65W  
S36|S31  
S 1|S 6  
T10S

1934

The original corner of Ts. 8 and 9 S., Rs. 65 and 66 W., is a broken porphyry stone, largest piece firmly set in the ground, the pieces fitted together bulk to 16x10x6 ins., and carry the complete markings.

In place of the stone corner

Set an iron post, 3 ft. long, 3 ins. diam., 31 ins. in the ground and deposit a damaged brass cap, dated 1934, beneath base of post, for the corner of Ts. 8 and 9 S., Rs. 65 and 66 W., with brass cap mkd.

Reestablishment of certain township corners within the Cherry Creek Drainage Basin, Colorado.

In place of the above described, set an iron post, 3 ft. long, 3 ins. diam., 33 ins. in the ground and deposit a damaged brass cap, dated 1934, beneath base of post, for the standard corner of Ts. 5 S., Rs. 65 and 66 W., with brass cap mtd.

S C  
R66W R66W  
S36E S31  
S 1 1/2 6  
T128

1934

Reestablishment of certain township corners within the Cherry Creek Drainage Basin, Colo., surveyed by John Pierce, Licensed Surveyor.

The true point for the corner of Ts. 4 and 5 S., Rs. 65 and 66 W. is identified as being at the center of rights of way for roads, E. 1/2 Sec. 4 and Sec. 5, and on line with a fence running to the N. The true point of right of way to the N. is 45.3 links (29.7 ft.) wide and is all taken out of Sec. 1. The intersection, George E. Baker, small resident and owner of adjacent land.

As the true point for the township corner falls within the lines of travel, I witness it as follows:

At a safe place for a permanent monument, which is 45 links (29.7 ft.) South, and 45 links (29.7 ft.) East, of the true point for the township corner.

Set an iron post, 3 ft. long, 3 ins. diam., 33 ins. in the ground and deposit a damaged brass cap, dated 1934, beneath base of post, for witness corner to the corner of Ts. 4 and 5 S., Rs. 65 and 66 W., with brass cap mtd.

S C  
R66W R66W  
S36E S31  
S 1 1/2 6  
T128

Reestablishment of certain township corners within the Cherry Creek Drainage Basin, Colo., surveyed by John Pierce, Licensed Surveyor.

Reestablishment of certain township corners within the Cherry Creek Drainage Basin, Colo., surveyed by John Pierce, Licensed Surveyor.

Reestablishment of certain township corners within the Cherry Creek Drainage Basin, Colorado.

The original corner of Ts. 11 and 12 S., Rs. 66 and 67 W. is a dark colored arkose stone 23x9x5 loosely set, and plainly and properly marked; at the intersection of fences which bear N., E., S., and W.

In place of the original corner stone, and against the south side of corner post of fences.

Set an iron post, 3 ft. long, 3 ins. diam., 34 ins. in the ground and deposit a damaged brass cap, dated 1934, beneath base of post, for the corner of Ts. 11 and 12 S., Rs. 66 and 67 W., with brass cap mtd.

T118  
R67W R66W  
S36E S31  
S 1 1/2 6  
T128

1934

bury the original stone corner with the iron post, as an additional memorial.

The true point for the closing corner of Ts. 11 S., Rs. 66 and 67 W. is identified as being at the center of the intersection of rights of way for roads, which extend N., S., and W.

As the true point for the closing township corner falls within the lines of travel, I witness the corner as follows:

At a safe place for a permanent monument, which is 47.7 links (31.5 ft.) South, and 44.7 links (29.5 ft.) West, of the true point for the Closing Township corner.

Set an iron post, 3 ft. long, 3 ins. diam., 33 ins. in the ground and deposit a damaged brass cap, dated 1934, beneath base of post, for witness corner to the closing corner of Ts. 11 S., Rs. 66 and 67 W., with brass cap mtd.

T108R67W  
S36  
S1 1/2 6  
R67W R66W  
T118  
C C

1934

from which

A pine, 3 1/2 ins. diam., bears S. 20 1/2° W., 54 links dist., mtd. W C B T.

From the true point for the closing corner of Ts. 11 S., Rs. 66 and 67 W., the true point for the standard corner of Ts. 10 S., Rs. 66 and 67 W., bears East, 0.68 chains, (44.88 ft.) distant.



# CERTIFICATE OF UNITED STATES SURVEYOR

I, John M. Tufts, U.S. Cadastral Engineer, hereby certify upon honor that, in pursuance of authority contained in letter 1522920 "E" from the Commissioner of the General Land Office

of special instructions transmitted from the District Cadastral Engineer for the hearing date of the 11th day of January, 1934, I have well, faithfully, and truly in my own proper person, and in strict conformity with said instructions, the Manual of Surveying Instructions, and the laws of the United States, ~~surveyed the same~~ reestablished certain township corners within the Cherry Creek Drainage Basin

~~of the~~  
 Meridian, in the State of Colorado, which are represented in the foregoing field notes as having been executed by me, and under my direction; and that all the corners of said survey have been established and perpetuated in strict accordance with the Manual of Surveying Instructions, ~~and the special written instructions of the District Cadastral Engineer for~~ and in the specific manner described in the field notes, and that the foregoing are the original field notes of such survey

Denver, Colorado  
 March 9, 1934

*John M. Tufts*  
 U. S. Cadastral Engineer

## APPROVAL

Office of U. S. Supervisor of Surveys,

March 13, 1934

The foregoing field notes of the survey of ~~reestablishment of certain township corners~~ within the Cherry Creek Drainage Basin, Colorado,

witnessed by John M. Tufts, U. S. Cadastral Engineer the Commissioner's letter 1522920 "E" under his special instructions dated January 11, 1934, having been critically examined, and the necessary corrections and explanations made, the said field notes, and the surveys they describe, are hereby approved.

*William J. Quinn*  
 U. S. Supervisor of Surveys

I certify that the foregoing transcript of the field notes of the above described surveys in has been correctly copied from the original notes on file in this office.

U. S. Supervisor of Surveys



## CERTIFICATE OF SURVEY

I, Henry U. Lang, HEREBY CERTIFY upon honor that,  
in pursuance of special instructions bearing date of the 27th day of October, 1955.

I have made the dependent resurvey of part of the exterior and subdivision lines and subdivided certain sections in T. 46 N., R. 17 W.

of the New Mexico Principal Meridian, in the State of Colorado, which are represented in the foregoing field notes as having been executed by me and under my direction; and that said survey has been made in strict conformity with said special instructions, the Manual of Instructions for the Survey of the Public Lands of the United States, and in specific manner described in the foregoing field notes.

May 11, 1966  
(Date)

*Henry U. Lang*  
(Cadastral Surveyor)  
Henry U. Lang

(Date)

(Cadastral Surveyor)

## CERTIFICATE OF APPROVAL

SUBMITTED FOR APPROVAL  
Date MAY 20 1966

BUREAU OF LAND MANAGEMENT,  
Washington, D. C.

The foregoing field notes of the dependent resurvey of part of the exterior and subdivision of T. 46 N., R. 17 W., New Mexico Principal Meridian.

executed by Henry U. Lang

having been critically examined and found correct, are hereby approved.

JUN 8 1966  
(Date)

*E. L. Livingston*  
(Chief, Division of Engineering)

## CERTIFICATE OF TRANSCRIPT

I CERTIFY That the foregoing transcript of the field notes of the above-described surveys in  
, is a true copy of the original field notes.

(Date)

(Chief, Division of Engineering)

ORIGINAL

UNITED STATES  
DEPARTMENT OF THE INTERIOR  
BUREAU OF LAND MANAGEMENT

## FIELD NOTES

OF THE

DEPENDENT RESURVEY OF THE BOUNDARIES

AND

PARTIAL SUBDIVISION OF SECTIONS 5 AND 6,

T. 13 S., R. 66 W.,

Of the Sixth Principal Meridian,

In the State of Colorado

## EXECUTED BY

Leonard W. Murphy, Cadastral Surveyor

Under special instructions dated March 23, 1955, which provided for the surveys included under Group Number 532, Colorado, approved April 1, 1966, and assignment instructions dated April 1, 1966.

Survey commenced April 1, 1966

Survey completed May 17, 1966

PAPER

## INDEX DIAGRAM

Township 13 South, Range 66 West

5	3				
2	10	6	4	8	1
9	7				
7	8	9	10	11	12
13	17	18	15	14	16
19	20	21	22	23	24
25	26	27	28	29	30
31	32	33	34	35	36

Center lines Section 5. . . . . Page 11

Center lines Section 6. . . . . Page 11

## CHAINS

The following field notes describe the dependent resurvey of the boundaries and partial subdivision of secs. 5 and 6, T. 13 S., R. 66 W., 6th P. M., Colorado.

The resurveys were made in strict adherence to the regulations governing dependent resurveys and subdivision of sections specified in the Manual of Surveying Instructions and the provisions of the Special Instructions dated March 23, 1966.

These resurveys were made at the request of the U. S. Army Corps of Engineers, Omaha District Office. The purpose of the resurvey was to provide section boundaries which control certain segments of the boundary of the U. S. Air Force Academy. In addition to the usual section boundaries, a limited subdivision of each section was made and the center quarter-section corners were established. No attempt was made to define the irregular portions of the actual boundary of the Air Force Academy Site.

All bearings in these notes are referred to the true meridian as determined by angulation from the permanently established triangulation station "Pine Valley" as described in the official record of the U. S. Coast and Geodetic Survey in 1953. The azimuth mark was reset in 1966 and the new value therefor was used in determining bearings of true lines. It is to be noted, bearings of all previous surveys of the Air Force Academy Boundary and the pertinent section lines have been reported as plane grid bearings based on the Colorado Central Line.

Only true horizontal distances are shown in these field notes. The length of the line between secs. 4 and 5 and the east half mile of the line between secs. 5 and 6 were ascertained with Tellurimeters. These lines were used as basis for comparison in computing closures of the individual section boundaries.

According to the official records on file in the Colorado Land Office, the survey of the township boundaries was executed by A. Z. Sheldon, in 1888. The section lines were surveyed by Deputy William Ashley, in 1896. Since the date of the original surveys, innumerable local surveys have been made and the survey of the Air Force Academy Boundary was made in 1958. Extensive records of these surveys are on file at the El Paso County Court House, in Colorado Springs.

All lands in these sections are patented. In the establishment of the Air Force Academy, large portions of sections 5 and 6 were acquired by the U. S. Government. These acquired lands are described by metes and bounds survey descriptions which are dependent upon the regular section and quarter section corners of secs. 5 and 6.

The latitude and longitude of the corners of secs. 5 and 6, T. 13 S., R. 66 W., can be obtained from the tie to U. S. Coast and Geodetic Survey Station "Pine Valley". The published geographic coordinates of that station are: latitude 38° 58' 10".844, North, Longitude 104° 40' 44".275 West. The station is connected by direct tie to the corner of secs. 5, 6, 31 and 32, Tps. 12 and 13 S., R. 66 W.

Dependent Resurvey of the Boundaries of Secs. 5 and 6,  
T. 13 S., R. 66 W., 6th P.M.

CHAINS	Dependent Resurvey of a Portion of the West Boundary of T. 13 S., R. 66 W.
	<p>Reestablishing the Survey Executed by Deputy A. Z. Sheldon, in 1864.</p> <p>The corner of secs. 1, 6, 7 and 12, Tps. 13 S., Rs. 66 and 67 W., is marked by the original monument, a granite stone, 24x12x6 ins., firmly set in the corner of old and abandoned fences bearing N., S., E. and W., marked with five notches on the south and one notch on the north faces.</p> <p>At the corner point,</p> <p>Set an iron post, 2 ins. diam., 30 ins. long, 18 ins. in the ground, with brass cap mkd.,</p> <p style="text-align: center;">T13S R67W R66W S 1 1/8 6 S12 1/8 7 1966</p> <p>Bury the old stone monument alongside the iron post; raise a mound of stone, 5 ft. base, around iron post.</p> <p>From the corner,</p> <p>N. 0° 05' E., between secs. 1 and 6.</p> <p>Over rolling land, along fence, through scattered pine timber.</p>
11.80	Spur, slopes SE.
28.75	Small wash, dry, course E., asc. southerly slopes.
38.00	Top of ridge, bears E. and W., desc. northerly slope.
39.88	<p>The <math>\frac{1}{4}</math> sec. cor. of secs. 1 and 6, marked by the original monument, a granite stone, 18x10x6 ins., firmly set in the ground, in small mound of stones, mkd. <math>\frac{1}{4}</math> on W. face.</p> <p>At the corner point,</p> <p>Set an iron post, 2 ins. diam., 30 ins. long, 24 ins. in the ground, with brass cap mkd.</p> <p style="text-align: center;">† S 1 1/8 6 1966</p> <p>Bury the original corner stone alongside the iron post; raise a mound of stones around the post. The corner is set at corner of fences bearing E., W. and S.</p>
	<p>N. 0° 05' E., bet. secs. 1 and 6, beginning new measure- ment.</p> <p>Descending northerly slopes.</p>

Dependent Resurvey of a Portion of the  
West Boundary of T. 13 S., R. 66 W.

CHAINS	Dependent Resurvey of a Portion of the West Boundary of T. 13 S., R. 66 W.
6.05	Creek, 5 lks. wide, course E., asc. S. slopes.
10.00	Top of ridge, bears E. and W., desc. broken northeasterly slopes.
10.00	Center of track, Denver and Rio Grande Western Railroad track on curve from N. 45° W. to S. 35° E.
28.00	Monument Creek, 15 lks. wide, course SE.
29.82	U. S. Air Force Academy Boundary marker, B 60, a standard brass tablet seated in concrete form the top of which is flush with the surface. The brass cap is marked USAF B 60.
38.10	Paved road, bears NE. and SW.
39.74	<p>The corner of Tps. 12 and 13 S., Rs. 66 and 67 W., marked by the original monument, a granite stone 16x10x5 ins., firmly set in mound of stone, marked with six notches on four edges.</p> <p>At the corner point,</p> <p>Set an iron post, 2 ins. diam., 30 ins. long, 26 ins. in the ground, with brass cap mkd.</p> <p style="text-align: center;">T12S R67W R66W S 3 1/8 S31 S 1 1/8 5 T13S 1966</p> <p>Bury the old stone at base of iron post; raise a mound of stone, 3 ft. base, 2 1/2 ft. high, W. of corner.</p> <p>The corner falls in large cleared area within the U. S. Air Force Academy.</p>
	Dependent Resurvey of a Portion of the North Boundary of T. 13 S., R. 66 W.
	<p>Reestablishing the Survey executed by Deputy Surveyor A. Z. Sheldon, in 1864.</p> <p>The corner of secs. 4, 5, 32 and 33, Tps. 12 and 13 S., R. 66 W., is marked by an iron pipe, 1 1/2 ins. in diam., set in old fence bearing N. and S. Local surveyors records indicate this pipe was set in place of a decayed conglomerate stone which had been accepted as the origi- nal corner of the sections to which it is referred. The first formal record of the remonumentation of this corner indicates its acceptance prior to 1940.</p> <p>At the corner point,</p> <p>Set an iron post, 2 ins. diam., 30 ins. long, 26 ins. in the ground, with brass cap mkd.</p>

Dependent Resurvey of a Portion of the  
North Boundary of T. 13 S., R. 66 W.

	<p>T128 R66W S32/S33 S 5/8 4 T138 R66W 1966</p> <p>Place the iron pipe in hole alongside the post; place several stones alongside the post. No other accessories available.</p> <p>From the corner point, N. 89° 55' W., between secs. 5 and 32.</p> <p>Along old, partially fallen fence, over rolling land.</p>
7.50	Head of small dry draw, drains SW.
20.38	Corner of fences, bearing E., SW. and N. The fences SW and N., mark the true boundary of the Air Force Academy Site. The corner post of these fences represents Corner 7 of the Boundary traverse.
20.43	Witness Corner B 7, U. S. Air Force Academy, marked by a standard brass tablet, seated in concrete cylinder, bears S., 1 lk. dist. The brass cap is marked USAF B 7.5 ft. SW. of Cor.
25.00	Center of paved State Highway No. 83, bears N. to Black Forest and S. to SW. to Academy Boulevard Junction.
39.14	Pine Creek, a trickle of water in sandy wash, course S.
40.24	Point for the $\frac{1}{4}$ sec. cor. of secs. 5 and 32, at proportionate distance: there is no remaining evidence of the original corner monument.
	Set an iron post, 2 ins. diam., 30 ins. long, 24 ins. in the ground, with brass cap mkd.
	<p>T128 R66W <math>\frac{1}{4}</math> S 32 S 5 T138 1966</p> <p>Corner is set 9 lks. S. of concrete lined drainage ditch; 110 lks. westerly of W. edge of concrete culvert on Pine Creek.</p>
41.92	Center of east limb of U. S. Highway I-25, bears generally NE. to N. and SW. to W., at N. edge of south interchange to Air Force Academy Boulevard Entrance to Academy.
44.20	Center west limb of interchange. Line continues generally along graded fills from interchange.
79.00	Enter Academy Boulevard paved road at south gate to Air Force Academy. Gate House bears S., 27 ft. dist.
80.48	Point for the corner of secs. 5, 6, 31 and 32, marked by the intersection of the center line of old U. S. Highway 85, as constructed in 1924, and the remaining evidence of an old wire fence, now partially obliterated. The position was further verified by ties to the Townsite of Breed, Colorado, plats of which are dated 1929 and 1947, on file in the El Paso County Offices, in Colorado

Dependent Resurvey of a Portion of the  
North Boundary of T. 13 S., R. 66 W.

	<p>Springs. This position was further verified by County Surveyor T. J. Russell while at the actual site of the corner.</p> <p>At the corner point,</p> <p>Drive a steel spike, 8 ins. long, in the pavement at the south edge of the north limb of Academy Boulevard.</p> <p>From the corner</p> <p>An iron post, 2 ins. diam., 30 ins. long, set 27 ins. in the ground for a reference monument, bears N. 45° E., 1.515 chs. dist. The brass cap is mkd. T128 R66W S32 100 FT and an arrow pointing toward the corner.</p> <p>An iron post, 2 ins. diam., 30 ins. long, set 27 ins. in the ground for a reference monument, bears N. 45° W., 1.515 chs. dist. The brass cap is mkd. T128 R66W S31 100 FT and an arrow pointing toward the corner.</p> <p>A point on the curb and the west end of a concrete traffic separator bears S. 60° E., 7 lks. dist.</p> <p>The Sentry House at the South Gate of the Air Force Academy bears S. 70° E., about 30 lks.</p> <p>The corner is situated in the southern edge of the north limb of Academy Boulevard and in the east edge of the divided intersection of a paved road extending south to the Air Force Academy Museum and an abandoned paved road bearing north.</p> <p>From the corner, Triangulation Station "Pine Valley" established by the U. S. Coast and Geodetic Survey, bears N. 1° 13' W., 82.28 chs. dist. The station is marked by a standard bronze tablet, seated in a concrete cylinder, in the east edge of the present access road serving the Pine Valley Airport, an installation of the Air Force Academy.</p>
	<p>S. 89° 32' W., between secs. 6 and 31.</p> <p>Along divider and pavement of Academy Boulevard, over nearly level landscaped areas adjacent to the highway.</p>
11.00	Highway bears N. 85° W. and S. 86° E., over graded grass land.
38.85	Center of track, A. T. and S. F. Railroad, track bears NW. and SE.
39.86	Point for the $\frac{1}{4}$ sec. cor. of secs. 31 and 6 falls in an area that has been graded and filled. There is no remaining evidence of the original $\frac{1}{4}$ sec. cor. As far as can be determined, there are no ties or other reference points from which this corner position can be recovered.
	<p>At the proportionate point for the corner,</p> <p>Set an iron post, 2 ins. diam., 30 ins. long, 26 ins. in the ground, with brass cap mkd.</p>

Dependent Resurvey of a Portion of the  
North Boundary of T. 13 S., R. 66 W.

CHAINS	
	<p>T12S R66W  <math>\frac{1}{4}</math> S 31  S 6  T13S  1966</p> <p>No suitable accessories available.</p> <p>The corner falls in telephone line bearing N. and S., in a filled and landscaped area, 101 lks. W. of railroad track.</p>
13.00	Descend cut bank sloping west.
47.10	Kettle Creek, 15 lks. wide, course SW.
52.00	Top of bank, over nearly level land.
76.20	Center of paved street, bears NE. and SW.
80.54	The corner of Tps. 12 and 13 S., Rs. 66 and 67 W.
Dependent Resurvey of the Boundaries of Secs. 5 and 6, T. 13 S., R. 66 W.	
Reestablishing the Survey Executed by Deputy William Ashley, in 1966.	
<p>The corner of secs. 4, 5, 8 and 9, is marked by an iron bolt, 18 ins. long, set 6 ins. below the surface of Grashio Drive, an improved street in line between Falcon Heights and Columbine Subdivisions. This bolt marks the true position of the original corner of the secs. which was destroyed in street grading operations. The corner position has been recognized for over fifty years.</p> <p>At the corner point,</p> <p>Set an iron post, 2 ins. diam., 30 ins. long, 6 ins. below the surface of Grashio Drive, with brass cap mkd.</p> <p>T13S R66W  <math>\frac{1}{4}</math> S 5 S 4  S 8 S 9  1966</p> <p>from which,</p> <p>An iron post, 2 ins. diam., 30 ins. long, set 26 ins. in the ground for a reference monument, bears East, 47 lks. dist. The brass cap is marked T13S R66W RM 31.0 FT and an arrow pointing toward the corner.</p> <p>An iron post, 2 ins. diam., 30 ins. long, set 26 ins. in the ground, for a reference monument bears West, 47 lks. dist. The brass cap is marked T13S R66W RM 31.0 FT and an arrow pointing toward the corner.</p> <p>From the corner,</p> <p>N. 0° 01' W., between secs. 4 and 5.</p>	

Dependent Resurvey of the Boundaries of  
Secs. 5 and 6, T. 13 S., R. 66 W.

CHAINS	
	<p>Along center of Grashio Road.</p>
21.73	End of Grashio Drive, leave road: wire fence bears E. and W., continue over grassy land.
40.02	<p>The <math>\frac{1}{4}</math> sec. cor. of secs. 4 and 5, marked by the original monument, a conglomerate stone, 15x10x4 ins., firmly set 12 ins. in the ground, marked <math>\frac{1}{4}</math> on W. face.</p> <p>At the corner point,</p> <p>Set an iron post, 2 ins. diam., 30 ins. long, 27 ins. in the ground, with brass cap mkd.</p> <p>T13S R66W  <math>\frac{1}{4}</math> S 5 S 4  1966</p> <p>Bury the old stone in hole at base of post. Corner falls in field; accessories impractical.</p>
N. 0° 01' W., beginning new measurement.	
Over grass land, sloping gradually SW.	
21.25	Center old road, bears NE. and SW.
24.00	Top of small hill, descend westerly slope.
36.83	Spring branch, dry, course SW., sec. gradual SW. slope.
39.81	The corner of secs. 4, 5, 32 and 33, on the north boundary of the township.
From the corner of secs. 4, 5, 8 and 9.	
S. 89° 32' W., between secs. 5 and 8.	
Over nearly level land, between residential subdivisions, through surveyed and marked building sites.	
22.78	Center of Academy Boulevard, a paved highway, bears N. 15° W. to Air Force Academy and Highway I-25 and S. 15° E. to Colorado Springs.
40.11	<p>The <math>\frac{1}{4}</math> sec. cor. of secs. 5 and 8, marked by the original monument, a conglomerate stone, 17x12x4 ins., firmly set 14 ins. in the ground, marked <math>\frac{1}{4}</math> on N. face.</p> <p>At the corner point,</p> <p>Set an iron post, 2 ins. diam., 30 ins. long, 27 ins. in the ground, with brass cap mkd.</p> <p>T13S R66W  <math>\frac{1}{4}</math> S 5  S 8  1966</p> <p>Bury the old stone at base of iron post.</p> <p>Corner falls in area subdivided for home sites, accessories impractical.</p>





## CERTIFICATE OF SURVEY

I, Leonard W. Murphy, Cadastral Surveyor, HEREBY CERTIFY upon honor that,  
in pursuance of special instructions bearing date of the 23rd day of March, 1966,  
I have made a dependent resurvey of the boundaries and partial subdivision  
of sections 5 and 6, T. 13 S., R. 66 W.,

of the Sixth Principal Meridian, in the State of Colorado, which  
are represented in the foregoing field notes as having been executed by me and under my direction;  
and that said survey has been made in strict conformity with said special instructions, the Manual  
of Instructions for the Survey of the Public Lands of the United States, and in specific manner  
described in the foregoing field notes.

May 17, 1966  
(Date)

*Leonard W. Murphy*  
(Cadastral Surveyor)  
Leonard W. Murphy

(Date)

(Cadastral Surveyor)

## CERTIFICATE OF APPROVAL

SUBMITTED FOR APPROVAL  
Date MAY 23 1966

BUREAU OF LAND MANAGEMENT,  
Washington, D. C.

The foregoing field notes of the dependent resurveys and partial subdivision  
of sections 5 and 6, T. 13 S., R. 66 W.,

executed by Leonard W. Murphy, Cadastral Surveyor  
having been critically examined and found correct, are hereby approved.

JUN 13 1966  
(Date)

*[Signature]*  
(Chief, Division of Engineering)

## CERTIFICATE OF TRANSCRIPT

I CERTIFY That the foregoing transcript of the field notes of the above-described surveys in  
is a true copy of the original field notes.

(Date)

(Chief, Division of Engineering)

ORIGINAL

Form 9180-6  
(April 1965)  
(Summary 4-679)

UNITED STATES  
DEPARTMENT OF THE INTERIOR  
BUREAU OF LAND MANAGEMENT

## FIELD NOTES

DEPENDENT RESURVEY

OF

A PORTION OF THE

SUBDIVISIONAL LINES

AND

A SURVEY OF

PARTIAL SUBDIVISION OF

SECTION 21, TRACT 37

TOWNSHIP 5 SOUTH, RANGE 77 WEST

Of the SIXTH PRINCIPAL Meridian,

In the State of COLORADO

EXECUTED BY

JAMES P. SCOTT, CADASTRAL SURVEYOR

Under special instructions dated May 16, 1966, which provided for the surveys  
Supplemental Instructions May 25, 1966  
included under Group Number 531, approved May 18, 1966  
Supplemental Instructions - May 25, 1966  
and assignment instructions dated May 18, 1966.

Survey commenced May 20, 1966

Survey completed June 3, 1966

570

## CERTIFICATE OF SURVEY

I, Frank W. Rogers, HEREBY CERTIFY upon honor that,  
in pursuance of special instructions bearing date of the 5th day of October, 1966,  
I have dependently resurveyed portions of the north and south boundaries  
and subdivisional lines and surveyed a subdivision of certain sections in  
Township 12 South, Range 67 West,

of the Sixth Principal Meridian, in the State of Colorado, which  
are represented in the foregoing field notes as having been executed by me and under my direction;  
and that said survey has been made in strict conformity with said special instructions, the Manual  
of Instructions for the Survey of the Public Lands of the United States, and in specific manner  
described in the foregoing field notes.

August 11, 1967  
(Date)

*Frank W. Rogers*  
(Cadastral Surveyor)  
Frank W. Rogers

(Date)

(Cadastral Surveyor)

## CERTIFICATE OF APPROVAL

SUBMITTED FOR APPROVAL  
Date AUG 15 1967

BUREAU OF LAND MANAGEMENT,  
Washington, D. C.

The foregoing field notes of the dependent resurvey of portions of the north and  
south boundaries and subdivisional lines and a survey of subdivision of  
certain sections in Township 12 South, Range 67 West, Sixth Principal  
Meridian, Colorado

executed by Frank W. Rogers

having been critically examined and found correct, are hereby approved.

NOV 1 1967  
(Date)

*R. L. Brown*  
Acting (Chief, Division of Engineering)

## CERTIFICATE OF TRANSCRIPT

I CERTIFY That the foregoing transcript of the field notes of the above-described surveys in  
, is a true copy of the original field notes.

(Date)

(Chief, Division of Engineering)

Form 9180-6  
(April 1965)  
(formerly 4-679)

ORIGINAL  
UNITED STATES  
DEPARTMENT OF THE INTERIOR  
BUREAU OF LAND MANAGEMENT

571

## FIELD NOTES

OF THE

DEPENDENT RESURVEY OF

THE WEST BOUNDARY, PORTIONS OF THE

NORTH BOUNDARY AND SUBDIVISIONAL LINES

AND A SURVEY OF SUBDIVISION OF CERTAIN SECTIONS

IN TOWNSHIP 12 SOUTH, RANGE 66 WEST

Of the SIXTH PRINCIPAL Meridian,  
In the State of COLORADO

## EXECUTED BY

FRANK W. ROGERS

CADASTRAL SURVEYOR

Under special instructions dated October 5, 1966, which provided for the surveys  
included under Group Number 540-5, approved October 11, 1966,  
and assignment instructions dated October 11, 1966.

Survey commenced October 11, 1966

Survey completed December 12, 1966

## INDEX DIAGRAM

Township 12 South, Range 66 West

5					
4	15	14	•	•	•
	15				1
4	14				
4	15	13	•	•	10
	15				
3	13				
	16	12	17	18	19
	16				
12	11				
3	10	11	16	7	21
	10		15		22
		10			23
2	9	9	7	20	25
	9				
1	8	8	6	24	26

GPO 545-505

Township 12 South, Range 66 West  
Sixth Principal Meridian, Colorado

## CHAINS

The following field notes are those of a dependent resurvey of the west boundary, portions of the north boundary and subdivisional lines and a survey of subdivision of certain sections, in Township 12 South, Range 66 West, Sixth Principal Meridian, Colorado.

## History of Surveys

## Original Surveys

Township lines	A.Z. Sheldon	1865
Subdivisional lines	Wm. Ashley	1866

## Resurveys

Portion of South boundary	Leonard W. Murphy	1966
---------------------------	-------------------	------

Preliminary to the resurvey the lines of the original survey were retraced and a diligent search made for any evidence of the original corner positions. In the intervening years since the original survey, some of the corners have been remonumented with durable materials by county and private surveyors. These corner monuments are locally accepted as the true point for the corner positions. In cases where physical evidence of the corner monument could not be found, improvements, such as section line roads and fences constructed before the original corner evidence was destroyed, were used to determine the corner position. Missing corners were re-established according to the rules of proportionate measurement.

The resurvey was executed in accordance with the specifications set forth in the Manual of Surveying Instructions, 1947, and the special instructions dated October 5, 1966. The directions of all lines were determined by ties to U.S. Coast & Geodetic triangulation station, "Pine Valley Airport", located in section 30 of this township. All lines refer to the true meridian. The adjusted horizontal distances, only, are entered in this field note record. For topography, see U.S. Geological Survey quadrangles "Monument" and "Pikeview".

The geographic position of the cor. of sections 4, 5, 32 and 33 on the S. boundary of the township as derived by traverse tie from "Pine Valley Airport" is:

Latitude 38° 57' 17" N.  
Longitude 104° 47' 36" W.

The observed magnetic declination was 14° E.

Dependent Resurvey of the West Boundary of  
Township 12 South, Range 66 West  
Sixth Principal Meridian, Colorado

CHAINS	
	<p>Re-establishment of the Survey Executed by A.Z. Sheldon, in 1865</p>
40.40	<p>Beginning at the cor. of Tps. 12 and 13 S., Rs. 66 and 67 W., monumented with an iron post, 2½ ins. diam., as described in the official record of the dependent resurvey of a portion of the N. boundary of T. 13 S., R. 66 W., executed in 1966,</p> <p>N. 0° 01' E., between secs. 31 and 36.</p> <p>Over level land.</p> <p>Point for the ¼ sec. cor. of secs. 31 and 36 at proportionate distance. There is no evidence of the original corner monument.</p> <p>Set an iron post, 30 ins. long, 2½ ins. diam., 25 ins. in the ground, with brass cap mkd.</p> <p style="text-align: center;">T12S R67W R66W + S36 S31 1966</p> <p>Continue measurement over level land.</p> <p>80.80 The cor. of secs. 25, 30, 31 and 36 monumented with a galvanized iron pipe, 2½ ins. diam., firmly set, locally accepted as the corner.</p> <p>At the corner point</p> <p>Set an iron post, 30 ins. long, 2½ ins. diam., 24 ins. in the ground, with brass cap mkd.</p> <p style="text-align: center;">T12S R67W R66W S25 S30 S36 S31 1966</p> <p>bury the galvanized pipe alongside the iron post and build a mound of stone, 2 ft. base, 1½ ft. high, W. of the corner.</p> <p>N. 0° 05' E., between secs. 25 and 30.</p> <p>Over gently rolling land.</p> <p>40.21 Point for the ¼ sec. cor. of secs. 25 and 30 at proportionate distance. There is no evidence of the original corner monument.</p> <p>Set an iron post, 30 ins. long, 2½ ins. diam., 24 ins. in the ground, with brass cap mkd.</p> <p style="text-align: center;">T12S R67W R66W + S25 S30 1966</p>

Dependent Resurvey of the West Boundary of  
Township 12 South, Range 66 West  
Sixth Principal Meridian, Colorado

CHAINS	
	<p>Continue measurement over gently rolling land.</p>
80.42	<p>Point for the cor. of secs. 19, 24, 25 and 30 at proportionate distance. There is no evidence of the original corner monument.</p> <p>Set an iron post, 30 ins. long, 2½ ins. diam., flush with the surface of the ground, with brass cap mkd.</p> <p style="text-align: center;">T12S R67W R66W S24 S19 S25 S30 1966</p> <p>The corner is located 50 lks. W. of two round sewer disposal settling tanks.</p> <p>N. 0° 05' E., between secs. 19 and 24.</p> <p>Over rolling land.</p>
40.21	<p>Point for the ¼ sec. cor. of secs. 19 and 24 at proportionate distance. There is no evidence of the original corner monument.</p> <p>Set an iron post, 30 ins. long, 2½ ins. diam., 24 ins. in the ground, with brass cap mkd.</p> <p style="text-align: center;">T12S R67W R66W + S24 S19 1966</p> <p>Continue measurement over rolling land.</p>
80.42	<p>Point for the cor. of secs. 13, 18, 19 and 24 at proportionate distance. There is no evidence of the original corner monument.</p> <p>Set an iron post, 30 ins. long, 2½ ins. diam., 20 ins. in the ground in a mound of stone, with brass cap mkd.</p> <p style="text-align: center;">T12S R67W R66W S13 S18 S24 S19 1966</p> <p>N. 0° 05' E., between secs. 13 and 18.</p> <p>Over rolling land.</p>
40.21	<p>Point for the ¼ sec. cor. of secs. 13 and 18 at proportionate distance. There is no evidence of the original corner monument.</p> <p>Set an iron post, 30 ins. long, 2½ ins. diam., 24 ins. in the ground, with brass cap mkd.</p> <p style="text-align: center;">T12S R67W R66W + S13 S18 1966</p>

Dependent Resurvey of the West Boundary of  
Township 12 South, Range 66 West  
Sixth Principal Meridian, Colorado

CHAINS	
	Continue measurement over rolling land.
80.42	Point for the cor. of secs. 7, 12, 13 and 18 at proportionate distance. There is no evidence of the original corner monument.  Set an iron post, 30 ins. long, 2½ ins. diam., 23 ins. in the ground, with brass cap mkd.  <div style="text-align: center;"> T12S R67W R66W S12 S7 S13 S18 1966 </div>
	build a mound of stone, 2 ft. base, 1½ ft. high, W. of the iron post.
	N. 0° 05' E., between secs. 7 and 12.  Over gently rolling land.
40.21	Point for the ¼ sec. cor. of secs. 7 and 12 at proportionate distance. There is no evidence of the original corner monument.  Set an iron post, 30 ins. long, 2½ ins. diam., 24 ins. in the ground, with brass cap mkd.  <div style="text-align: center;"> T12S R67W R66W S12 S7 1966 </div>
	Corner is located in median of Interstate 25.  Continue measurement over gently rolling land.
80.42	Point for the cor. of secs. 1, 6, 7 and 12 at proportionate distance. There is no evidence of the original corner monument.  Set an iron post, 30 ins. long, 2½ ins. diam., 24 ins. in the ground, with brass cap mkd.  <div style="text-align: center;"> T12S R67W R66W S1 S6 S12 S7 1966 </div>
	Corner is located approximately 10 chs. E. of Interstate 25 and is in N. entrance complex to the Air Force Academy.
	N. 0° 05' E., between secs. 1 and 6.  Over gently rolling land.
40.21	The ¼ sec. cor. of secs. 1 and 6 determined at the corner of fences bearing N., S. and W.  At the corner point

Dependent Resurvey of the West Boundary of  
Township 12 South, Range 66 West  
Sixth Principal Meridian, Colorado

CHAINS	
	Set an iron post, 30 ins. long, 2½ ins. diam., 22 ins. in the ground, with brass cap mkd.  <div style="text-align: center;"> T12S R67W R66W S1 S6 1966 </div>
	N. 0° 11' E., beginning new measurement.  Over gently rolling land.
40.14	The cor. of Tps. 11 and 12 S., Rs. 66 and 67 W., monumented with an iron post, 3 ins. diam., as described in the official record of the remonumentation executed in 1934.
	Dependent Resurvey of a Portion of the North Boundary Township 12 South, Range 66 West Sixth Principal Meridian, Colorado
	Re-establishment of the Survey Executed by A.Z. Sheldon, in 1865
	The cor. of secs. 5, 6, 31 and 32 monumented with a stone, 12x8x5 ins., mkd. with 5 notches on the E. edge and 1 notch on the W. edge, firmly set in fence line bearing E. and W.  At the corner point  Set an iron post, 30 ins. long, 2½ ins. diam., 24 ins. in the ground, with brass cap mkd.  <div style="text-align: center;"> T11S R66W S31 S32 S6 S5 T12S 1966 </div>
	bury the stone alongside the iron post.  N. 89° 51' W., between secs. 6 and 31.  Over gently rolling land, along fence line.
40.06	Point for the ¼ sec. cor. of secs. 6 and 31 at proportionate distance. There is no evidence of the original corner monument.  Set an iron post, 30 ins. long, 2½ ins. diam., 23 ins. in the ground, with brass cap mkd.  <div style="text-align: center;"> T11S R66W S31 S6 T12S 1966 </div>
	Corner is located in fence line bearing E. and W.

Dependent Resurvey of a Portion of the North Boundary  
Township 12 South, Range 66 West  
Sixth Principal Meridian, Colorado

CHAINS	
78.04	<p>Continue measurement over gently rolling land.</p> <p>The cor. of Tps. 11 and 12 S., Rs. 66 and 67 W.</p>
	<p>Dependent Resurvey of a Portion of the Subdivisional Lines Township 12 South, Range 66 West Sixth Principal Meridian, Colorado</p>
	<p>Re-establishment of the Survey Executed by Wm. Ashley, in 1866</p>
	<p>From the cor. of secs. 4, 5, 32 and 33 on the S. boundary of the township, monumented with an iron post, 2½ ins. diam., as described in the official record of the depen- dent resurvey of a portion of the N. boundary of T. 13 S., R. 66 W., executed in 1966,</p>
	<p>N. 0° 05' E., between secs. 32 and 33.</p>
	<p>Over gently rolling land.</p>
40.12	<p>The ¼ sec. cor. of secs. 32 and 33, monumented with an iron pipe, 2 ins. diam., firmly set, locally accepted as the corner.</p>
	<p>At the corner point</p>
	<p>Set an iron post, 30 ins. long, 2½ ins. diam., 24 ins. in the ground, surrounded by two automobile tires, with brass cap mhd.</p>
	<p style="text-align: center;">T12S R66W ↓ S32 S33 1966</p>
	<p>bury the iron pipe alongside the iron post.</p>
	<p>N. 0° 05' E., beginning new measurement.</p>
	<p>Over gently rolling land.</p>
40.13	<p>The cor. of secs. 28, 29, 32 and 33, monumented with a conglomerate stone, 4x10x14, unmarked, with an iron pin alongside, firmly set in a fence line bearing E. and W.</p>
	<p>At the corner point</p>
	<p>Set an iron post, 30 ins. long, 2½ ins. diam., 22 ins. in the ground, with brass cap mhd.</p>
	<p style="text-align: center;">T12S R66W S29 S28 S32 S33 1966</p>
	<p>set the stone and pin alongside the iron post.</p>

Dependent Resurvey of a Portion  
of the Subdivisional Lines  
Township 12 South, Range 66 West  
Sixth Principal Meridian, Colorado

CHAINS	
	<p>N. 0° 15' E., between secs. 28 and 29.</p>
	<p>Over gently rolling land.</p>
39.92	<p>Point for the ¼ sec. cor. of secs. 28 and 29 at propor- tionate distance. There is no evidence of the original corner monument.</p>
	<p>Set an iron post, 30 ins. long, 2½ ins. diam., 24 ins. in the ground, with brass cap mhd.</p>
	<p style="text-align: center;">T12S R66W ↓ S29 S28 1966</p>
	<p>Continue measurement over gently rolling land.</p>
79.84	<p>The cor. of secs. 20, 21, 28 and 29 monumented with an iron pipe, 1 in. diam., firmly set, locally accepted as the corner.</p>
	<p>At the corner point</p>
	<p>Set an iron post, 30 ins. long, 2½ ins. diam., 22 ins. in the ground, with brass cap mhd.</p>
	<p style="text-align: center;">T12S R66W S20 S21 S29 S28 1966</p>
	<p>bury the iron pipe alongside the iron post.</p>
	<p>N. 0° 24' E., between secs. 20 and 21.</p>
	<p>Over gently rolling land.</p>
39.95	<p>Point for the ¼ sec. cor. of secs. 20 and 21 at propor- tionate distance. There is no evidence of the original corner monument.</p>
	<p>Set an iron post, 30 ins. long, 2½ ins. diam., 24 ins. in the ground, with brass cap mhd.</p>
	<p style="text-align: center;">T12S R66W ↓ S20 S21 1966</p>
	<p>Corner is located on projection of road bearing W.</p>
	<p>Continue measurement over gently rolling land.</p>
79.90	<p>The cor. of secs. 16, 17, 20 and 21 monumented with an iron pipe, 1 in. diam., set flush with the surface of the ground, with the remains of a wooden post alongside, locally accepted as the corner.</p>
	<p>At the corner point</p>
	<p>Set an iron post, 30 ins. long, 2½ ins. diam., 24 ins. in the ground, with brass cap mhd.</p>



Dependent Resurvey of a Portion  
of the Subdivisional Lines  
Township 12 South, Range 66 West  
Sixth Principal Meridian, Colorado

CHAINS	
	<p>T12S R66W S17/S16 S20/S21 1966</p> <p>bury the iron pipe and the remains of the wooden post alongside the iron post.</p>
40.07	<p>From the cor. of secs. 5, 6, 31 and 32 on the S. boundary of the township, monumented with steel spike, as described in the official record of the dependent resurvey of a portion of the N. boundary of T. 13 S., R. 66 W., executed in 1966,</p> <p>N. 0° 09' E., between secs. 31 and 32.</p> <p>Over gently rolling land, along a light-duty road.</p> <p>Point for the <math>\frac{1}{4}</math> sec. cor. of secs. 31 and 32, at proportionate distance. There is no evidence of the original corner monument.</p> <p>Set a spike, 8 ins. long, flush with the surface of the road.</p> <p>from which</p> <p>An iron post, 30 ins. long, <math>2\frac{1}{2}</math> ins. diam., set 24 ins. in the ground, for a reference monument, bears S. <math>45\frac{1}{2}</math>° W., 45.3 ft. dist., with brass cap mkd. T12S R66W RM S31 45.3 FT 1966 and an arrow pointing to the true corner.</p> <p>An iron post, 30 ins. long, <math>2\frac{1}{2}</math> ins. diam., set 24 ins. in the ground, for a reference monument, bears N. <math>46\frac{1}{2}</math>° W., 67.0 ft. dist., with brass cap mkd. T12S R66W RM S31 67.0 FT 1966 and an arrow pointing to the true corner.</p> <p>Continue measurement over gently rolling land.</p> <p>80.14 Point for the cor. of secs. 29, 30, 31 and 32 at proportionate distance. There is no evidence of the original corner monument.</p> <p>Set a brass tablet, flush with the surface of the road, mkd.</p> <p>T12S R66W S30/S29 S31/S32 1966</p> <p>from which</p> <p>An iron post, 30 ins. long, <math>2\frac{1}{2}</math> ins. diam., set 24 ins. in the ground, for a reference monument, bears S. 41° W., 42.0 ft. dist., with brass cap mkd. T12S R66W RM S31 42.0 FT 1966 and an arrow pointing to the true corner.</p> <p>An iron post, 30 ins. long, <math>2\frac{1}{2}</math> ins. diam., set 24 ins. in the ground, for a reference monument, bears N. <math>35\frac{1}{2}</math>° W., 47.3 ft. dist., with brass cap mkd.</p>

Dependent Resurvey of a Portion  
of the Subdivisional Lines  
Township 12 South, Range 66 West  
Sixth Principal Meridian, Colorado

CHAINS	
	<p>T12S R66W RM S30 47.3 FT 1966 and an arrow pointing to the true corner.</p> <p>U.S. Coast and Geodetic Survey triangulation station "Pine Valley Airport", a standard bronze tablet set in concrete, bears N. 42° 42' W., 2.89 chs.</p> <p>Corner is located in W. lane of old U.S. Highway 87.</p>
40.19	<p>From the cor. of secs. 28, 29, 32 and 33,</p> <p>N. 89° 56' W., between secs. 29 and 32.</p> <p>Over level land.</p> <p>Point for the <math>\frac{1}{4}</math> sec. cor. of secs. 29 and 32 at proportionate distance. There is no evidence of the original corner monument.</p> <p>Set an iron post, 30 ins. long, <math>2\frac{1}{2}</math> ins. diam., 22 ins. in the ground, with brass cap mkd.</p> <p>T12S R66W S29 S32 1966</p> <p>Continue measurement over level land.</p> <p>80.38 The cor. of secs. 29, 30, 31 and 32.</p>
39.99	<p>WEST, between secs. 30 and 31.</p> <p>Over gently rolling land.</p> <p>Point for the <math>\frac{1}{4}</math> sec. cor. of secs. 30 and 31 at proportionate distance. There is no evidence of the original corner monument.</p> <p>Set an iron post, 30 ins. long, <math>2\frac{1}{2}</math> ins. diam., 25 ins. in the ground, with brass cap mkd.</p> <p>T12S R66W S30 S31 1966</p> <p>Continue measurement over level land.</p> <p>80.58 The cor. of secs. 25, 30, 31 and 36 on the W. boundary of the township.</p>
40.07	<p>From the cor. of secs. 29, 30, 31 and 32,</p> <p>N. 0° 14' E., between secs. 29 and 30.</p> <p>Over level land.</p> <p>Point for the <math>\frac{1}{4}</math> sec. cor. of secs. 29 and 30 at proportionate distance. There is no evidence of the original corner monument.</p>

Dependent Resurvey of a Portion  
of the Subdivisional Lines  
Township 12 South, Range 66 West  
Sixth Principal Meridian, Colorado

CHAINS	
	Set a spike 8 ins. long, flush with the surface of the road.  from which  An iron post, 30 ins. long, $2\frac{1}{2}$ ins. diam., set 24 ins. in the ground, for a reference monument, bears S. $43^\circ$ W., 32.0 ft. dist., with brass cap mkd. T128 R66W RM S30 32.0 FT 1966 and an arrow pointing to the true corner.  An iron post, 30 ins. long, $2\frac{1}{2}$ ins. diam., set 24 ins. in the ground, for a reference monument, bears N. $45\frac{1}{2}^\circ$ W., 30.0 ft. dist., with brass cap mkd. T128 R66W RM S30 30.0 FT 1966 and an arrow pointing to the true corner.  Corner is located in W. lane of old U.S. Highway 87.  Continue measurement over level land.
80.14	Point for the cor. of secs. 19, 20, 29 and 30 at proportionate distance. There is no evidence of the original corner monument.  Set an iron post, 30 ins. long, $2\frac{1}{2}$ ins. diam., 29 ins. in the ground, with brass cap mkd.  T128 R66W S19/S20 S30/S29 1966  Corner is located on W. edge of Interstate 25.
	From the cor. of secs. 20, 21, 28 and 29,  N. $89^\circ 43'$ W., between secs. 20 and 29.  Over gently rolling land.
40.21	Point for the $\frac{1}{4}$ sec. cor. of secs. 20 and 29 at proportionate distance. There is no evidence of the original corner monument.  Set an iron post, 30 ins. long, $2\frac{1}{2}$ ins. diam., 25 ins. in the ground, with brass cap mkd.  T128 R66W S20 S29 1966  Continue measurement over gently rolling land.
30.42	The cor. of secs. 19, 20, 29 and 30.  N. $89^\circ 49'$ W., between secs. 19 and 30.  Over gently rolling land.
40.13	Point for the $\frac{1}{4}$ sec. cor. of secs. 19 and 30 at proportionate distance. There is no evidence of the original corner monument.

Dependent Resurvey of a Portion  
of the Subdivisional Lines  
Township 12 South, Range 66 West  
Sixth Principal Meridian, Colorado

CHAINS	
	Set an iron post, 30 ins. long, $2\frac{1}{2}$ ins. diam., 24 ins. in the ground, with brass cap mkd.  T128 R66W S19 S30 1966  Continue measurement over rolling land.
80.74	The cor. of secs. 19, 24, 25 and 30 on the W. boundary of the township.  From the cor. of secs. 19, 20, 29 and 30,  N. $0^\circ 10'$ E., between secs. 19 and 20.  Over gently rolling land.
40.07	Point for the $\frac{1}{4}$ sec. cor. of secs. 19 and 20 at proportionate distance. There is no evidence of the original corner monument.  Set an iron post, 30 ins. long, $2\frac{1}{2}$ ins. diam., 25 ins. in the ground, with brass cap mkd.  T128 R66W S19/S20 1966  Corner is located on E. edge of road bearing N. and S., and on projection of road bearing W.  Continue measurement over gently rolling land.
80.14	Point for the cor. of secs. 17, 18, 19 and 20 at proportionate distance. There is no evidence of the original corner monument.  Set an iron post, 30 ins. long, $2\frac{1}{2}$ ins. diam., set 24 ins. in the ground, with brass cap mkd.  T128 R66W S18/S17 S19/S20 1966  from which  An Air Force Academy marker, a standard brass tablet set in concrete, mkd. B 19, bears S. $28^\circ 35'$ W., 30 lks. dist.
	From the cor. of secs. 16, 17, 20 and 21,  N. $89^\circ 33'$ W., between secs. 17 and 20.  Over gently rolling land.
40.38	True point for the $\frac{1}{4}$ sec. cor. of secs. 17 and 20 at proportionate distance, falls in pond. There is no evidence of the original corner monument.

Dependent Resurvey of a Portion  
of the Subdivisional Lines  
Township 12 South, Range 66 West  
Sixth Principal Meridian, Colorado

CHAINS	
41.08	Selected point for the witness $\frac{1}{4}$ sec. cor. of secs. 17 and 20.  Set an iron post, 30 ins. long, $2\frac{1}{2}$ ins. diam., 25 ins. in the ground, with brass cap mkd.  T12S R66W $\frac{1}{4}$ S17 S20 1966
80.76	The cor. of secs. 17, 18, 19 and 20.  N. 89° 38' W., between secs. 18 and 19.  Over gently rolling land.
40.29	Point for the $\frac{1}{4}$ sec. cor. of secs. 18 and 19 at proportionate distance. There is no evidence of the original corner monument.  Set an iron post, 30 ins. long, $2\frac{1}{2}$ ins. diam., 24 ins. in the ground, with brass cap mkd.  T12S R66W $\frac{1}{4}$ S18 S19 1966  Corner is located in head of small draw draining S.  Continue measurement over gently rolling land.
80.88	The cor. of secs. 13, 18, 19 and 24 on the W. boundary of the township.  From the cor. of secs. 17, 18, 19 and 20,  N. 0° 04' W., between secs. 17 and 18.  Over gently rolling land.
40.07	Point for the $\frac{1}{4}$ sec. cor. of secs. 17 and 18 at proportionate distance. There is no evidence of the original corner monument.  Set an iron post, 30 ins. long, $2\frac{1}{2}$ ins. diam., 26 ins. in the ground, with brass cap mkd.  T12S R66W $\frac{1}{4}$ S18 S17 1966  Corner is located on W. edge of road bearing N. and S.  Continue measurement over gently rolling land.
80.14	The cor. of secs. 7, 8, 17 and 18 determined at the intersection of center line of road bearing N. and S. and fence line bearing E. and W.  At the corner point

Dependent Resurvey of a Portion  
of the Subdivisional Lines  
Township 12 South, Range 66 West  
Sixth Principal Meridian, Colorado

CHAINS	
	Set an iron post, 30 ins. long, $2\frac{1}{2}$ ins. diam., 22 ins. in the ground, with brass cap mkd.  T12S R66W S7/S8 S18/S17 1966  Corner is located in the center of a cattle guard in the road.
	N. 89° 26' W., between secs. 7 and 18.  Over rolling land.
40.51	Point for the $\frac{1}{4}$ sec. cor. of secs. 7 and 18 at proportionate distance. There is no evidence of the original corner monument.  Set an iron post, 30 ins. long, $2\frac{1}{2}$ ins. diam., 24 ins. in the ground, with brass cap mkd.  T12S R66W $\frac{1}{4}$ S7 S18 1966  Corner is located 10 lks. E. of Air Force Academy fence line bearing N. and S.  Continue measurement over rolling land.
80.71	The cor. of secs. 7, 12, 13 and 18 on the W. boundary of the township.  From the cor. of secs. 7, 8, 17 and 18,  N. 0° 39' W., between secs. 7 and 8.  Over rolling land.
40.06	Point for the $\frac{1}{4}$ sec. cor. of secs. 7 and 8 at proportionate distance. There is no evidence of the original corner monument.  Set a copper-coated steel stake, 30 ins. long, $\frac{1}{2}$ in. diam., 10 ins. below the surface of the road, with brass cap, $1\frac{1}{2}$ ins. diam., mkd.  $\frac{1}{4}$ S7/S8 1966  from which  An iron post, 30 ins. long, $2\frac{1}{2}$ ins. diam., set 24 ins. in the ground, for a reference monument, bears S. $41\frac{1}{2}$ ° W., 44.0 ft. dist., with brass cap mkd. T12S R66W RM S7 44.0 FT 1966 and an arrow pointing to the true corner.  An iron post, 30 ins. long, $2\frac{1}{2}$ ins. diam., set 24 ins. in the ground, for a reference monument, bears N. 58° W., 30.7 ft. dist., with brass cap mkd.

Dependent Resurvey of a Portion  
of the Subdivisional Lines  
Township 12 South, Range 66 West  
Sixth Principal Meridian, Colorado

CHAINS	
	T12S R66W RM S7 30.7 FT 1966 and an arrow pointing to the true corner.
	Corner is located in road bearing N. and S.
	Continue measurement over rolling land.
80.12	The cor. of secs. 5, 6, 7 and 8, monumented with a conglomerate stone, 1 1/2 x 1 1/2 x 4 ins., unmarked, firmly set at the corner of fence lines bearing E., W. and N.
	At the corner point
	Set an iron post, 30 ins. long, 2 1/2 ins. diam., 28 ins. in the ground, with brass cap mkd.
	T12S R66W 86   S5 87   S8 1966
	bury the stone alongside the iron post.
	N. 89° 13' W., between secs. 6 and 7.
	Over rolling land.
40.25	Point for the 1/4 sec. cor. of secs. 6 and 7 at proportionate distance. There is no evidence of the original corner monument.
	Set an iron post, 30 ins. long, 2 1/2 ins. diam., flush with the surface of the ground, with brass cap mkd.
	T12S R66W 1/4   86 1/4   87 1966
	Continue measurement over rolling land.
79.70	The cor. of secs. 1, 6, 7 and 12 on the W. boundary of the township.
	From the cor. of secs. 5, 6, 7 and 8,
	N. 1° 02' W., between secs. 5 and 6.
	Over rolling land.
40.16	The 1/4 sec. cor. of secs. 5 and 6, monumented with an iron pipe, 1 in. diam., firmly set, locally accepted as the corner.
	At the corner point
	Set an iron post, 30 ins. long, 2 1/2 ins. diam., 24 ins. in the ground, with brass cap mkd.
	T12S R66W 86   S5 1966
	bury the iron pipe alongside the iron post.

Dependent Resurvey of a Portion  
of the Subdivisional Lines  
Township 12 South, Range 66 West  
Sixth Principal Meridian, Colorado

CHAINS	
	N. 1° 02' W., beginning new measurement.
	Continue over rolling land.
41.08	The cor. of secs. 5, 6, 31 and 32 on the N. boundary of the township.
	Subdivision of Certain Sections Township 12 South, Range 66 West Sixth Principal Meridian, Colorado
	In Section 6
	From the 1/4 sec. cor. of secs. 6 and 7,
	N. 0° 54' W., on the meridional center line of sec. 6.
40.19	Point for the C 1/4 sec. cor. of sec. 6, at the intersection with the latitudinal center line.
	Set an iron post, 30 ins. long, 2 1/2 ins. diam., 24 ins. in the ground, with brass cap mkd.
	T12S R66W C 1/4 86 1966
80.80	The 1/4 sec. cor. of secs. 6 and 31 on the N. boundary of the township.
	From the 1/4 sec. cor. of secs. 5 and 6,
	N. 89° 10' W., on the latitudinal center line of sec. 6.
40.16	The C 1/4 sec. cor. of sec. 6.
78.91	The 1/4 sec. cor. of secs. 1 and 6 on the W. boundary of the township.
	In Section 7
	From the 1/4 sec. cor. of secs. 7 and 18,
	N. 0° 27' W., on the meridional center line of sec. 7.
40.13	Point for the C 1/4 sec. cor. of sec. 7 at the intersection with the latitudinal center line.
	Set an iron post, 30 ins. long, 2 1/2 ins. diam., 24 ins. in the ground, with brass cap mkd.
	T12S R66W C 1/4 87 1966
80.27	The 1/4 sec. cor. of secs. 6 and 7.
	From the 1/4 sec. cor. of secs. 7 and 8.
	N. 89° 20' W., on the latitudinal center line of sec. 7.
40.38	The C 1/4 sec. cor. of sec. 7.
80.20	The 1/4 sec. cor. of secs. 7 and 12 on the W. boundary of the township.

Subdivision of Certain Sections  
Township 12 South, Range 66 West  
Sixth Principal Meridian, Colorado

CHAINS	
	<u>In Section 18</u>
	From the $\frac{1}{4}$ sec. cor. of secs. 18 and 19, N. $0^{\circ} 12' W.$ , on the meridional center line.
40.14	Point for the C $\frac{1}{4}$ sec. cor. at the intersection with the latitudinal center line. Set an iron post, 30 ins. long, $2\frac{1}{2}$ ins. diam., 25 ins. in the ground, with brass cap mhd. T128 R66W C $\frac{1}{4}$ 818 1966
80.28	The $\frac{1}{4}$ sec. cor. of secs. 7 and 18.
	From the $\frac{1}{4}$ sec. cor. of secs. 17 and 18, N. $89^{\circ} 32' W.$ , on the latitudinal center line of sec. 18.
40.40	The C $\frac{1}{4}$ sec. cor. of sec. 18.
80.79	The $\frac{1}{4}$ sec. cor. of secs. 13 and 18 on the W. boundary of the township.
	<u>In Section 20</u>
	From the $\frac{1}{4}$ sec. cor. of secs. 20 and 29, N. $0^{\circ} 17' E.$ , on the meridional center line of sec. 20.
40.01	Point for the C $\frac{1}{4}$ sec. cor. of sec. 20 at the intersection with the latitudinal center line. Set an iron post, 30 ins. long, $2\frac{1}{2}$ ins. diam., 24 ins. in the ground, with brass cap mhd. T128 R66W C $\frac{1}{4}$ 820 1966
	Corner is located 10 lks. N. of N. edge of gravel road bearing E. and W.
80.02	The $\frac{1}{4}$ sec. cor. of secs. 17 and 20.
	From the $\frac{1}{4}$ sec. cor. of secs. 20 and 21, N. $89^{\circ} 38' W.$ , on the latitudinal center line of sec. 20.
40.29	The C $\frac{1}{4}$ sec. cor. of sec. 20.
80.58	The $\frac{1}{4}$ sec. cor. of secs. 19 and 20.
	<u>In Section 29</u>
	From the $\frac{1}{4}$ sec. cor. of secs. 29 and 32, N. $0^{\circ} 14' E.$ , on the meridional center line of sec. 29.
39.99	Point for the C $\frac{1}{4}$ sec. cor. of sec. 29, at the intersect- ion with the latitudinal center line. Set an iron post, 30 ins. long, $2\frac{1}{2}$ ins. diam., 24 ins. in the ground, with brass cap mhd.

Subdivision of Certain Sections  
Township 12 South, Range 66 West  
Sixth Principal Meridian, Colorado

CHAINS	
	T128 R66W C $\frac{1}{4}$ 829 1966
79.98	The $\frac{1}{4}$ sec. cor. of secs. 20 and 29.
	From the $\frac{1}{4}$ sec. cor. of secs. 28 and 29, N. $89^{\circ} 50' W.$ , on the latitudinal center line of sec. 29.
40.20	The C $\frac{1}{4}$ sec. cor. of sec. 29.
80.40	The $\frac{1}{4}$ sec. cor. of secs. 29 and 30.





## CERTIFICATE OF SURVEY

I, Frank W. Rogers, HEREBY CERTIFY upon honor that,  
in pursuance of special instructions bearing date of the 5th day of October, 1966,  
I have dependently resurveyed the west boundary, portions of the north  
boundary and subdivisional lines and surveyed a subdivision of certain  
sections in Township 12 South, Range 66 West

of the Sixth Principal Meridian, in the State of Colorado, which  
are represented in the foregoing field notes as having been executed by me and under my direction;  
and that said survey has been made in strict conformity with said special instructions, the Manual  
of Instructions for the Survey of the Public Lands of the United States, and in specific manner  
described in the foregoing field notes.

August 11, 1967  
(Date)

*Frank W. Rogers*  
(Cadastral Surveyor)  
Frank W. Rogers

(Date)

(Cadastral Surveyor)

## CERTIFICATE OF APPROVAL

SUBMITTED FOR APPROVAL  
Date AUG 15 1967

BUREAU OF LAND MANAGEMENT,  
Washington, D. C.

The foregoing field notes of the dependent resurvey of the west boundary, portions  
of the north boundary and subdivisional lines and a survey of subdivision  
of certain sections in Township 12 South, Range 66 West, Sixth Principal  
Meridian, Colorado

executed by Frank W. Rogers

having been critically examined and found correct, are hereby approved.

NOV 1 1967  
(Date)

*R. E. Brown*  
Acting (Chief, Division of Engineering)

## CERTIFICATE OF TRANSCRIPT

I CERTIFY That the foregoing transcript of the field notes of the above-described surveys is  
a true copy of the original field notes.

(Date)

(Chief, Division of Engineering)

ORIGINAL

Form 9180-6  
(April 1965)  
(formerly 4-579)

UNITED STATES  
DEPARTMENT OF THE INTERIOR  
BUREAU OF LAND MANAGEMENT

## FIELD NOTES

OF THE

DEPENDENT SURVEY OF THE

2ND PARALLEL NORTH IN RANGE 75 WEST

AND A PORTION OF THE SUBDIVISIONAL LINES

AND AN INDEPENDENT RESURVEY OF

PORTIONS OF THE EAST BOUNDARY AND SUBDIVISIONAL LINES

AND A SURVEY OF SUBDIVISION

OF CERTAIN SECTIONS AND TRACTS 37 and 38

IN TOWNSHIP 12 NORTH, RANGE 75 WEST

Of the SIXTH PRINCIPAL Meridian,  
in the State of COLORADO

## EXECUTED BY

RICHARD D. SNIDER

CADASTRAL SURVEYOR

Under special instructions dated April 29, 1963, which provided for the surveys  
Amended instructions dated June 20, 1967, April 29, 1963  
inclosed under Group Number 498, approved June 20, 1967,  
and assignment instructions dated April 29, 1963.

Survey commenced May 2, 1963

Survey completed July 25, 1967